



2 Louise Avenue, Netherfield - NG4 2ND

Guide Price £270,000



2 Louise Avenue

Netherfield, Nottingham

GUIDE PRICE £270,000-£280,000. Stylish and fully renovated 3 bed semi-detached with no chain! Stunning open-plan living kitchen, large private rear garden & parking - all in a cul-de-sac setting!

Council Tax band: B

Tenure: Freehold

EPC Energy Efficiency Rating: C

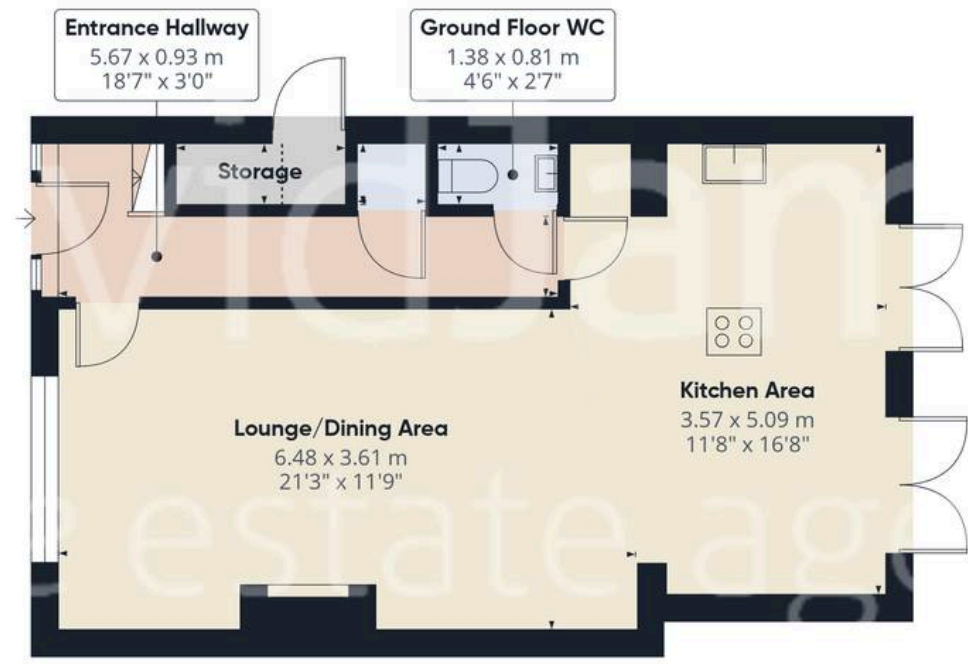
EPC Environmental Impact Rating:

- Stylish and extended semi-detached home in a cul-de-sac location
- Fully renovated by the current owners and beautifully presented throughout
- Perfect for those seeking a ready-made home
- Welcoming entrance hallway with a convenient ground floor WC
- Stunning open-plan living/kitchen with dual aspect windows
- Contemporary kitchen with a feature central island and range of integrated appliances
- Bright first floor hosts three bedrooms (including a flexible nursery or home office)
- Modern family bathroom with rainfall shower, vanity sink and stylish detailing
- Large private rear garden with good-sized paved patio and lawn
- Double width driveway providing off-street parking for two vehicles

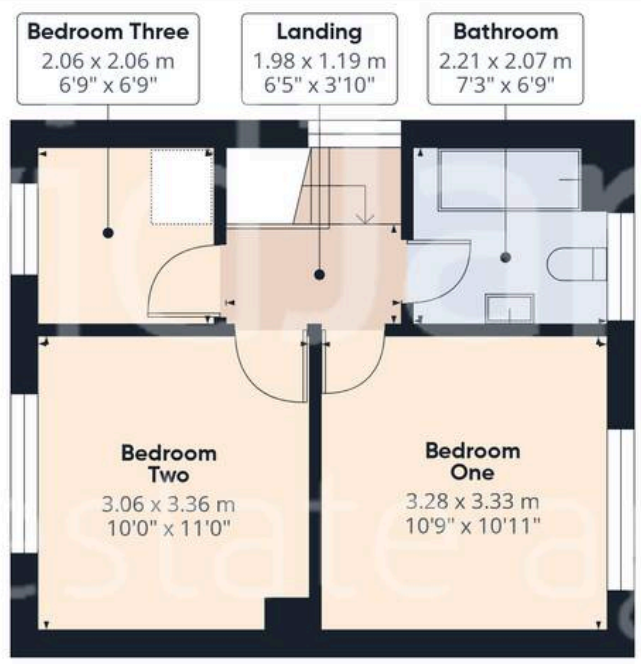








Floor 0



Floor 1



Approximate total area⁽¹⁾
82.1 m ²
883 ft ²
Reduced headroom
0.9 m ²
10 ft ²

(1) Excluding balconies and terraces

Reduced headroom
..... Below 1.5 m/5 ft

Calculations reference the RICS IPMS 3C standard. Measurements are approximate and not to scale. This floor plan is intended for illustration only.

GIRAFFE360



David James Estate Agents

376 Carlton Hill, Carlton - NG4 1JA

0115 987 8957 • carlton@david-james.com • www.david-james.com

These particulars are produced in good faith and are set out as a general guide only. Measurements are approximate and floor plans are for illustrative purposes only. Services have not been tested. We have established professional relationships with third-party suppliers for the provision of services to Clients, details of which can be found on the property listing page on our website.