



Campden Hill Square, W8  
£4,600,000





## Campden Hill Square, W8

A stunning, low-built Arts and Crafts-style house located on a desirable residential road in prime Kensington. Originally constructed in 1929 by renowned architect T.P. Figgis, this exceptional home also benefits from access to one of Kensington's most desirable private garden square.

An immaculately presented and beautifully refurbished freehold house, measuring 2,066 sq ft. Entered on the ground floor into a stylish, open-plan reception and dining area with a high-specification kitchen, this space features wooden floors, a striking feature fireplace, and direct access to a south-west facing patio garden - perfect for entertaining.

The lower ground floor offers a flexible living area with high ceilings, a separate utility room, and clever 'Blue Sky' ceiling lights. Currently arranged as a study and spacious second reception room, it also opens onto a private patio.

Upstairs, the principal bedroom has a luxurious en suite and built-in wardrobes, accompanied by four further bedrooms and a family bathroom.

Campden Hill Square has the highly regarded Fox Primary School and the green spaces of Holland Park nearby making this is an exceptional location for families seeking both convenience and quality of life.

### Features

- Five Bedrooms
- Two Bathrooms
- SW Facing Patio Garden
- High Specification
- Private Garden Square
- Prime Kensington







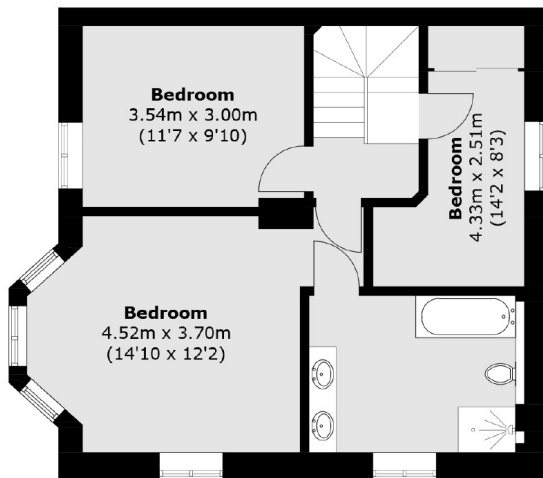




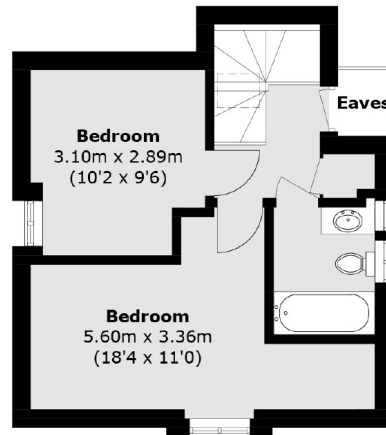




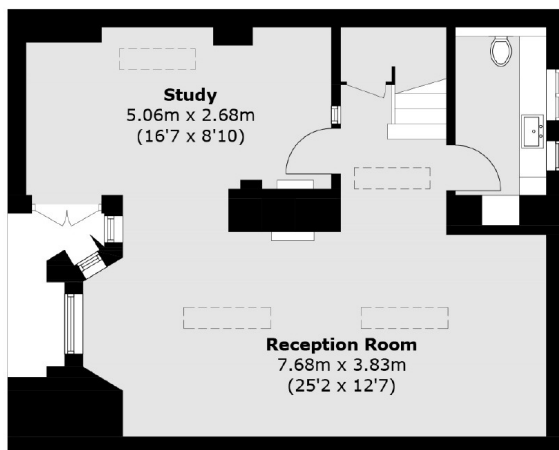
# Campden Hill Square, London, W8



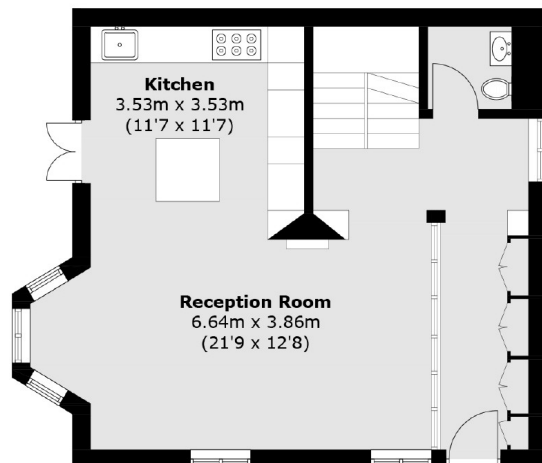
**First Floor**



**Second Floor**



**Basement**



**Ground Floor**

Total area (approx.): 192.0 sq. m (2,066.6 sq. ft)  
(Including Basement/ Excluding Eaves)