

41 Telekebir Road, Pontypridd, CF37 2RL

£173,000

Nestled on Telekebir Road in the charming town of Pontypridd, this delightful mid-terraced house presents an excellent opportunity for families and first-time buyers alike. The property boasts three well-proportioned bedrooms, providing ample space for relaxation and rest. The layout includes a convenient first-floor bathroom, complemented by an additional ground floor WC, ensuring that the needs of a busy household are well catered for.

The heart of the home is undoubtedly the newly fitted kitchen, which opens into a generous kitchen/diner. This inviting space is perfect for both everyday meals and entertaining guests, making it a wonderful hub for family gatherings.

Outside, the property features a level rear garden, offering a private outdoor space for children to play or for adults to unwind after a long day. The absence of an onward chain simplifies the buying process, allowing for a smoother transition into your new home.

With its ideal location and practical features, this mid-terraced house on Telekebir Road is a fantastic choice for those seeking comfort and convenience in Pontypridd. Don't miss the chance to make this lovely property your own.

Entrance Hallway 3'1" x 13'2" (0.94 x 4.02)



Single Radiator with a double plug socket

Living Room/ Dining Room 11'10" x 21'11" (3.61 x 6.69)



2x radiators with 2x double glazed window

Kitchen 7'10" x 13'7" (2.39 x 4.16)



Gas hob with electric oven, sink and 2x double glazed windows

WC/ Utility Room 5'7" x 3'0" (1.71 x 0.92)



2x radiators, boiler and plumbing for the washing machine.

First Floor Landing 3'3" x 8'0" (1.00 x 2.46)

Bedroom 1 8'8" x 16'6" (2.66 x 5.03)



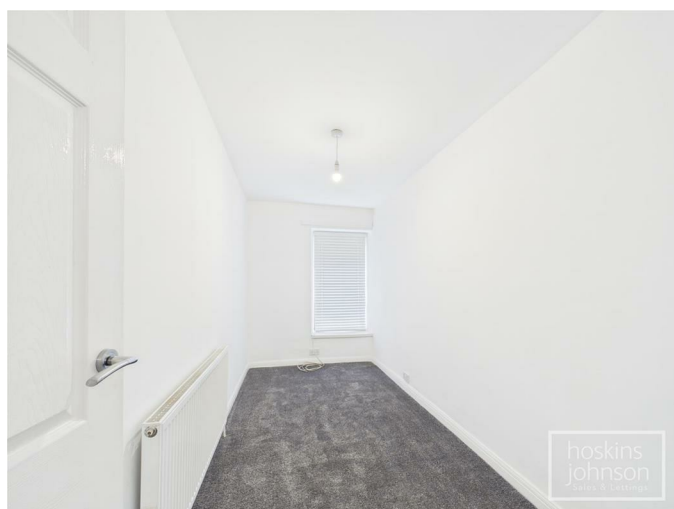
2x double plug sockets with one radiator and a window.

Bedroom 2 8'0" x 13'10" (2.44 x 4.24)



3x double plug sockets and a radiator. A window with fitted blinds.

Bedroom 3 6'2" x 13'6" (1.89 x 4.12)



3 double plug sockets, 1x window and radiator.

Bathroom 9'1" x 5'1" (2.78 x 1.56)



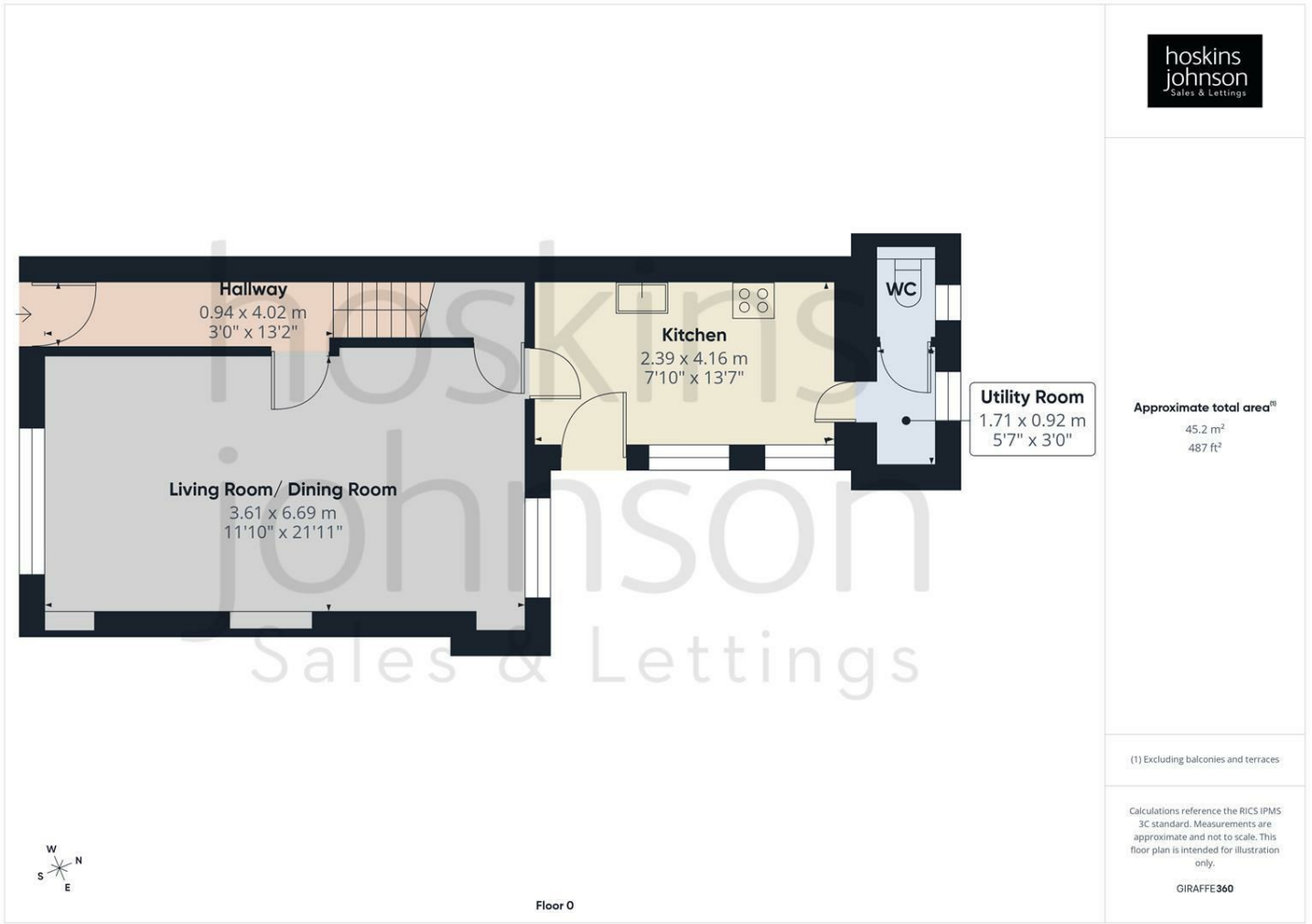
Shower/ bath with a wash hand basin and a heated towel rail.

Outside

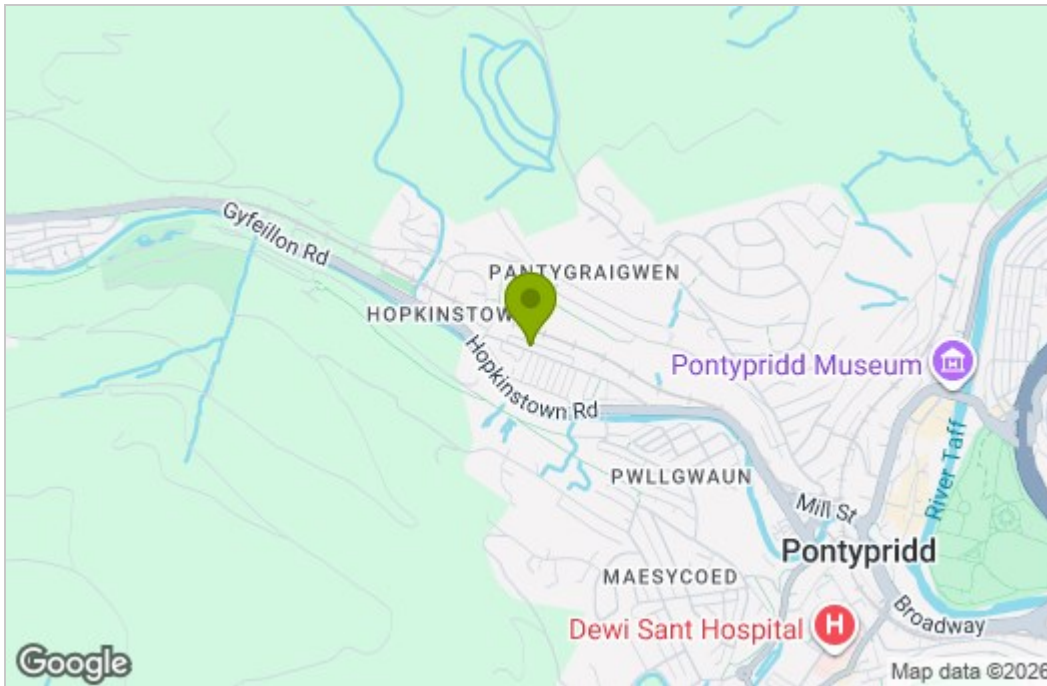


Level rear garden with back lane access

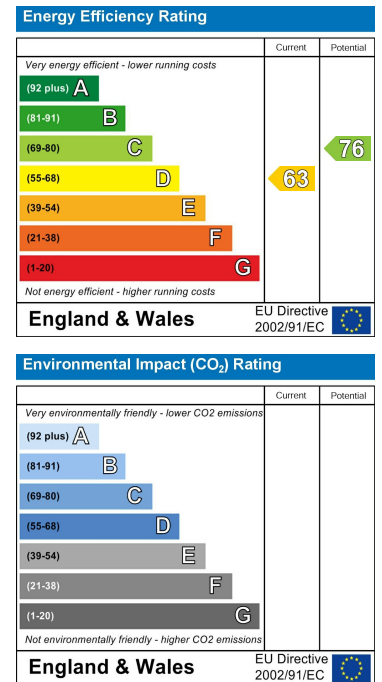
Floor Plan



Area Map



Energy Efficiency Graph



These particulars, whilst believed to be accurate are set out as a general outline only for guidance and do not constitute any part of an offer or contract. Intending purchasers should not rely on them as statements of representation of fact, but must satisfy themselves by inspection or otherwise as to their accuracy. No person in this firm's employment has the authority to make or give any representation or warranty in respect of the property.

22 Market Street, Pontypridd, CF37 2ST

Tel: 01443 404093 Email: pontypridd@hoskinsjohnson.co.uk www.hoskinsjohnson.co.uk