



Albrighton Road, SE22 | £350,000

02087028222

[eastdulwich@pedderproperty.com](mailto:eastdulwich@pedderproperty.com)

**pedder**  
We live local





# In General

- Two bedroom
- Purpose-built apartment
- Ex-local authority
- Over 560 Sq Ft
- Good condition throughout
- 4th Floor
- Large, communal gardens

# In Detail

CHAIN FREE - Charming and beautifully bright purpose-built two bedroom apartment on the fourth-floor of this recognisable block ideally located between East Dulwich, Camberwell and Peckham Rye.

Wilton House, Albrighton Road is enviably located for the excellent transport links from East Dulwich station (0.3 miles) and Denmark Hill station (0.5 miles) as well as bus/cycle routes through the neighbouring Herne Hill, Peckham and Brixton.

There are a host of independent shops, bars, restaurants and coffee shops nearby on Lordship Lane and Bellenden Road as well as a choice of parks and green spaces - including the famous Dulwich Hamlet Football Club.

Boasting over 560 Sq Ft of internal space which has been lovingly maintained by the current owner. There is a 13x11 ft reception room with a separate fitted kitchen along with two comfortable bedrooms and a bathroom with separate WC.

EPC: D | Council tax band: B | Lease: 101 years remaining | GR: £10 pa | SC: £1794.89 pa | BI: £671.10 pa

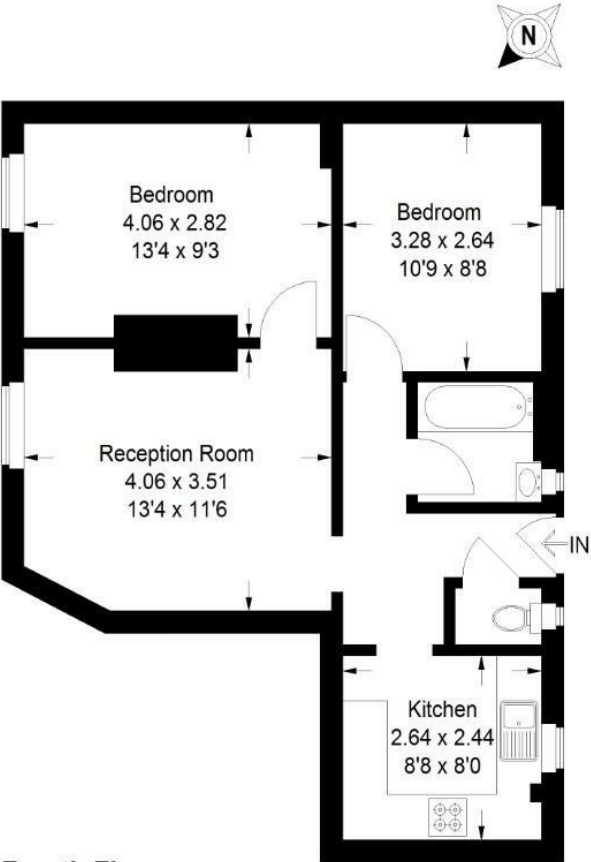




# Floorplan

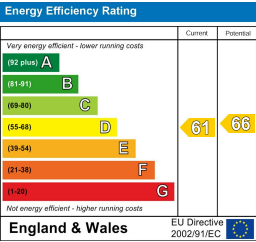
## Wilton House, SE22

Approximate Gross Internal Area  
52.8 sq m / 568 sq ft



### Fourth Floor

Copyright [www.pedderproperty.com](http://www.pedderproperty.com) © 2025  
These plans are for representation purposes only as defined by RICS - Code of Measuring Practice. Not drawn to Scale. Windows and door openings are approximate. Please check all dimensions, shapes and compass bearings before making any decisions reliant upon them.



Pedder Property Ltd trading as Pedder for themselves and for the vendor/landlord of this property whose agents they are, give notice that (1) these particulars do not constitute any part of an offer or contract, (2) all statements contained within these particulars are made without responsibility on the part of Pedder or the vendor/landlord, (3) whilst made in good faith, none of the statements contained within these particulars are to be relied upon as a statement of representation or fact, (4) any intending purchaser/tenant must satisfy him/herself by inspection or otherwise as to the correctness of each of the statements contained within these particulars, (5) the vendor/landlord does not make or give either Pedder or any person in their employment any authority to make or give representation or warranty whatsoever in relation to this property.