

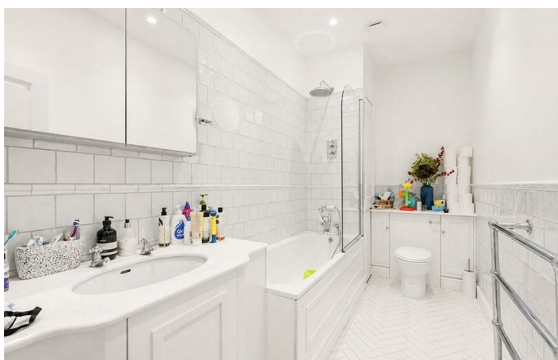


Bentinck Street, Marylebone, London, W1U

Rent £2,000 PCM

3 Bed | 2 Bath | 1 Reception

Please call us on 020 7724 2233 or email us info@newingtonstates.com to book a viewing.



A spacious three-bedroom lateral apartment offering generous living accommodation and high-quality finishes in a prime central London location. The property features a large double reception room, a separate kitchen, and three well-proportioned bedrooms. Two bathrooms, including one en-suite shower room, provide added convenience, while the recent refurbishment enhances the modern finish throughout. The generous proportions make the apartment ideal for professional sharers or a small family.

Ideally located close to Marylebone High Street and within easy reach of Oxford Street, with excellent transport links and local amenities nearby.

EPC Rating: C

Energy Efficiency Rating: C

Agents Note: Whilst every care has been taken to prepare these particulars, they are for guidance purposes only. All measurements are approximate and are for general guidance purposes only and whilst every care has been taken to ensure their accuracy, they should not be relied upon and potential buyers/tenants are advised to recheck the measurements.

NEWINGTON
— ESTATES —

60 Upper Montagu Street

London

W1H 1SN

020 7724 2233

info@newingtonstates.com

<http://www.newingtonstates.com>