

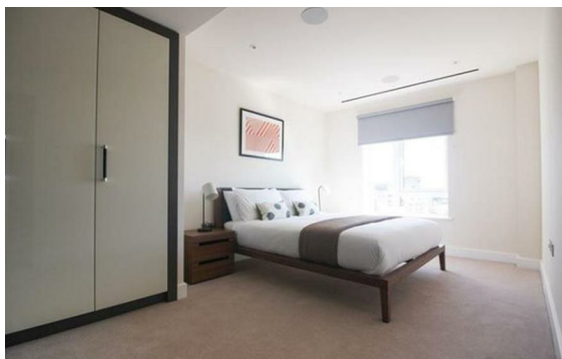


Hansel Road, Kilburn, London, NW6

Rent £690 Per Month

2 Bed | 2 Bath | 1 Reception

Please call us on 020 7724 2233 or email us info@newingtonstates.com to book a viewing.



A beautifully presented two double bedroom apartment with private terrace, set within a modern, well-maintained development.

The property offers a bright open-plan kitchen and reception space, two spacious double bedrooms, and two bathrooms. Residents benefit from lift access, secure entry with CCTV, and a private balcony providing excellent outdoor space.

Ideally positioned moments from local amenities and within easy reach of Kilburn Park Station, the apartment is offered fully furnished and ready to move into.

EPC: B

Energy Efficiency Rating: B

Agents Note: Whilst every care has been taken to prepare these particulars, they are for guidance purposes only. All measurements are approximate and are for general guidance purposes only and whilst every care has been taken to ensure their accuracy, they should not be relied upon and potential buyers/tenants are advised to recheck the measurements.

NEWINGTON
— ESTATES —

60 Upper Montagu Street

London

W1H 1SN

020 7724 2233

info@newingtonstates.com

<http://www.newingtonstates.com>