



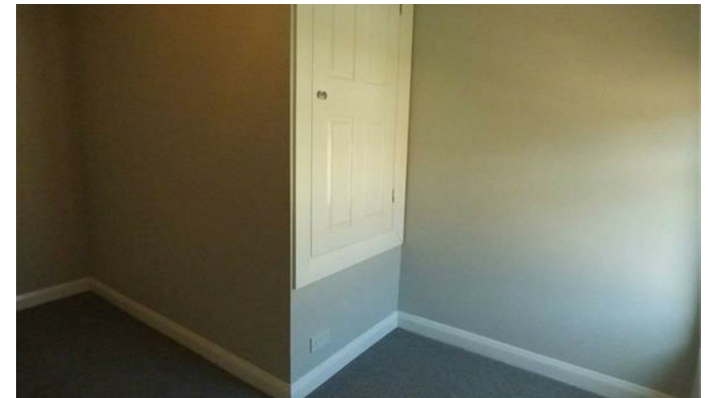
Rosalind Street , Ashington NE63 9BN

- £625.00 PCM
- TWO BEDROOMS
- NEW BATHROOM
- UNFURNISHED
- AVAILABLE 1ST JUNE 2026
- MODERN KITCHEN
- ADDITIONAL W/C

£625 PCM



Local Authority: Northumberland County Council
Council Tax Band: A
EPC Rating: C



Anderson Properties Lettings
Office
95 St Georges Terrace, Jesmond,
Newcastle Upon Tyne, Tyne And Wear,
NE2 2DN

Contact
0191 2817311
info@andersonproperties.co.uk
www.andersonproperties.co.uk

Agents Note: Whilst every care has been taken to prepare these particulars, they are for guidance purposes only. All measurements are approximate and for general guidance purposes only and whilst every care has been taken to ensure accuracy, they should not be relied upon and potential buyers/tenants are advised to recheck the measurements.