



13 Castle Road, Nuneaton

Nuneaton

Offers in Region of £230,000



**SHELDON
BOSLEY
KNIGHT** LAND AND
PROPERTY
PROFESSIONALS

13 Castle Road

Nuneaton, Nuneaton

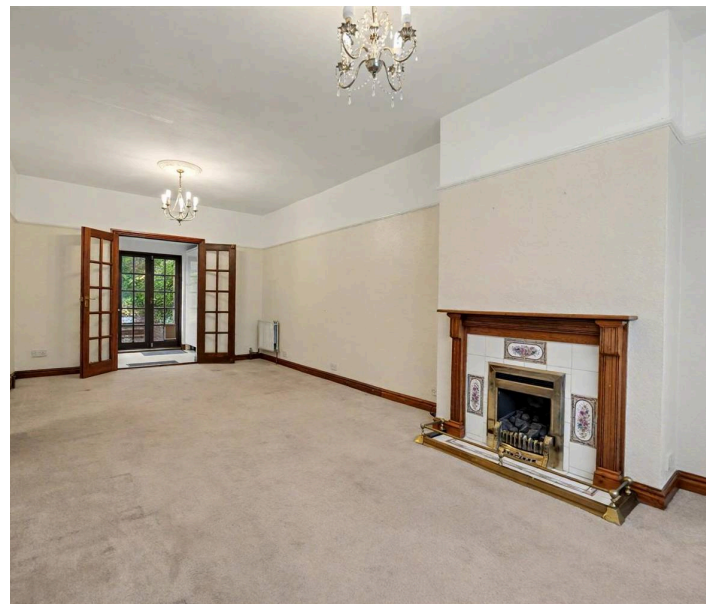
Sheldon Bosley Knight are delighted to present this extended three-bedroom semi-detached home, ideally located in the ever-popular Weddington area of Nuneaton – renowned for its picturesque surroundings, green spaces, and peaceful community feel. Perfect for first-time buyers or savvy investors, this property represents an exciting opportunity for anyone seeking a project with strong long-term potential. While the home requires some modernisation, the scope to add value is undeniable. The property is offered with *NO UPWARD CHAIN*

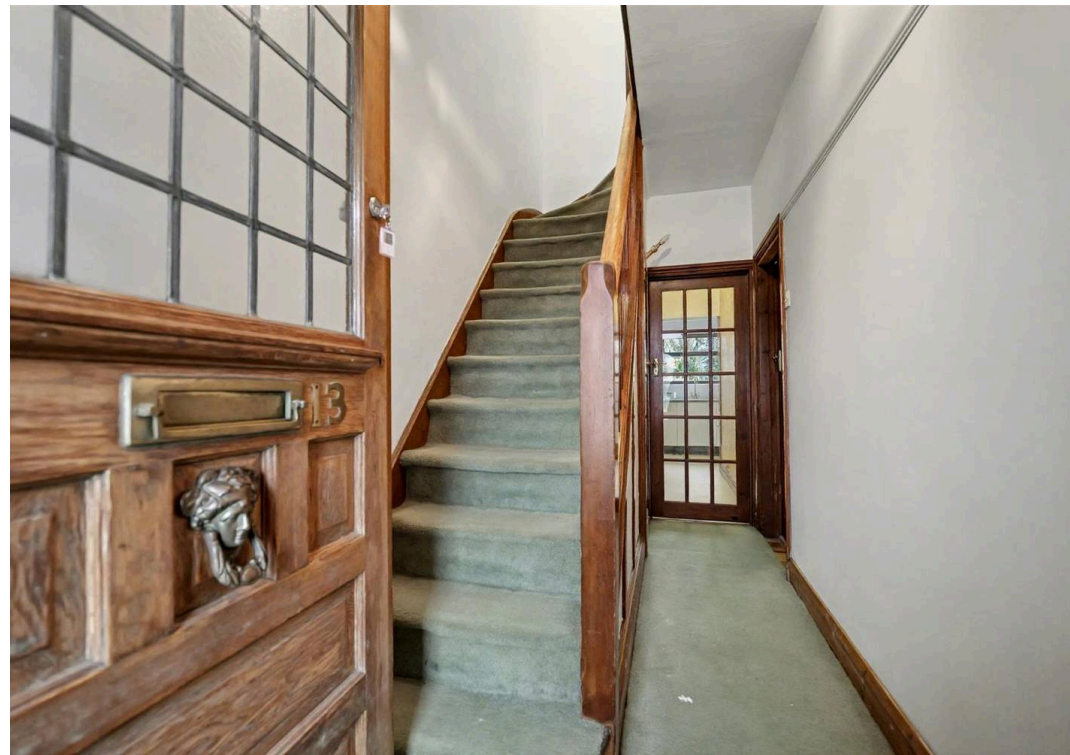
Upon entering, you are welcomed by a bright hallway that leads into the spacious bay-fronted lounge/dining room, complete with a charming feature fireplace. Double doors open into the kitchen, creating a natural and sociable flow throughout the ground floor. The L-shaped kitchen extends into a practical utility area and a convenient downstairs WC, completing the ground floor accommodation.

Upstairs, the home offers two generous double bedrooms and a well-proportioned single. The main bedroom features a charming bay window, bringing in plenty of natural light. The family bathroom includes a walk-in shower and a classic white suite.

Outside, the sizeable rear garden is a true asset, featuring a pond, fruit trees, a shed, and a greenhouse – perfect for keen gardeners or anyone seeking outdoor space. To the front, the property benefits from off-street parking for two vehicles.

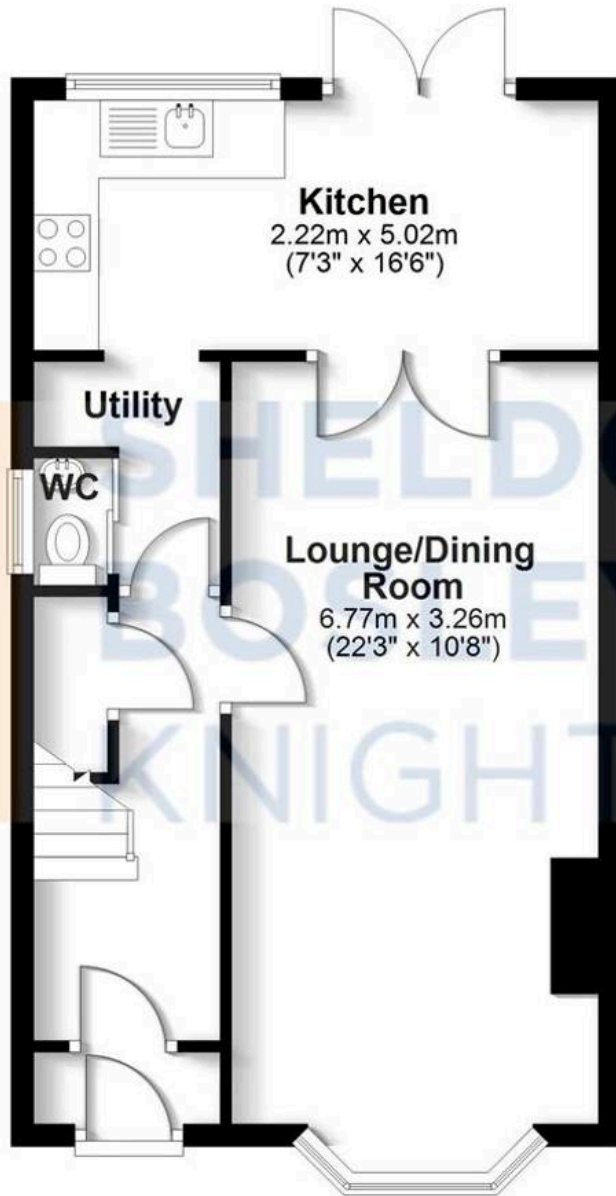
Homes offering this level of potential in Weddington are rarely available and always attract strong





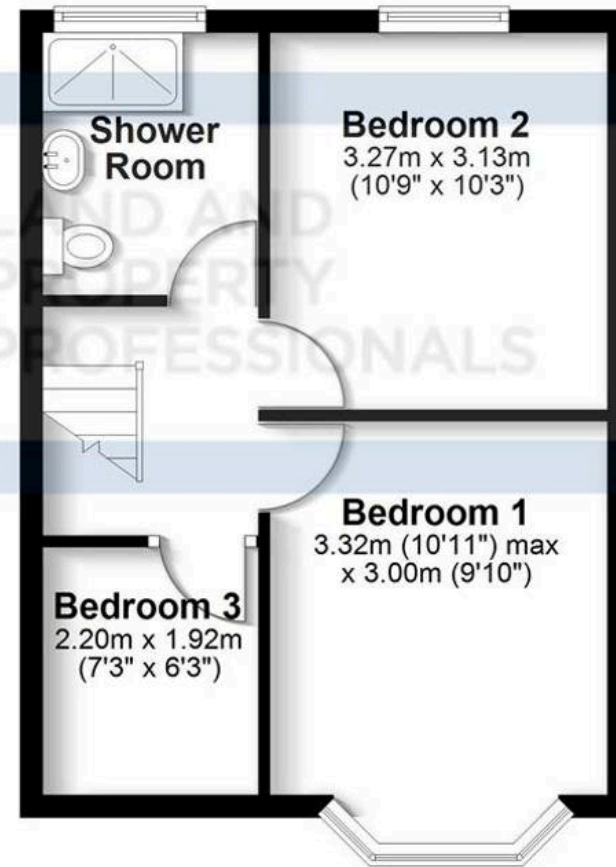
Ground Floor

Approx. 45.9 sq. metres (493.7 sq. feet)



First Floor

Approx. 34.4 sq. metres (370.4 sq. feet)



Total area: approx. 80.3 sq. metres (864.0 sq. feet)

All efforts have been made to ensure the measurements are accurate on this floor plan, however these are for guidance purposes only.
Plan produced using PlanUp.



Sheldon Bosley Knight Nuneaton

Sheldon Bosley Knight, 39 Newdegate Street, Nuneaton - CV11 4ER

02476374949 • nuneaton@sheldonbosleyknight.co.uk • www.sheldonbosleyknight.co.uk/