

TO LET



Junction Road, South Croydon, CR2.

A Beautifully Refurbished 3 Bedroom House with Parking

Available Now at £2,600 Per Calendar Month



Junction Road , South Croydon

3 Bedrooms, 1 Bathroom

£2,600 pcm

Date available: 16th May 2026

Deposit: £3,000

Unfurnished

Council Tax band: D

- Stunning Refurbished House
- Three Bedrooms
- 2 Receptions + Office
- Eat-In Kitchen
- Utility Room
- Luxury Bathroom
- Landscaped Garden
- Parking for 2 Cars

This outstanding three-bedroom terraced house sits in the heart of sought-after South Croydon, delivering a perfect blend of period charm together with cutting-edge contemporary features. The house is presented in truly exceptional, newly renovated condition throughout.

On arrival, off-street parking for two cars welcomes you, with a practical front tap and power point ideally suited to car care.

Step inside to discover expansive, light-filled living spaces brimming with thoughtful, high-quality finishes.

The heart of the home is an outstanding kitchen/dining/family area, featuring a vast roof-light and triple glazed patio doors that bathe the space in natural light.

The brand new, high-specification kitchen is a chef's dream with sleek integrated appliances – including dishwasher, oven, hob, extractor and full-height fridge-freezer – paired with innovative storage solutions such as full-height cupboards, plinth drawers, integrated recycling containers, and worktop lighting.





You can also enjoy music while you cook, courtesy of the integrated bluetooth/DAB radio and ceiling speakers.

The adjoining utility room brings order and convenience with further top-grade units, worktop lighting, a handy hanging rail and airing rack, plus high-efficiency boiler and extra insulation.

The bright living room displays period touches such as a feature fireplace and picture rail and provides a welcoming area for relaxation. There is also a useful office room on the ground floor perfect for remote working, study, or hobbies, with extensive power and internet points plus adaptable shelving spanning each wall.

Upstairs, there are three good-sized bedrooms which offer flexibility for sleeping or as additional workspaces, thanks to multiple sockets and connectivity points. The particularly spacious master bedroom boasts floor-to-ceiling wardrobes and integrated dressing table.

Bring the spa experience home in a bright family bathroom, bathed in sunlight from ingenious sun tunnels. Enjoy thoughtful details including thermostatic shower, LED mirrors, shower baskets, programmable towel rail, integrated bluetooth/DAB speakers, and plenty of handy storage.

Every aspect of this home has been meticulously curated to maximise light, comfort and efficiency: triple and double glazing, underfloor insulation, weather-responsive heating controls, stellar fire safety systems, CAT 6 cabling, satellite connectivity, and energy-efficient LED lighting throughout.

Perfect practicality continues with loft and under-stairs storage, new electrics/consumer unit, fibre broadband and integrated home tech, all elegantly finished by period ceiling roses, cornicing and stylish new window blinds.

To the rear, a private garden awaits – enchanting



perennial flowerbeds and a colourful patio blend beautifully, enhanced by flood and architectural lighting for year-round ambience. Essential touches include a generous 1250-litre rainwater storage system, external power points, a tidy shed, and rotary washing line.

Junction Road itself offers a welcoming community, with an annual street party and a well-regarded 'local', the Crown and Sceptre pub. Excellent amenities and shops lie close at hand, and transport links are first-class: South Croydon station is just ten minutes walk for effortless city commuting, with convenient bus routes also nearby.

This remarkable house combines character, technology, and location sure to appeal to anyone seeking an immaculate, future-proofed home in a thriving London suburb.

To discover everything this impressive property has to offer, arrange your private viewing today!



Score	Energy rating	Current	Potential
92+	A		
81-91	B		82 B
69-80	C	75 C	
55-68	D		
39-54	E		
21-38	F		

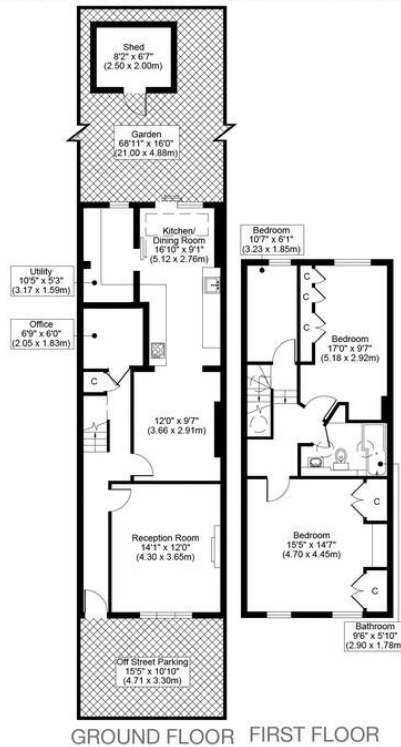


Martin & Co



Martin & Co

JUNCTION ROAD, CR2
 TOTAL APPROX FLOOR PLAN AREA INCLUDING SHED 1312 SQ.FT (122 SQ.M)
 TOTAL APPROX FLOOR PLAN AREA EXCLUDING SHED 1258 SQ.FT (117 SQ.M)



All measurements, walls, doors, windows, fittings and their appliances, their size and locations are shown conventionally and are approximate only and cannot be regarded as being a representation either by the seller or his agent.



Martin & Co Croydon
 145 Brighton Road • • South Croydon • CR2 6EF
 T: 0208 688 8565 • E: croydon@martinco.com

0208 688 8565
<http://www.martinco.com>



Accuracy: References to the Tenure of a Property are based on information supplied by the Seller. The Agent has not had sight of the title documents. A Buyer is advised to obtain verification from their Solicitor. Items shown in photographs including but not limited to carpets, fixtures and fittings are not included unless specifically mentioned within the sales particulars. They may however be available by separate negotiation. Buyers must check the availability of any property and make an appointment to view before embarking on any journey to see a property. No person in the employment of the agent has any authority to make any representation about the property, and accordingly any information given is entirely without responsibility on the part of the agents, sellers(s) or lessors(s). Any property particulars are not an offer or contract, nor for part of one. **Sonic / Laser Tape:** Measurements taken using a sonic / Laser tape measure may be subject to a small margin of error. **All Measurements:** All Measurements are Approximate. **Services Not tested:** The Agent has not tested any apparatus, equipment, fixtures and fittings or services and so cannot verify that they are in working order or fit for the purpose. A Buyer is advised to obtain verification from their Solicitor or Surveyor.

