



barnard marcus

Acer Heights Parkside Avenue, London SE10 8GZ


barnard
marcus

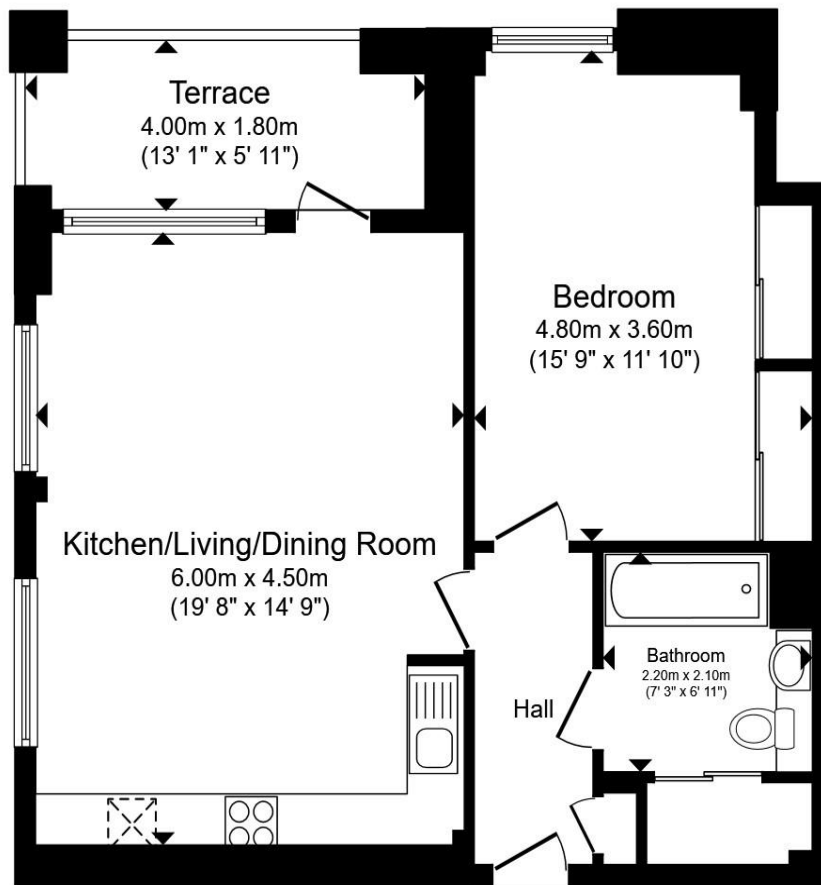
welcome to

Acer Heights Parkside Avenue, London

ONE BEDROOM ideal for FIRST TIME BUYERS & INVESTORS ALIKE

Comprising of an OPEN-PLAN living space features floor to ceiling southwest facing windows, with panoramic vistas from the London Eye to Canary





Floor Plan



Entrance Hall

Kitchen/Living/Dining Room

19' 8" x 14' 9" (5.99m x 4.50m)

Terrace

13' 1" x 5' 11" (3.99m x 1.80m)

Bedroom One

15' 9" x 11' 10" (4.80m x 3.61m)

Bathroom

7' 3" x 6' 11" (2.21m x 2.11m)

Total floor area 55.4 m² (596 sq.ft.) approx

This floor plan is for illustrative purposes only. It is not drawn to scale. Any measurements, floor areas (including any total floor area), openings and orientation are approximate. No details are guaranteed, they cannot be relied upon for any purpose and they do not form part of any agreement. No liability is taken for any error, omission or misstatement. A party must rely upon its own inspection(s). Powered by www.propertybox.io



welcome to

Acer Heights Parkside Avenue, London

- ONE DOUBLE BEDROOM
- MODERN APARTMENT
- PRIVATE TERRACE
- OPEN-PLAN LIVING/KITCHEN-DINER
- BUILT-IN STORAGE

Tenure: Leasehold EPC Rating: B

Council Tax Band: B Service Charge: 2466.24

Ground Rent: Ask Agent

This is a Leasehold property with details as follows; Term of Lease 999 years from 01 Jan 2023. Should you require further information please contact the branch. Please Note additional fees could be incurred for items such as Leasehold packs.

guide price

£375,000



view this property online [barnardmarcus.co.uk/Property/PKM103693](https://www.barnardmarcus.co.uk/Property/PKM103693)

Please note the marker reflects the postcode not the actual property



Property Ref:
PKM103693 - 0004

1. MONEY LAUNDERING REGULATIONS Intending purchasers will be asked to produce identification documentation at a later stage and we would ask for your co-operation in order that there is no delay in agreeing the sale. 2. These particulars do not constitute part or all of an offer or contract. 3. The measurements indicated are supplied for guidance only and as such must be considered incorrect. Potential buyers are advised to recheck measurements before committing to any expense. 4. We have not tested any apparatus, equipment, fixtures or services and it is in the buyers interest to check the working condition of any appliances. 5. Where an EPC, or a Home Report (Scotland only) is held for this property, it is available for inspection at the branch by appointment. If you require a printed version of a Home Report, you will need to pay a reasonable production charge reflecting printing and other costs. 6. We are not able to offer an opinion either written or verbal on the content of these reports and this must be obtained from your legal representative. 7. Whilst we take care in preparing these reports, a buyer should ensure that his/her legal representative confirms as soon as possible all matters relating to title including the extent and boundaries of the property and other important matters before exchange of contracts.



barnard marcus



020 7635 8641



peckham@barnardmarcus.co.uk



152 Rye Lane, Peckham, London, SE15 4NB



[barnardmarcus.co.uk](https://www.barnardmarcus.co.uk)