



Randolph Street, NW1

£300,000

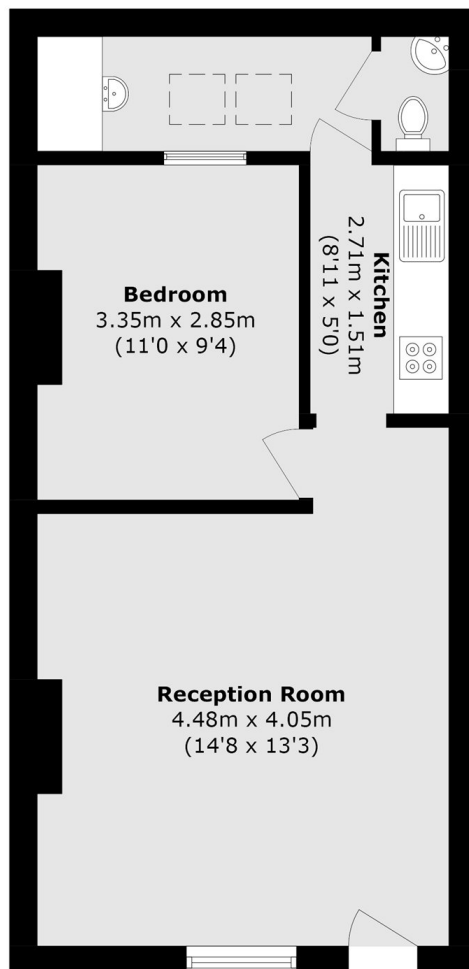
At approximately 476 sq.ft is this one double bedroom apartment with its own private entrance with a generous sized reception room and a fully integrated kitchen. The apartment is in need of refurbishment.

Randolph Street is close to the excellent amenities of both Camden Town and Kentish Town, with both areas boasting excellent choices of shops and restaurants. Camden Town, Kentish Town and Kings Cross St Pancras are both within a close proximity, offering multiple transport links alongside International trains.

Features

- One Double Bedroom
- One Bathroom
- Chain Free
- In Need Of Refurbishment
- Share Of Freehold
- Private Entrance

Randolph Street, London, NW1



Lower Ground Floor

Total area (approx.): 44.3 sq. m (476.8 sq. ft)