



2 bedroom Flat located in Colchester.

£1,150 pcm

Find us on..



JOHN ALEXANDER
ESTATE AGENTS

Meachen Road Colchester CO2 8JD

FULL DESCRIPTION

OVERVIEW

A well-presented two-bedroom first floor apartment situated in the sought-after Hythe area of Colchester, enjoying picturesque views over the River Colne.

The property offers two generously sized double bedrooms, two bathrooms, and a bright, spacious living area featuring a Juliet balcony overlooking the river, creating a wonderful space to relax and enjoy the waterside outlook.

THE HOME

Upon entering, you're welcomed into a central hallway that leads directly into the heart of the home - a bright and open kitchen/diner and living area measuring 19'4" reducing to 9'7" x 16'0" reducing to 11'4" (5.89m x 4.88m). This versatile space is ideal for both relaxing and entertaining, featuring a shaker-style kitchen complete with an integrated electric oven, hob, and extractor fan.

The main bedroom is generously sized at 15'0" x 9'4" (4.57m x 2.84m) and benefits from its own en-suite bathroom, offering privacy and convenience. The second bedroom, measuring 11'1" x 9'3" (3.38m x 2.82m), is perfect for guests, a home office, or additional family members. A stylish family bathroom completes the accommodation.

The property features a secure entry system, ensuring safety and convenience for residents. Additionally, it includes parking space for one car, providing easy access and peace of mind for vehicle owners.

THE LOCATION

Nestled in a vibrant neighbourhood, this property on Meachen Road is ideally situated for both convenience and leisure. Located just a short distance from the University of Essex, it offers excellent accessibility for students and staff alike.

The surrounding area boasts a variety of local amenities, including supermarkets, cafes, and parks, providing residents with everything they need within easy reach. Public transport options are readily available, with bus stops nearby offering connections to Colchester city centre and beyond.



2



2



0

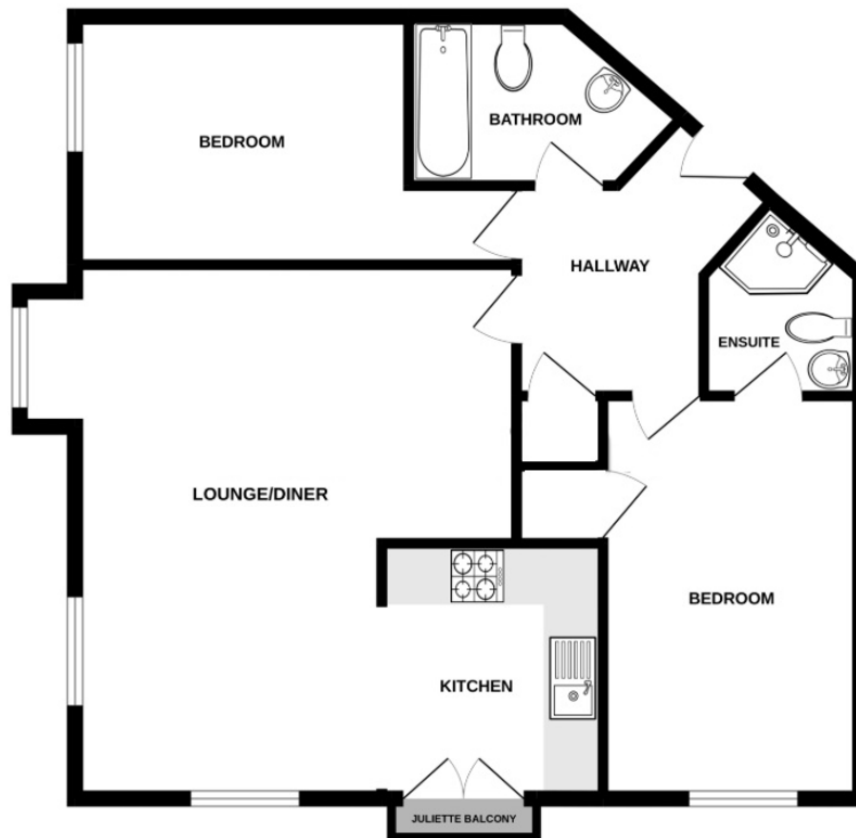


C





FLOORPLAN



DIRECTIONS

CONTACT

1 Church Road
Tiptree
Colchester
Essex
CO5 0LG

E

T

www.john-alexander.co.uk

Find us on..



JOHN ALEXANDER
ESTATE AGENTS