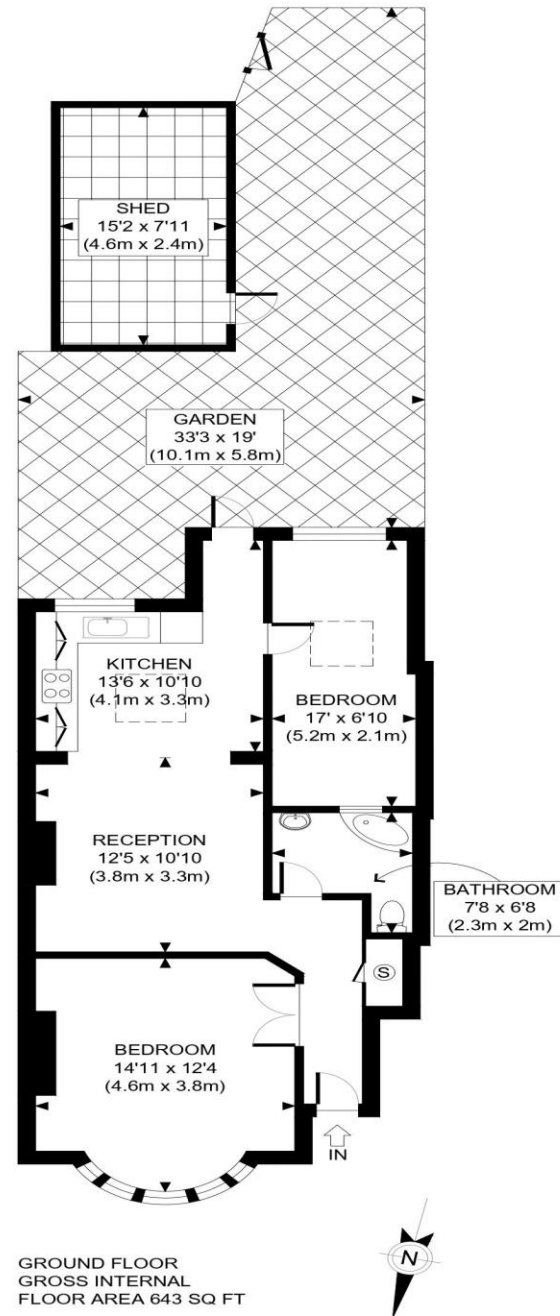


The Floorplan...



APPROX. GROSS INTERNAL FLOOR AREA: 643 SQ FT/ 60 SQM

This plan is for illustrative purposes only and should be used as such by any prospective client. Whilst every attempt has been made to ensure the accuracy of the Floor Plan contained here, measurements of the doors, windows, rooms and any other items are approximate and no responsibility is taken for any errors, omissions, or misstatement. The services, systems and appliances shown have not been tested and no guarantee as to the operability or efficiency can be given.

PROPERTY PHOTO PLANS
ONE STOP SHOP FOR PROPERTY MARKETING

More Details From...

Call: **Brian Cox North Harrow: 020 3866 6640**

Email: nhadmin@brian-cox.co.uk

Web: www.brian-cox.co.uk



0203 866 6640
brian-cox.co.uk



Brian Cox Estate Agents are delighted to offer to the market this recently refurbished two bedroom ground floor flat, ideally situated close to a range of local amenities, highly regarded schools, and excellent transport links via the Metropolitan Line. The property offers generous and well-presented accommodation throughout, comprising a welcoming entrance hallway, spacious lounge/diner open plan to modern fitted kitchen, two bedrooms and a contemporary family bathroom. Additional benefits include gas central heating, double glazing and a beautifully maintained rear garden with garage. The property has off street parking and sold with a share of the freehold.



£399,950

Share of Freehold

Blenheim Road, North Harrow HA2 7AG

Consumer Protection from Unfair Trading Regulations 2008 We have not tested any apparatus, equipment, fixtures, fittings or services and so cannot verify that they are in working order or fit for purpose. You are advised to obtain verification from your solicitor or surveyor. References to the tenure of a property are based on information supplied by the seller. We have not had sight of the title documents and a buyer is advised to obtain verification from their solicitor. Items shown in photographs are not included unless specifically mentioned within the sales particulars, but may be available by separate negotiation. We advise you to book an appointment to view before embarking on any journey to see a property, and check its availability.



In Brief...

- Two Good Sized Bedrooms
- Ground Floor
- Close to Met Line
- Share of Freehold
- Sought After Schools
- Attractive Garden
- Off Street Parking



The Location...

Nearest Stations ...

West Harrow (0.2 miles)
North Harrow (0.4 miles)
Rayners Lane (0.7 miles)

North Harrow is a suburban area of North West London, situated north-west of central Harrow within the London Borough of Harrow. North Harrow train station is a London Underground station situated in North Harrow in North West London. The station is on the Metropolitan line between Harrow-on-the-Hill (southbound) and Pinner (northbound). The area is served well by local amenities including a post office, Tesco Express, a selection of restaurants, take-aways & cafés and independent specialist shops. There are several schools in the area and churches.