

Woodvale Way, NW11

£375,000

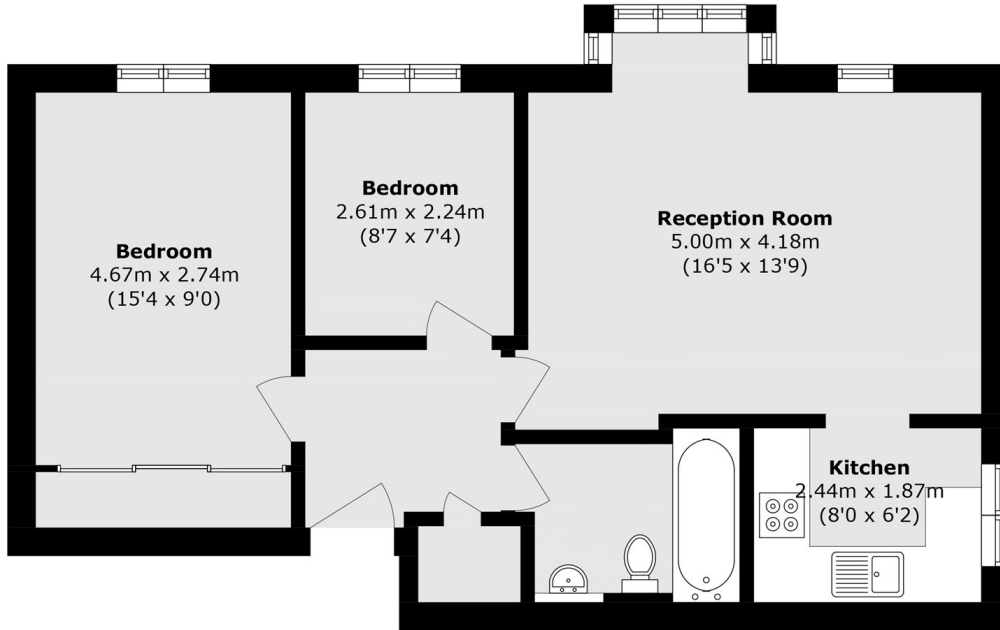
A well presented two bedroom first-floor apartment set within a purpose built block, ideal for first-time buyers or investors. The property features a spacious reception room, a separate kitchen, and a bathroom. It also benefits from no onward chain.

Woodvale Way is well located close to Cricklewood Station (Thameslink), Cricklewood Broadway with a range of local amenities, restaurants, cafés, Brent Cross and excellent transport and motorway links.

Features

- Purpose Built Flat
- Two Bedrooms
- Large Reception Room
- Communal Gardens
- Parking
- Chain Free

Woodvale Way,
London, NW11



First Floor

Total area (approx.): 53.1 sq. m (571.6 sq. ft)