



Price

£2,250 PCM

Fees Apply



Available 26/08/26

Westcliff Road Margate
CT9

Wards

Helping you move forwards



Main Features

[Sought After Location](#)

[Spacious Family Accommodation](#)

[Furnished Home](#)

[Original Features](#)

[Private Rear Garden](#)

[Close To The Beach](#)



Deposit required is £2,596.15
Thanet District - Council Tax Band Tax Band C

Renting a property is a big commitment and we recommend that you visit the local authority website and these websites which offer helpful information and advice about letting

www.gov.uk/government/publications/how-to-rent

www.gov.uk/private-renting

www.wardsofkent.co.uk/renting/tenancy-fees-individuals/

www.gov.uk/green-deal-energy-saving-measures

Call Thanet 01843 597600 ■ wardsofkent.co.uk

IMPORTANT INFORMATION: Please contact our Lettings Team who will confirm the total costs involved in renting this property. For clarification, we wish to inform the prospective tenant that we have prepared these details as a general guide. The agent has not carried out a detailed survey nor tested the services, appliances, or specific fittings (unless otherwise stated), and no warranty can be given as to their condition. All room measurements are taken at floor level. We strongly recommend that all the information which we provide about the property is verified by yourself and your advisers. The contents of this publication are © Wards, 2015. Wards is a trading name of Arun Estates Limited Registered in England No. 2597969

Accommodation

Hallway

Lounge Dining Room 7.99 x 2

Kitchen Breakfast Room 6.2 x 2.33

Bedroom 1 4.42 x 2

Bedroom 2 3.92 x 3.52

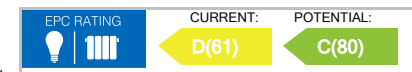
Bedroom 5 2.11 x 2.23

Family Bathroom

Shower Room

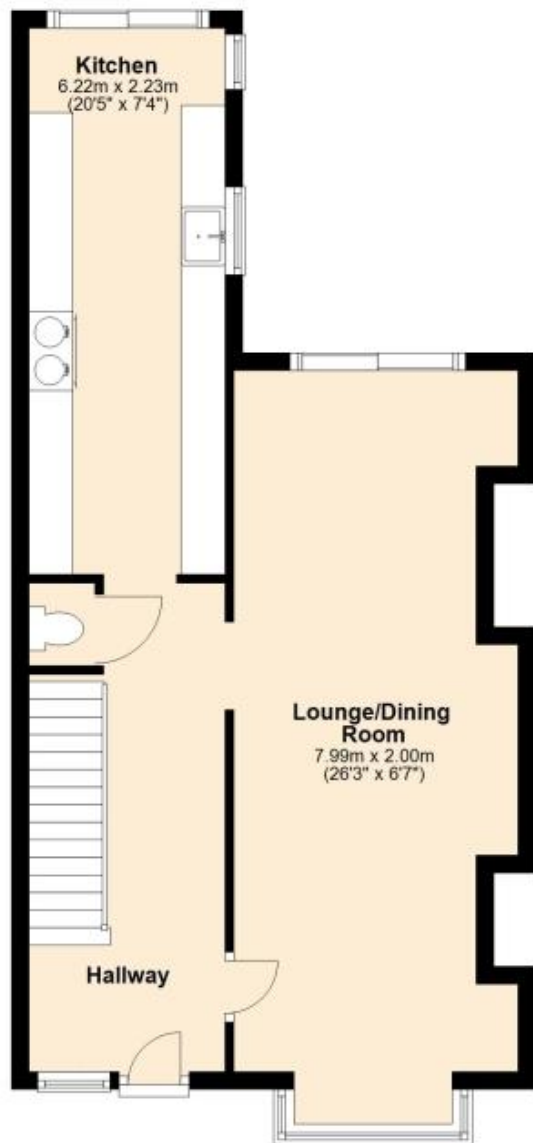
Bedroom 3 5.13 x 2.61

Bedroom 4 3.35 x 3.33



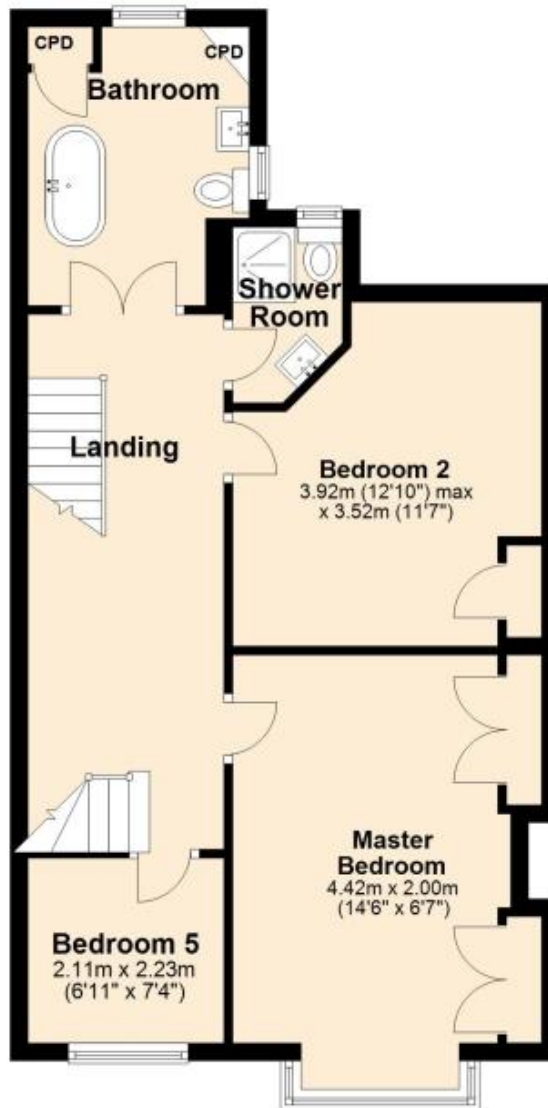
Ground Floor

Approx. 52.1 sq. metres (560.3 sq. feet)



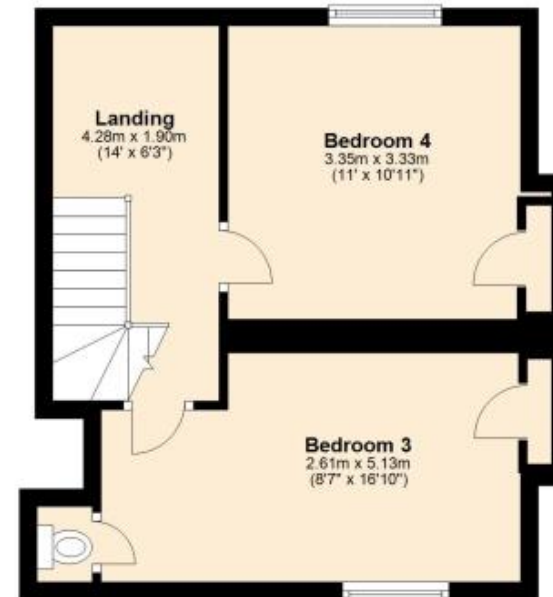
First Floor

Approx. 57.9 sq. metres (622.9 sq. feet)



Second Floor

Approx. 32.9 sq. metres (354.4 sq. feet)



Total area: approx. 142.9 sq. metres (1537.7 sq. feet)