



21 Whilton Close, Sutton-In-Ashfield - NG17 3BF

Guide Price **£170,000**



21 Whilton Close

Sutton-In-Ashfield, Sutton-In-Ashfield

Well-presented two bedroom end townhouse with modern kitchen and shower room, conservatory, low maintenance garden, off-road parking, divided garage, and no upward chain. Sought-after location.

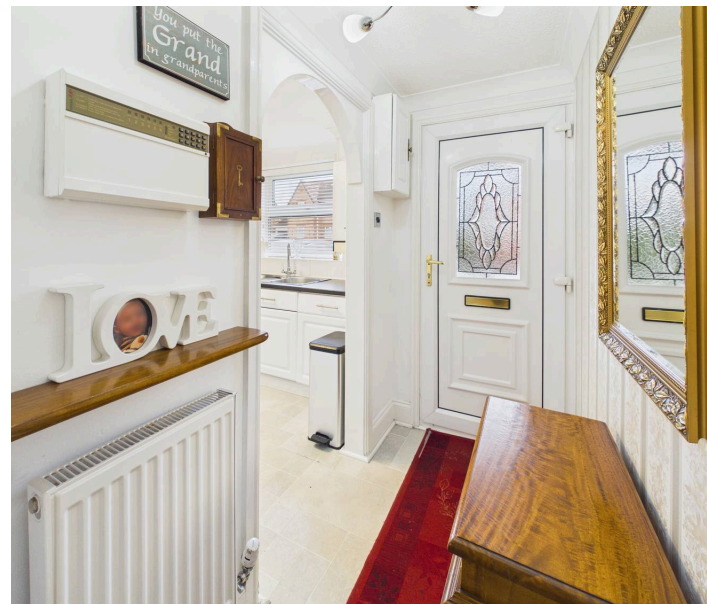
Council Tax band: B

Tenure: Freehold

EPC Energy Efficiency Rating: C

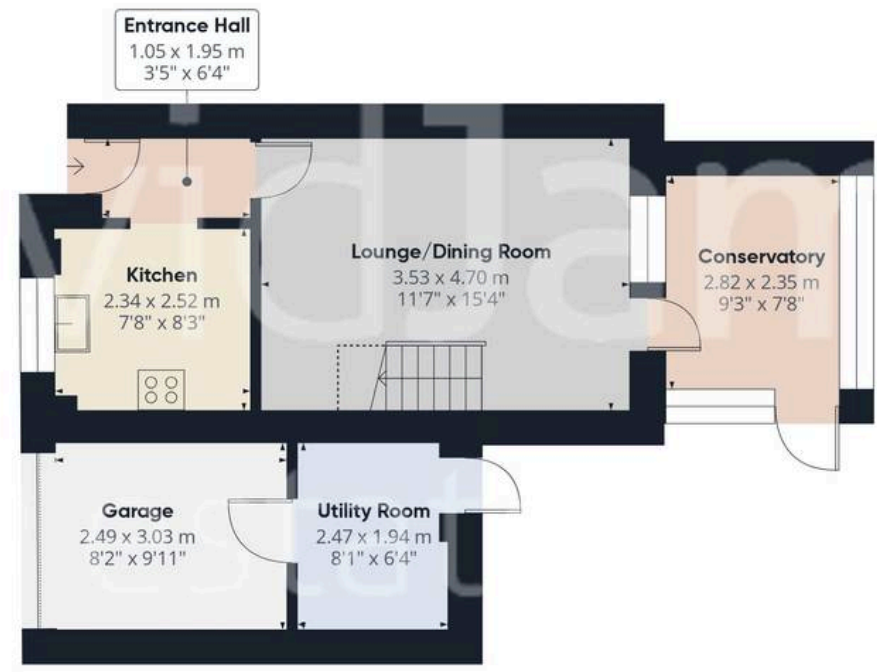
EPC Environmental Impact Rating:

- End townhouse set on a larger than average plot being sold with no upward chain
- Two bedrooms, bedroom one with built-in wardrobes
- Entrance hall with tiled finish flooring
- Lounge/Dining Room with open plan staircase leading to the first floor
- Kitchen with a range of white gloss panelled units and integrated oven and hob
- UPVC double glazed conservatory with tiled finish flooring and part glazed door leading to the rear garden
- Modern, fully tiled first floor shower room/Wc with walk-in shower cubicle with mains-fed shower
- Combination gas central heating, UPVC double glazing
- Low maintenance rear garden with patio area and slate gravelled bed
- Block paved driveway provides off road parking with potential for further parking space to the artificial lawned area
- Garage currently separated into two parts with









Floor 0



Floor 1



Approximate total area⁽¹⁾

66.3 m²
714 ft²

Reduced headroom

1.1 m²
12 ft²

(1) Excluding balconies and terraces

Reduced headroom

----- Below 1.5 m/5 ft

Calculations reference the RICS IPMS 3C standard. Measurements are approximate and not to scale. This floor plan is intended for illustration only.

GIRAFFE360



David James Estate Agents

43 Forest Street, Sutton-in-Ashfield - NG17 1DA

01623 554084 • sutton@david-james.com • www.david-james.com

These particulars are produced in good faith and are set out as a general guide only. Measurements are approximate and floor plans are for illustrative purposes only. Services have not been tested. We have established professional relationships with third-party suppliers for the provision of services to Clients, details of which can be found on the property listing page on our website.