



GUIDE PRICE

£500,000

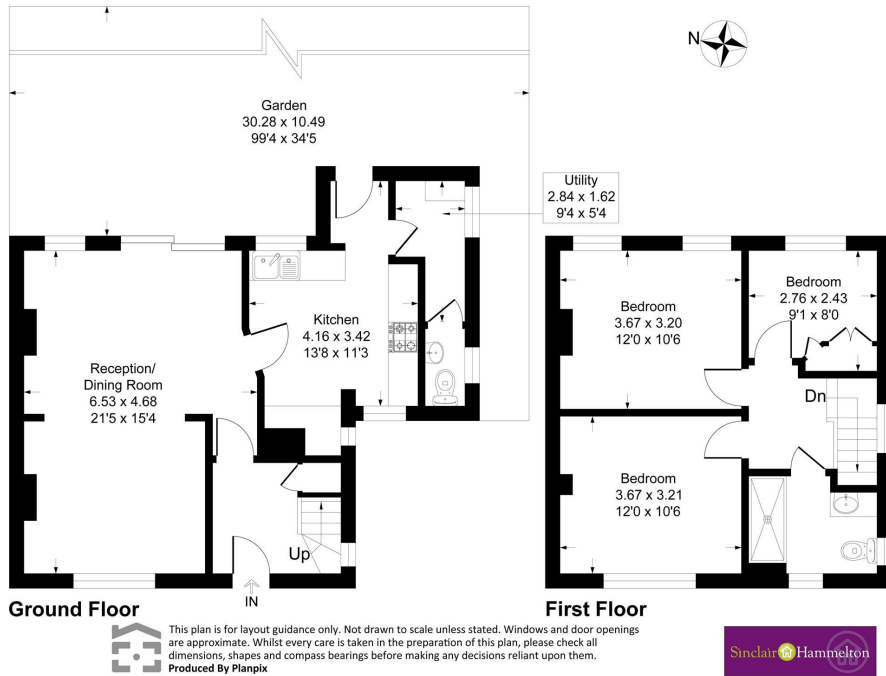
Granville Road

Westerham, TN16 1RS

EPC RATING: D COUNCIL TAX BAND: D

Granville Road, TN16

Approximate Gross Internal Area 97.4 sq m / 1049 sq ft



Energy Efficiency Rating		Current	Potential
Very energy efficient - lower running costs			
(92 plus)	A		
(81-91)	B		
(69-80)	C		75
(55-68)	D	58	
(39-54)	E		
(21-38)	F		
(1-20)	G		
Not energy efficient - higher running costs			
England & Wales		EU Directive 2002/91/EC	

Agents Note: Whilst every care has been taken to prepare these particulars, they are for guidance purposes only. All measurements are approximate and are for general guidance purposes only and whilst every care has been taken to ensure their accuracy, they should not be relied upon and potential buyers/tenants are advised to recheck the measurements



OFFICE ADDRESS
1&2 The Grange
Westerham
Kent
TN16 7AH

OFFICE DETAILS
01959 587 460
infowh@sinclairhammelton.co.uk
<https://www.sinclairhammelton.co.uk/for-sale-in-westerham/>