

Directions

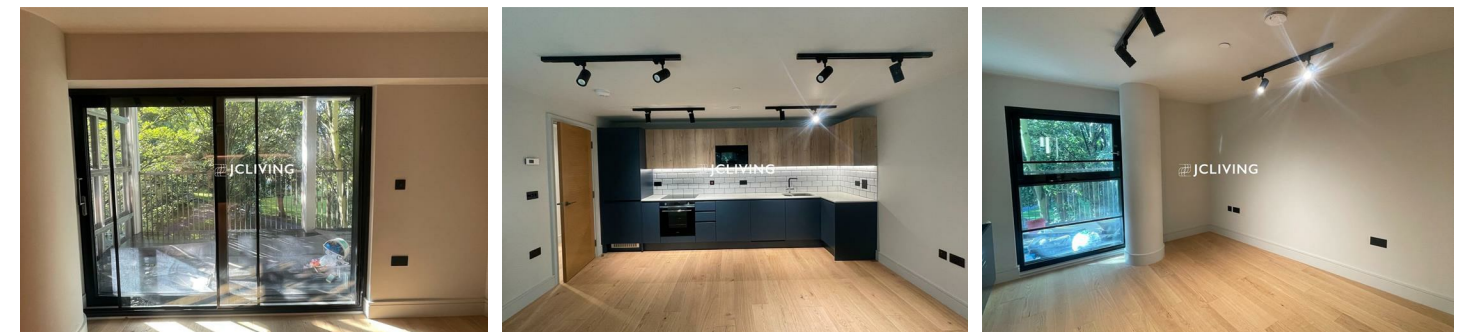
Viewings

Viewings by arrangement only. Call 02033696888 to make an appointment.

EPC Rating

B

Energy Efficiency Rating		Current	Potential
Very energy efficient - lower running costs			
(92 plus) A			
(81-91) B		86	
(69-80) C			
(55-68) D			
(39-54) E			
(21-38) F			
(1-20) G			
Not energy efficient - higher running costs			
England & Wales		EU Directive 2002/91/EC	



CN258, Flat 206, Newhams Yard 151 Tower Bridge Road, London, SE1 3JE

£785

Newhams Yard 151 Tower Bridge Road, London SE1

JCL

*** Please quote reference JC2309764 when contacting the office***

JC Living is proud to present this stylish two-bedroom, one-bathroom apartment with furniture included at Newham's Yard, SE1.

Located within the impressive Newham's Yard South development by Galliard Homes and Acorn Property Group on Tower Bridge Road, this contemporary apartment offers stylish city living just moments from the iconic Tower Bridge and vibrant Southwark area. The apartment is offered fully furnished—simply move in and start living.

Ideally located, the property is within easy walking distance of London Bridge Station (for both the Jubilee and Northern Underground lines, plus National Rail services) and Borough Underground Station, offering excellent transport links to Canary Wharf, the West End and beyond. Bermondsey Street is just a short walk away, known for its independent cafés, restaurants, and cultural spots, making this an ideal home for those seeking a vibrant London lifestyle. Tower Bridge, The Shard, and Borough Market are all within easy reach.

This exceptional two-bedroom apartment is available fully furnished to move in from 2nd July.



Council Tax Band: E

