



18 Hampton Close, Stevenage, SG2 8SP

Guide Price **£230,000**



18 Hampton Close

Stevenage

Being sold with lease extension upon completion with approx. **140 years remaining**.

Well suited to **first-time buyers, downsizers or investors**, the property enjoys an attractive position overlooking well-kept communal gardens, providing a peaceful outlook and pleasant setting.

A well-presented and spacious two-bed ground floor apartment in Bragbury End, offering modern interiors, allocated parking and strong value-add potential, priced to reflect the current lease term.

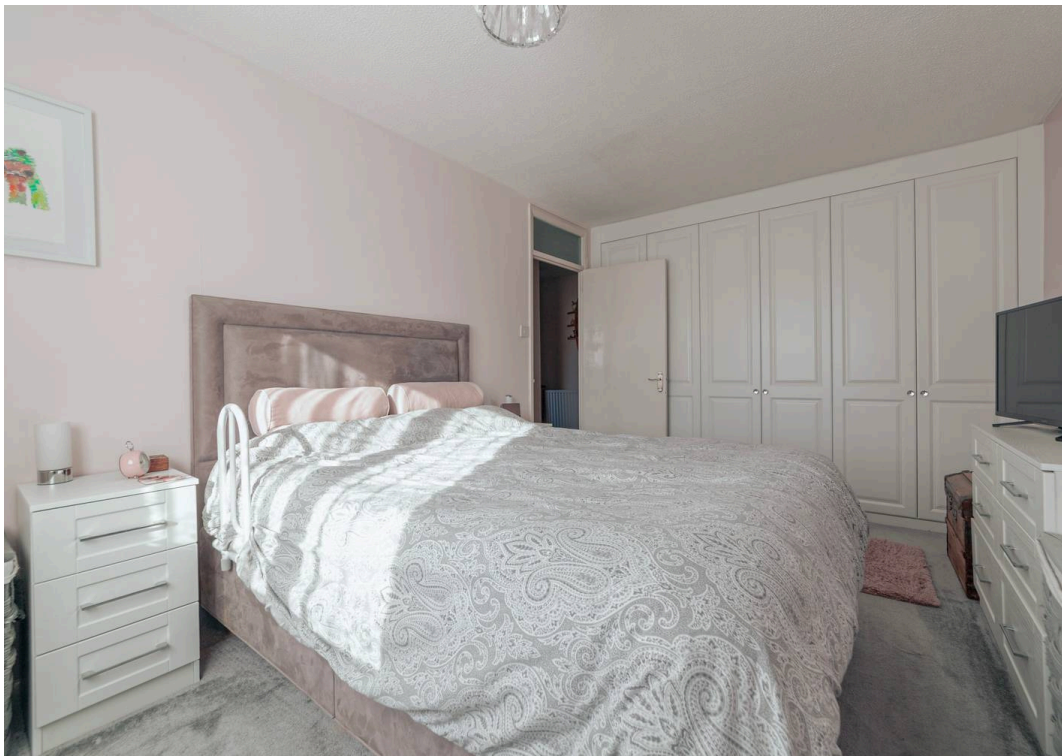
Council Tax band: B

Tenure: Leasehold

EPC Energy Efficiency Rating: C

EPC Environmental Impact Rating:

- 140 year lease upon completion
- Two-bedroom ground floor apartment
- Beautifully re-decorated throughout
- Bright and spacious living accommodation
- Extensive communal grounds
- Contemporary bathroom suite
- Allocated parking plus visitor spaces
- Modern fitted kitchen with integrated appliances





Approximate Internal Floor Area: 61sq m / 657sq ft. This floor plan is for illustrative purposes only.
All measurements, opening and orientation are approximate. No liability is taken for any error, omission or misstatement. A party must rely upon its own inspection

Nested Stevenage

Fora, 9 Dallington Street, London - EC1V 0LN

07840 697463 • steve.ralph@nested.com • nested.com/stevenage