

Pennys Estate Agents Limited for themselves and for the vendor of this property whose agents they are give notice that:- (1) These particulars do not constitute any part of an offer or a contract. (2) All statements contained in these particulars are made without responsibility on the part of Pennys Estate Agents Limited. (3) None of the statements contained in these particulars are to be relied upon as a statement or representation of fact. (4) Any intending purchaser must satisfy himself/herself by inspection or otherwise as to the correctness of each of the statements contained in these particulars. (5) The vendor does not make or give and neither do Pennys Estate Agents Limited nor any person in their employment has any authority to make or give any representation or warranty whatever in relation to this property.

3 Sylvan Court, Exeter Road, Exmouth,  
EX8 3NN

GUIDE PRICE  
**£120,000**  
TENURE Leasehold



**A Well Presented First Floor Flat Enjoying Pleasant Coastal Views  
Towards Haldon Hills**

A Good Size Lounge\* Modern Kitchen \* Double Bedroom \* Bathroom/Wc \*  
Gas Central Heating \* Double Glazed Windows \* Allocated Parking Space To  
The Rear Of The Development Away From The Main Road \* Bus Stop  
Directly Outside the Development \* Local Amenities – Shop/Post Office Only  
A Minutes Walk Away \* Tidy Communal Areas\* Ideal First Time/Retirement  
Opportunity \* No Onward Chain \* Offers Invited



### 3 Sylvan Court, Exeter Road, Exmouth, EX8 3NN

**THE ACCOMMODATION COMPRISES:** Communal entrance with staircase rising to first floor, front door giving access to:

**ENTRANCE HALL:** Replacement internal doors to all rooms.

**LOUNGE/DINING ROOM:** 4.62m x 3.35m (15'2" x 11'0") Double glazed window to front and side aspects gaining excellent views towards the coastline, electric living flame fire, radiator.

**KITCHEN:** 2.72m x 1.45m (8'11" x 4'9") Fitted range of patterned worktops with cupboards and drawer units, plumbing for automatic washing machine beneath, wall mounted cupboards, tiled surrounds, gas cooker point, single drainer sink unit, wall mounted gas boiler for hot water and central heating, upright larder style cupboard, double glazed window to rear aspect.

**BEDROOM:** 3.68m x 2.21m (12'1" x 7'3") plus doorway recess. Double glazed window to rear and side aspects, radiator.

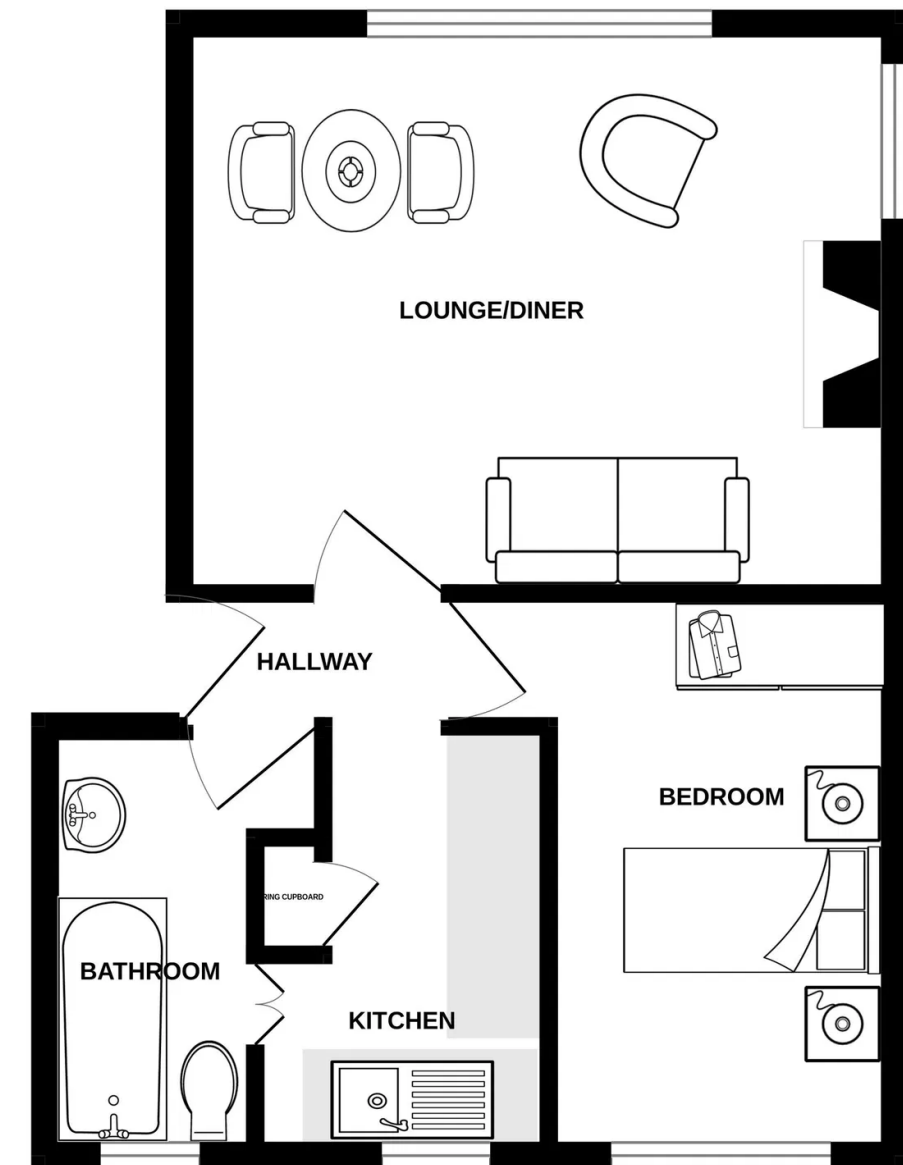
**BATHROOM/WC:** 2.44m x 1.78m (8'0" x 5'10") Bath with Mira shower over, shower curtain rail, vanity wash hand basin, WC with push button flush, chrome heated towel rail, double glazed window with patterned glass.

**OUTSIDE:** The property enjoys an allocated parking space.

**TENURE:** We understand that the property is held on a 99 year lease with approximately 79 years remaining. Service Charge: To be confirmed.

### FLOOR PLAN:

#### FIRST FLOOR



Whilst every attempt has been made to ensure the accuracy of the floorplan contained here, measurements of doors, windows, rooms and any other items are approximate and no responsibility is taken for any error, omission or mis-statement. This plan is for illustrative purposes only and should be used as such by any prospective purchaser. The services, systems and appliances shown have not been tested and no guarantee as to their operability or efficiency can be given.  
Made with Metropix ©2026