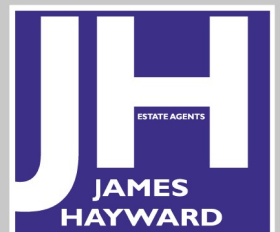




Gordon Hill | | Enfield | EN2 0QT

Asking Price £650,000



Key features

- VICTORIAN TERRACED HOUSE
- THREE GOOD SIZED BEDROOMS
- BRIGHT & AIRY RECEPTION-DINING ROOM WITH SOME ORIGINAL FEATURES
- MODERN FITTED KITCHEN
- GROUND FLOOR BATHROOM SUITE
- FIRST FLOOR ADDITIONAL WC
- GOOD SIZED GARDEN WITH PATIO AREAS & STORAGE FACILITIES
- SHORT WALK FROM EVERYDAY AMENITIES AND TRANSPORT LINKS
- CLOSE TO SOME HIGHLY REGARDED SCHOOLS
- WITHIN EASY REACH OF SPORTS & LEISURE FACILITIES AND ENFIELD TOWN CENTRE

Description

Nestled in the very appealing area of Gordon Hill, Enfield, this charming Victorian terraced house offers a perfect blend of character and modern living. Spanning an impressive 1,005 square feet, the property features three well-proportioned bedrooms, making it an ideal home for families or those seeking extra space.

Upon entering, you are welcomed into a bright and inviting reception-dining room, which serves as a perfect setting for relaxation or entertaining guests. The modern fitted kitchen is a standout feature, providing a stylish and functional space for culinary enthusiasts. The ground floor also boasts a convenient bathroom with a WC, ensuring practicality for everyday living.

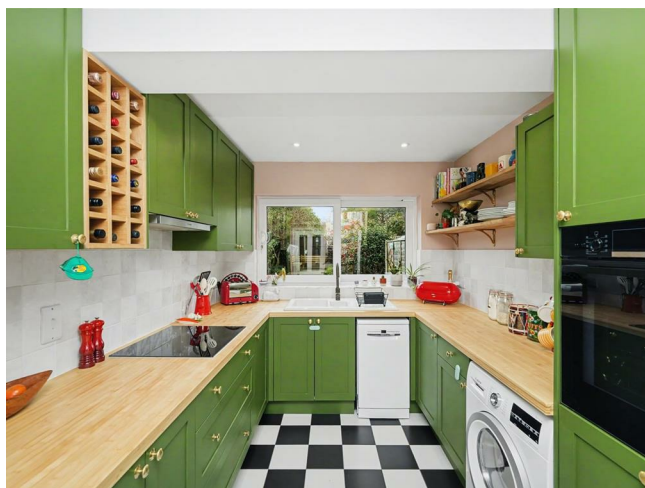
As you ascend to the first floor, you will find an additional WC, adding to the convenience of this well-designed home. The property retains its Victorian charm while offering the comforts of contemporary living, making it a truly appealing choice.

The property is complemented by a sizeable rear garden with patio areas and storage facilities and at the front of the house, there is off street parking available, a valuable asset in this sought-after location.

The surrounding area of Gordon Hill is known for its friendly community and excellent transport links, making it easy to access central London and beyond. This very attractive property, is also close to some highly regarded schools for all ages, sports & leisure facilities, green spaces and an abundance of other amenities for your every day living needs. Enfield Town centre is also within easy reach.

This characterful and beautifully presented, three-bedroom terraced house is a wonderful opportunity for those looking to settle in a vibrant neighbourhood while enjoying the comforts of a modern home. Do not miss the chance to make this alluring property your own.

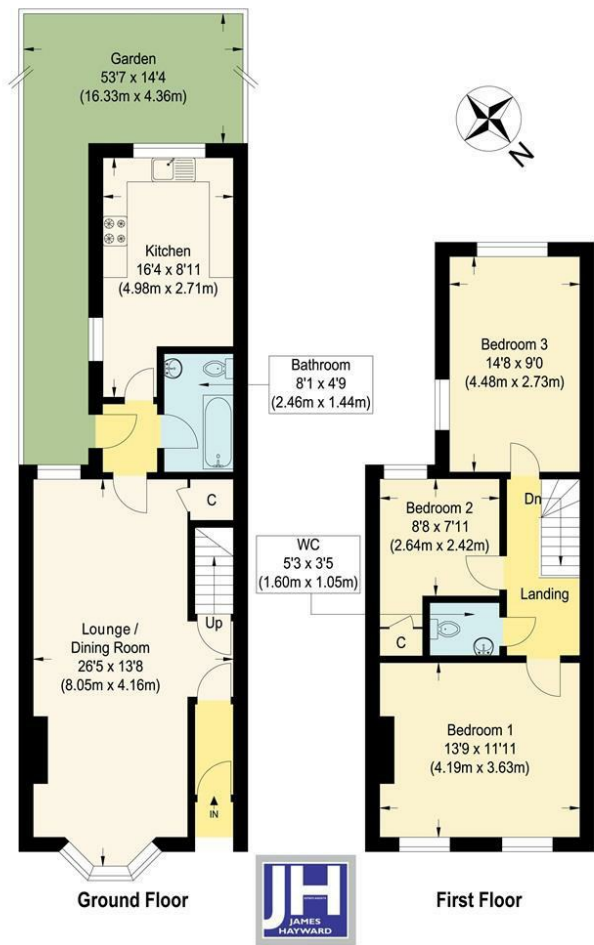
Directions



A beautifully presented, Victorian terraced home, offering sizeable living accommodation including three bedrooms, reception-dining room, modern fitted kitchen, bathroom suite and an additional WC on the first floor. This attractive home is ideally situated on Gordon Hill, Enfield and is walking distance from an abundance of local amenities and transport links; schools for all ages are close by as are numerous sports & leisure facilities. A treasure of a home in a vibrant community that is too good to miss

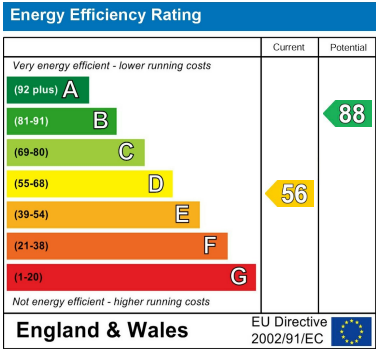


Floor plans



Gordon Hill

Approximate Gross Internal Floor Area : 93.40 sq m / 1005.34 sq ft
Illustration for identification purposes only, measurements are approximate, not to scale.



181 Chase Side
Enfield
Greater London
EN2 0PT
020 8367 4000
sales@james-hayward.com
James-Hayward.com