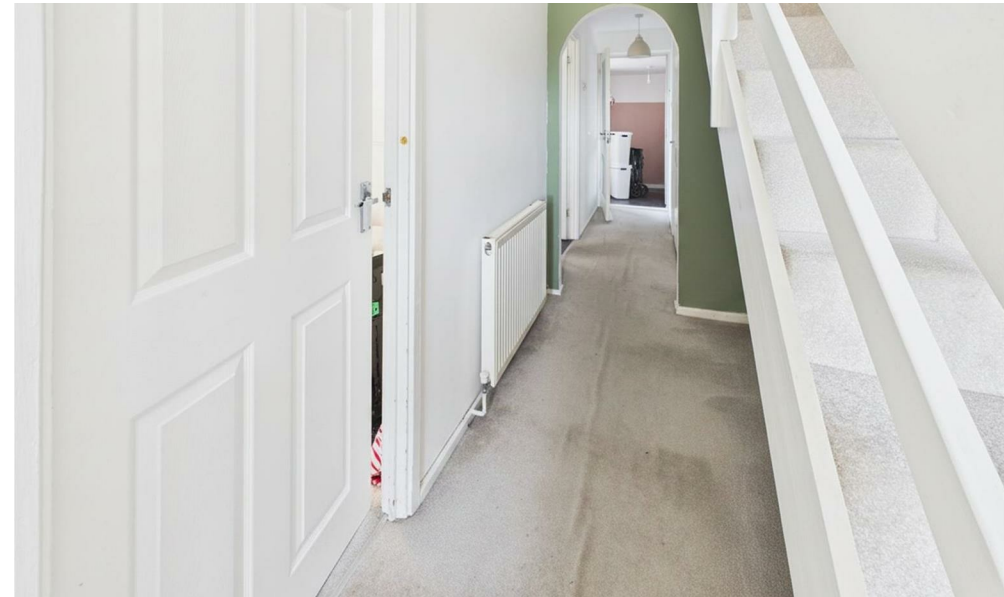


Ripon Road, Stevenage, Hertfordshire, SG1 4NA.  
Asking Price £325,000



Ripon Road, Stevenage, Hertfordshire, SG1 4NA.

Council Tax Band: C

A three bedroom end of terrace home which is offered with vacant possession and benefits from a good sized living room along with a kitchen/dining room, downstairs WC and utility room. Upstairs are three good sized bedrooms and a family bathroom.

Within a short drive there are both a Budgens and Sainsbury supermarket, Shell petrol station with a range of extra amenities and good access to the A1(M).

### **Entrance Hall**

11'8 x 5'9 (3.56m x 1.75m)

Double glazed front door into the entrance hall, radiator, stairs to the first floor, built in storage cupboard, doors into the living room, kitchen/dining room and utility room.

### **Living Room**

16'7 x 10'4 (5.05m x 3.15m)

Double glazed window to the front aspect, door to the kitchen/dining room, dado rail.

### **Kitchen/Dining Room**

16'11 x 9'5 (5.16m x 2.87m)

Two double glazed windows to the rear aspect, fitted with a range of wall and base units, built in electric oven and gas hob with chimney hood over, tiled splashbacks and flooring, built in storage cupboard.

### **Utility Room**

8'2 x 7'4 (2.49m x 2.24m)

Double glazed door to the rear garden, plumbing for a washing machine and dishwasher, fridge/freezer space, tiled flooring.

### **Downstairs WC**

5'4 x 2'8 (1.63m x 0.81m)

Double glazed opaque window, low level WC, vanity wash hand basin,

### **Landing**

8'9 x 6'11 (2.67m x 2.11m)

Doors to all of the rooms, loft access, airing cupboard, storage cupboard.

### **Bedroom One**

13'7 x 9'6 (4.14m x 2.90m)

Double glazed window to the rear aspect, radiator, built in storage cupboard.

### **Bedroom Two**

10'11 x 10'4 (3.33m x 3.15m)

Double glazed window to the front aspect, radiator.

### **Bedroom Three**

8'4 x 7'3 (2.54m x 2.21m)

Double glazed window to the front aspect, radiator, built in storage cupboard.

### **Bathroom**

6'6 x 5'5 (1.98m x 1.65m)

Double glazed opaque window to the rear aspect, panel enclosed bath with shower over, pedestal wash hand basin, low level WC, heated chrome towel rail, tiled flooring and splashbacks.

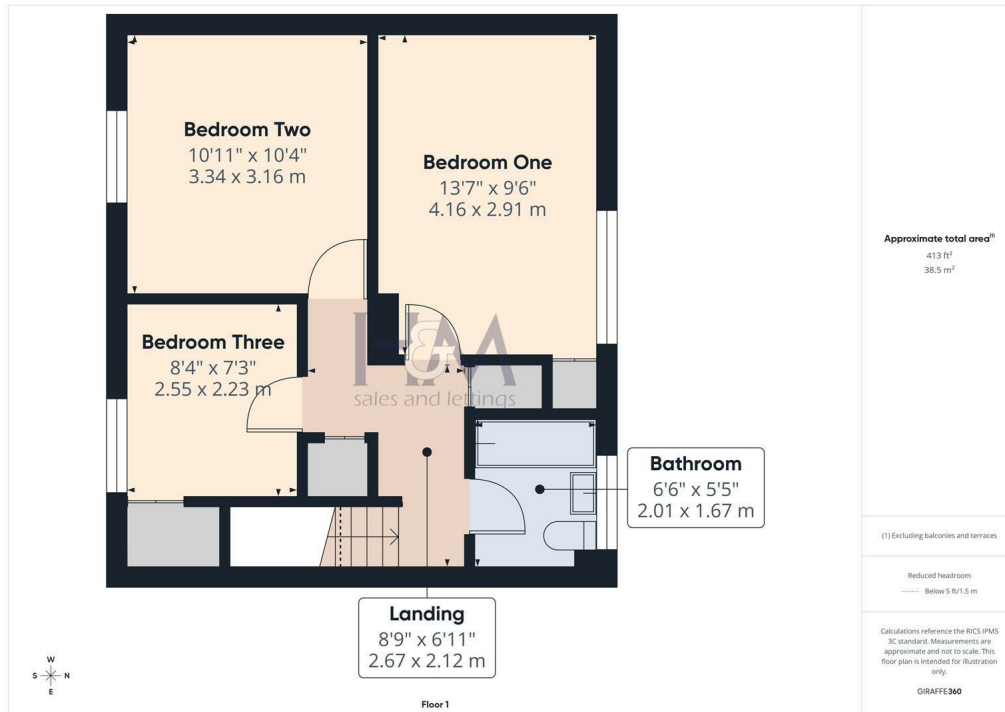
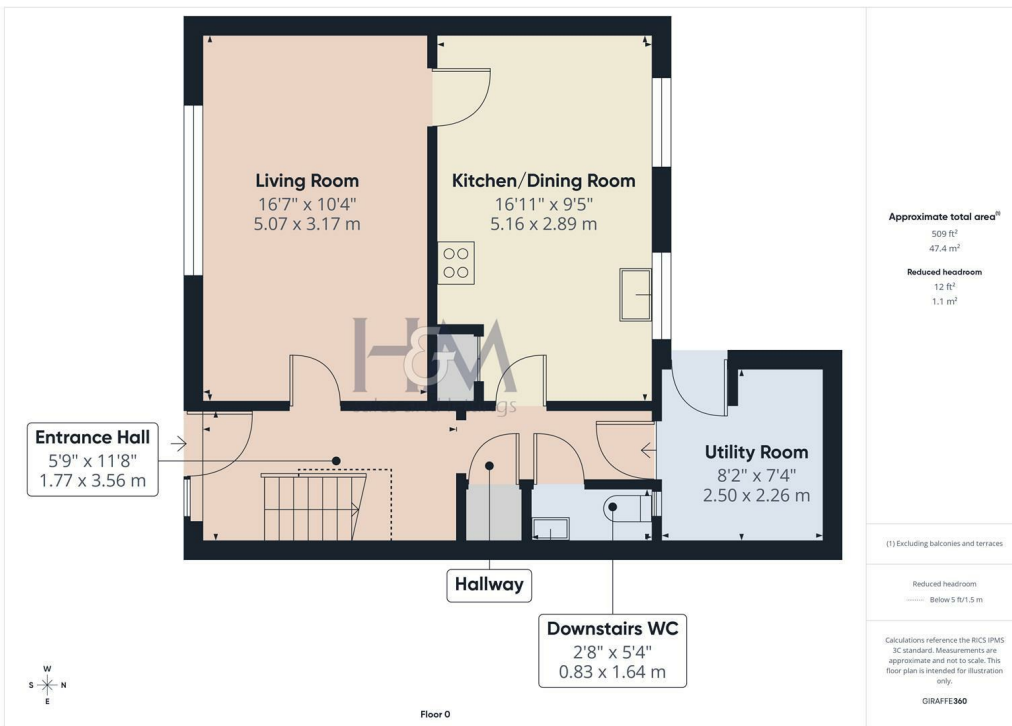
### **Frontage**

Path to the front door, timber fencing small lawned area.

### **Rear Garden**

Decked area leading down to the rear gate, lawned areas, timber fencing, outside tap.





Homes and Mortgages  
86 High Street  
Stevenage  
Hertfordshire  
SG1 3DW  
01438 728444

stevenage@homesandmortgages.co.uk

