



LYHAM ROAD, SW2

£500,000

- Maisonette
- Private entrance
- Two bedrooms
- Open plan living
- Shared garden
- Energy rating: C





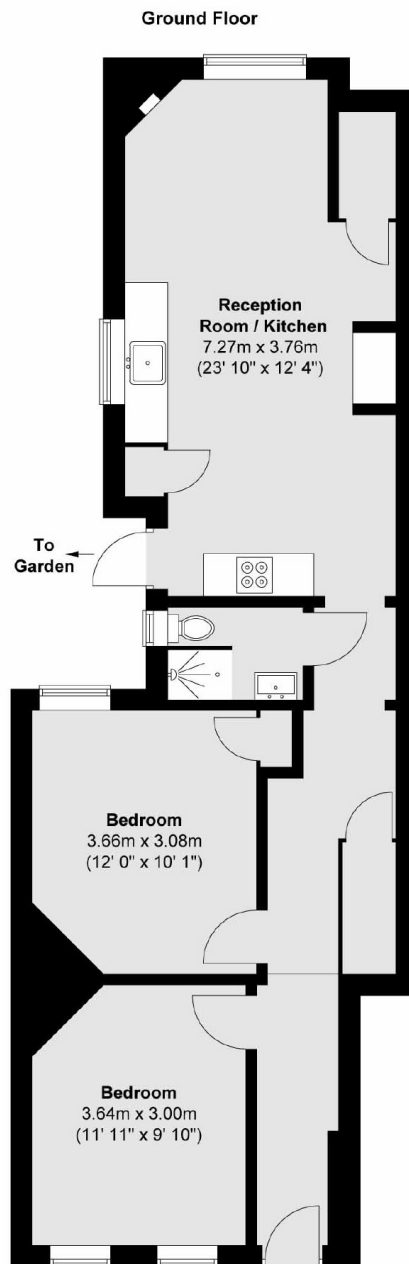
ABOUT THE HOME

A beautifully presented, thoughtfully configured ground floor maisonette with two double bedrooms, offered to the market chain free.

Lyham Road is approximately a mile from Brixton Underground station (Victoria Line) and a similar distance from Clapham South Underground station (Northern Line). Fantastic bus links can be found on Brixton Hill, a five minute walk from the property.







Total area (approx.) : 66.9 sq. m (720 sq. ft)

JACKSONS CLAPHAM

73 Abbeville Road, London,
SW4 9JN
Sales: 020 8487 3177
Lettings: 020 8487 3178

Energy Rating: C We aim to make our particulars both accurate and reliable. However they are not guaranteed; nor do they form part of an offer or contract. If you require clarification on any points then please contact us, especially if you're traveling some distance to view. Please note that appliances and heating systems have not been tested and therefore no warranties can be given as to their good working order.