



g

Kenchester, Hereford

Guide Price £635,000

g
GLASSHOUSE

Kenchester, Hereford

Affectionately known by the local children as the prettiest house in Kenchester, The Crossing is an Enchanting, Characterful, Period Property which has been extended, and more recently renovated and fully updated to provide a Beautiful Detached 3 Bedroom Single Storey Home, tucked away in an idyllic private rural setting on the edge of Kenchester, with uninterrupted countryside views, landscaped gardens and a striking open-sided gazebo for year-round entertaining.

Kitchen/Breakfast Room: A country-style kitchen with character and functionality, featuring new wooden double-glazed windows, new tiles, and two Belfast sinks—one overlooking the rear garden. Units have been extended to provide additional storage, including under the fireplace and beside the sink. Appliances include a Neff oven and Smeg gas burner (LPG). The ceiling retains the original laundry maid, and there's space for laundry appliances and a fridge/freezer. A full-height pantry offers additional storage.

Sitting Room: A bright and spacious central living area with updated feature and spot lighting, oak flooring, and a newly installed slate hearth beneath a wood-burning stove. French doors open onto the garden alongside a large picture window framing countryside views. Bespoke built-in alcove seating and cupboards provide stylish storage, and all glazing has been replaced to meet modern regulations.





Bedroom 1: A stylish main bedroom with vaulted ceiling, deep blue feature wall, pendant lighting, engineered wood flooring and a newly fitted window overlooking the rear garden. The room has also been rewired and redecorated. Plumbing is in place for a potential ensuite conversion if desired.

Dressing Room: Created by removing a stud wall, this space now offers an entire wall of bespoke fitted wardrobes and storage, finished in teal with complementary blinds. A new wooden floor and double-glazed window complete the space.

Bedroom 2: Reconfigured from a former utility room, this bright bedroom now features new oak flooring, insulation, redecorated walls and a sliding barn door. A picture window replaces an old external door, and the room benefits from upgraded glazing and a newly levelled floor.



Bathroom: Smartly updated with regouted walls and flooring, mosaic tiles, and a P-shaped bath with electric shower. A decorative floral wallpaper adds character, and a discreet access panel has been installed into the pantry wall for plumbing maintenance.



The property is approached via a wide gravelled driveway, recently raised by 18 inches, with newly created turning space and parking bays. A timber-framed carport with cladding and glazing sits to the side of the house, while a detached garage/workshop with power provides further storage or workspace.



The grounds have undergone extensive landscaping to include a Japanese-style gravel front garden, a wildlife pond visited by kingfishers, and a large rear lawn interspersed with trees and flowering borders. A bespoke timber gazebo provides a sheltered entertaining area with countryside views framed by circular cut-outs and timber slatted walls.



Raised vegetable beds, stock fencing to the rear boundary, and further fencing repairs enhance the practicality of the outside space. Two newly fitted gates provide secure access – one to the front and one beside the dining room. The roof has been repointed and an external Worcester Bosch oil-fired combi boiler and new oil tank installed. LPG remains connected for the hob.

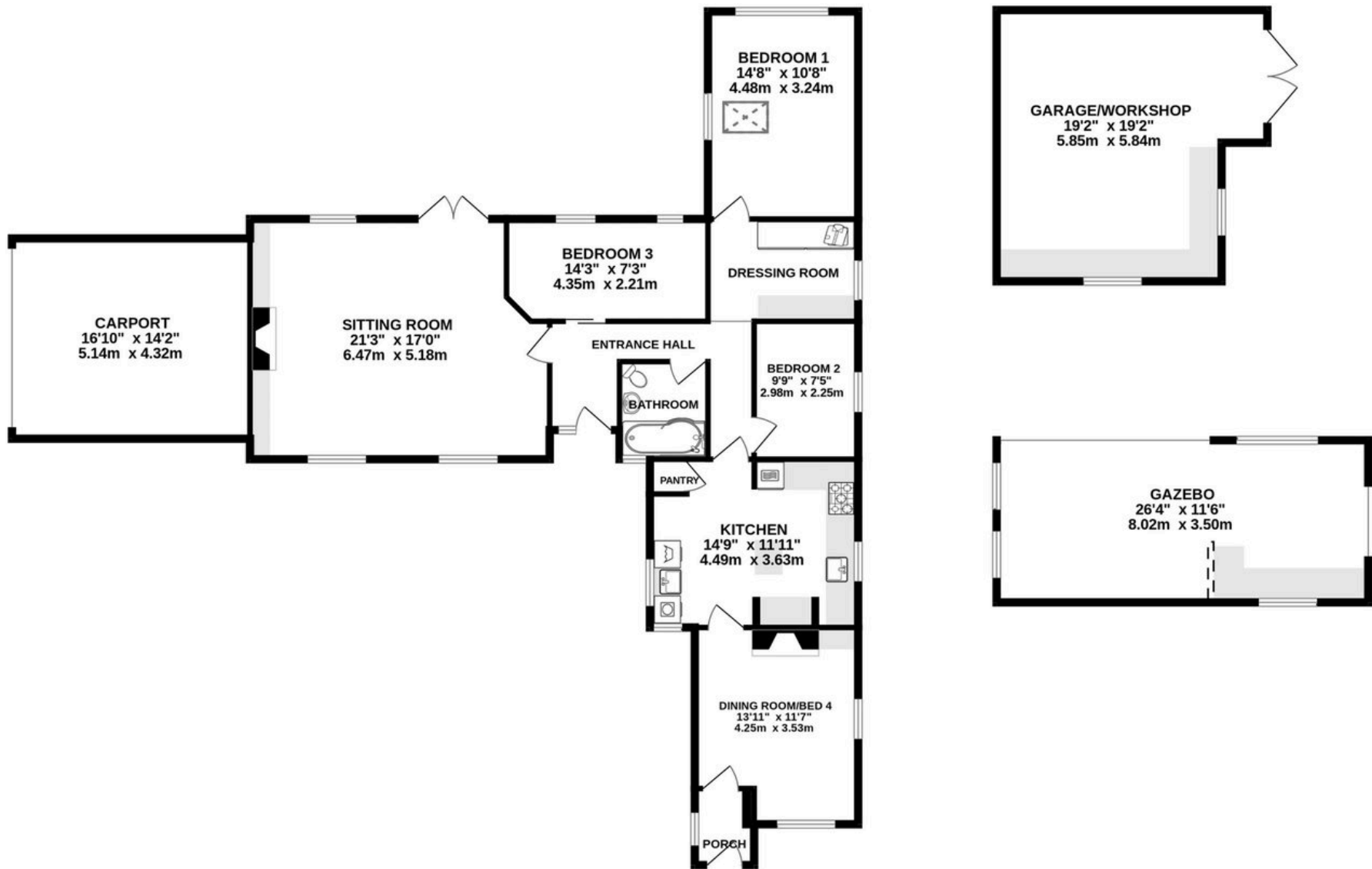


Offering just over 1,400 sq.ft. of light-filled living accommodation, with the addition 700 sq.ft of outbuildings this enchanting period home has been carefully remodelled to combine character and warmth with contemporary style. Features include a large dual aspect sitting room with French doors to the rear garden, three comfortable bedrooms, plus a dressing room, a generous country kitchen with two Belfast sinks, and a versatile additional reception/bedroom. Extensive renovations by the current owners include new oak flooring, windows, heating and redecoration throughout, kitchen and bathroom updates, along with an external oil-fired combi boiler and substantial landscaping works to breathe new life into this home.

The Crossing enjoys a highly private position at the very end of a quiet country lane, surrounded by farmland and open green space. Originally for the Station Master of Credenhill Station and his wife, who used to operate the old Crossing Gates, for the now decommissioned Hay/Brecon railway line, the home retains its historic charm with feature windows typical of the era, exposed brick fireplaces, vaulted ceilings and timber framed windows now enhanced by thoughtful upgrades. The landscaped garden design cleverly zones spaces for growing, relaxing, and entertaining – all while taking in the panoramic outlook across rolling Herefordshire countryside.

Although a hidden rural gem, The Crossing is still close to an array of essential amenities. Credenhill is just a mile away with shops, food outlets and the new addition of the French restaurant L'Ecole des Amis. In the opposite direction, just a mile away is Timothy & Birch, the homewares, coffee shop and casual eatery, then a further two miles is Oakchurch Farm shop with fresh local meat, vegetables, clothing, home goods and a well-stocked garden centre, not forgetting their renowned Ice Cream Shack. Sainsbury's and Waitrose are a short distance away close to Hereford City which is just 5 miles away with an array of eateries and riverside walks, dining and the full city amenities you'd expect.





TOTAL FLOOR AREA : 2084 sq ft (193.6 sq m) approx

