



Zummerleaze  
13 Havelins, Stourpaine, Blandford Forum, Dorset

Zummerleaze  
13 Havelins  
Stourpaine  
Blandford Forum  
Dorset DT11 8TH



- Edge of village location
- Close to countryside
- Spacious accommodation
  - Nice size plot
  - Garage & driveway
- For sale by INFORMAL TENDER
- Closing Date 12 noon 12 May 2026

Guide Price  
Guide Price £475,000

Freehold

Blandford Forum Sales  
01258 452670  
[blandford@symondsandsampson.co.uk](mailto:blandford@symondsandsampson.co.uk)



## ACCOMMODATION

A good size bungalow with a wrap around garden situated in an edge of village location. The heart of the home is the dual aspect sitting dining room, with a part vaulted ceiling, feature fireplace and French doors leading to the private rear garden. The kitchen comprises of a range of wall and base units set with a counter top and space for white goods. The conservatory provides access to a utility room with storage and space for white goods and access to the garage.

The main bedroom is a generous room and includes an ensuite shower room. The second bedroom is a good size double and includes a comprehensive range of built in storage. The third bedroom includes built in storage. Completing the accommodation is a shower room, comprising of a shower, basin and w.c.

## OUTSIDE

The property is approached by wooden gates leading to a driveway with parking for several vehicles and access to the garage. Both front and rear gardens enjoy a good degree of privacy with established plants and trees.

## SITUATION

The amenities in Stourpaine include a public house and

parish church. This popular village is set within the Stour Valley just 2 miles North of Blandford Forum. Blandford Forum is an interesting market town with a range of shopping, commercial and sporting facilities. Salisbury is 22 miles (approx.) with a main line station to London Waterloo. The coast is easily accessible. Located on a bus route, the Saxon hilltop town of Shaftesbury is 9 miles, whilst Poole and Bournemouth are 17 and 23 (approx.) miles respectively. There are excellent schools locally in both the private and public sectors to include Knighton House Prep School and Durweston Primary School, The Blandford School, Bryanston School, Milton Abbey and Clayesmore.

## METHOD OF SALE

13 Havelins is being offered for sale by Informal Tender closing date 12 noon on Tuesday 12 May 2026. Please forward offers in writing to blandford@symondsandsampson.co.uk or Symonds and Sampson LLP, 7 Market Place, Blandford, Dorset, DT11 7AH

## DIRECTIONS

what3words///bulk.majoring.control

## SERVICES

Mains electricity, water and drainage. Air source heat pump and solar panels and battery storage.

## MATERIAL INFORMATION

Dorset Council Tax Band - E

Tel: 01305 211 970

EPC- D

There is broadband and mobile coverage in the area, please refer to Ofcom's website for more details.

[https://www.ofcom.org.uk/phones-telecoms-and-](https://www.ofcom.org.uk/phones-telecoms-and-internet/advice-forconsumers/advice/ofcom-checker)

[internet/advice-forconsumers/advice/ofcom-checker](https://www.ofcom.org.uk/phones-telecoms-and-internet/advice-forconsumers/advice/ofcom-checker)

Please refer to the government website for more details.

<https://www.gov.uk/check-long-term-flood-risk>

The property previously flooded in 2013 but has not been affected since.

Spray foam insulation is in the loft space.



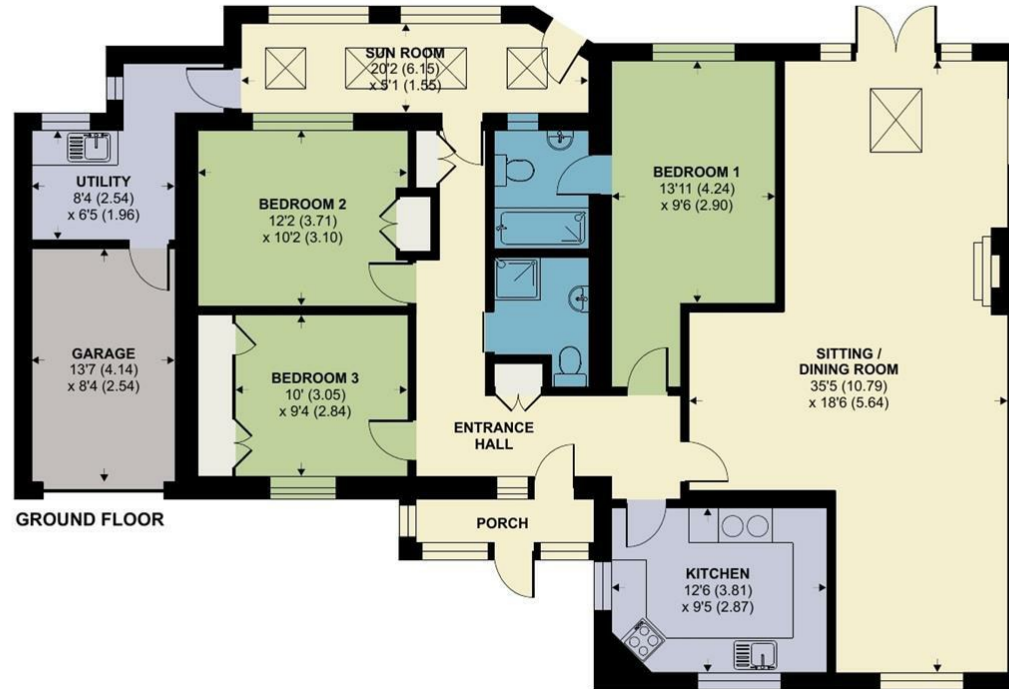
Energy Efficiency Rating		Current	Potential
The energy efficiency class (letter) ranges from A (most efficient) to G (least efficient).			
A	B	C	D
E	F	G	
Energy Efficiency Rating		55	60
England & Wales			



# Havelins, Stourpaine, Blandford Forum

Approximate Area = 1682 sq ft / 156.2 sq m (includes garage)

For identification only - Not to scale



Floor plan produced in accordance with RICS Property Measurement 2nd Edition, Incorporating International Property Measurement Standards (IPMS2 Residential). © nichecom 2026. Produced for Symonds & Sampson. REF: 1434794



Blandford/DJP/April 2026

Revised May 2026



01258 452670

blandford@symondsandsampson.co.uk  
Symonds & Sampson LLP  
7, Market Place,  
Blandford, Dorset DT11 7AH



Important Notice: Symonds & Sampson LLP and their Clients give notice that: 1. They have no authority to make or give any representations or warranties in relation to the property. These particulars do not form part of any offer or contract and must not be relied upon as statements or representations of fact. 2. Any areas, measurements or distances are approximate. The text, photographs and plans are for guidance only and are not necessarily comprehensive. It should not be assumed that the properties have all necessary planning, building regulation or other consents and Symonds and Sampson LLP have not tested any services, equipment of facilities. 3. We have not made any investigation into the existence or otherwise of any issues concerning pollution of the land, air or water contamination and the purchaser is responsible for making his/her own enquiries in this regard. 4. The property is sold subject to and with the benefit of all existing wayleaves, easements and rights of way whether public or private, specifically mentioned or not. The vendors shall not be required to define any such rights, privileges or advantages.

**SALES | LETTINGS | AUCTIONS | FARMS & LAND | COMMERCIAL | NEW HOMES | PLANNING & DEVELOPMENT**