



67 Larksfield, Englefield Green, TW20 0RA

£395,000

## 67 Larksfield, Englefield Green, TW20 0RA

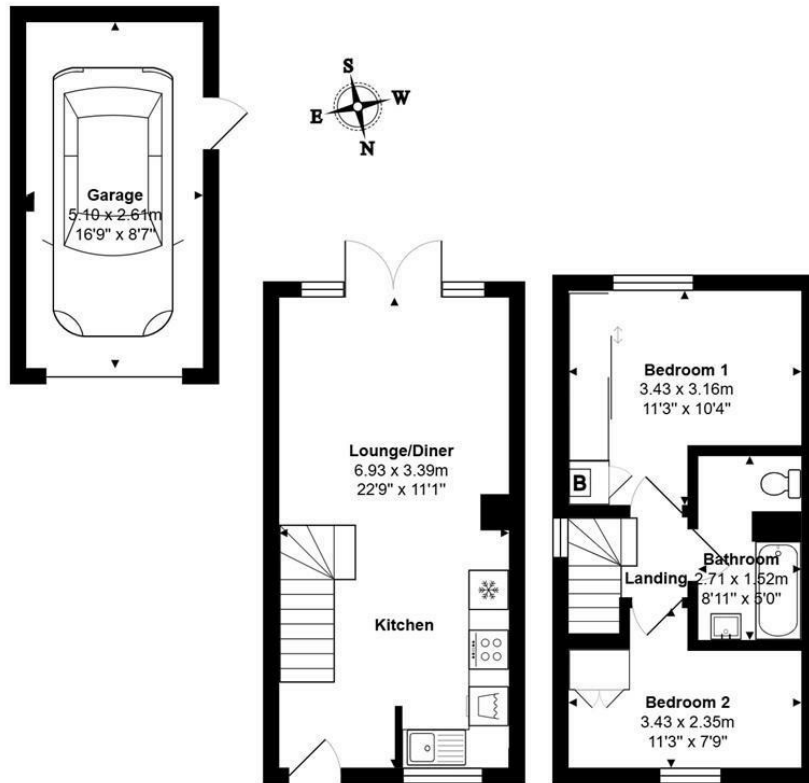
This End of Terrace is a fine example of one of these popular houses built around 1983 within a short walk of Windsor Great Park and the village shops. Egham's excellent shopping area & train station (Waterloo approx. 40 minutes) are about 1 mile or so away and there is an excellent bus service to Staines, Heathrow and Windsor. For those commuting by road J13 of the M25 is a 5-6 minute drive, which gives easy access to the M3, M4 & M40.

We feel this property will suit either a first time buyer, or downsizer and will tick a lot of boxes for most buyers. There is a good size open plan lounge/kitchen/diner with double doors onto the secluded rear garden, which has a gate for easy access to Windsor Great Park and a side door into the garage which has light & power and good storage potential in the roof space. There are two bedrooms, the master of which has fitted wardrobes, and a white bathroom suite upstairs; the property has gas central heating to radiators and double glazed windows and doors. The garage to the side with personal access to the side and rear garden is a definite bonus!

EPC Rating: TBC.



# Floor Plan



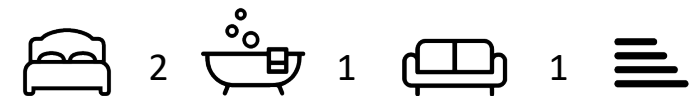
Total Area: 60.6 m<sup>2</sup> ... 652 ft<sup>2</sup>



## Features

- End Terrace House
- Lounge/Diner
- Upstairs Bathroom
- Double Glazing
- Garage with Storage
- Two Bedrooms
- Open-Plan Kitchen
- Gas Central Heating
- Southerly Garden
- No Onward Chain

10 St Judes Road, Englefield Green, Surrey TW20 0BY  
 Tel 01784 433696  
 sales@aspenestateagents.co.uk



Tenure - Freehold Council Tax Band - D

