



HOLLAND PARK GARDENS, W14

£875,000

Two bedroom
Communal gardens
Wooden flooring
Modern
Prime location
Contemporary bathroom

@marshandparsons
marshandparsons.co.uk

MARSH &
PARSONS



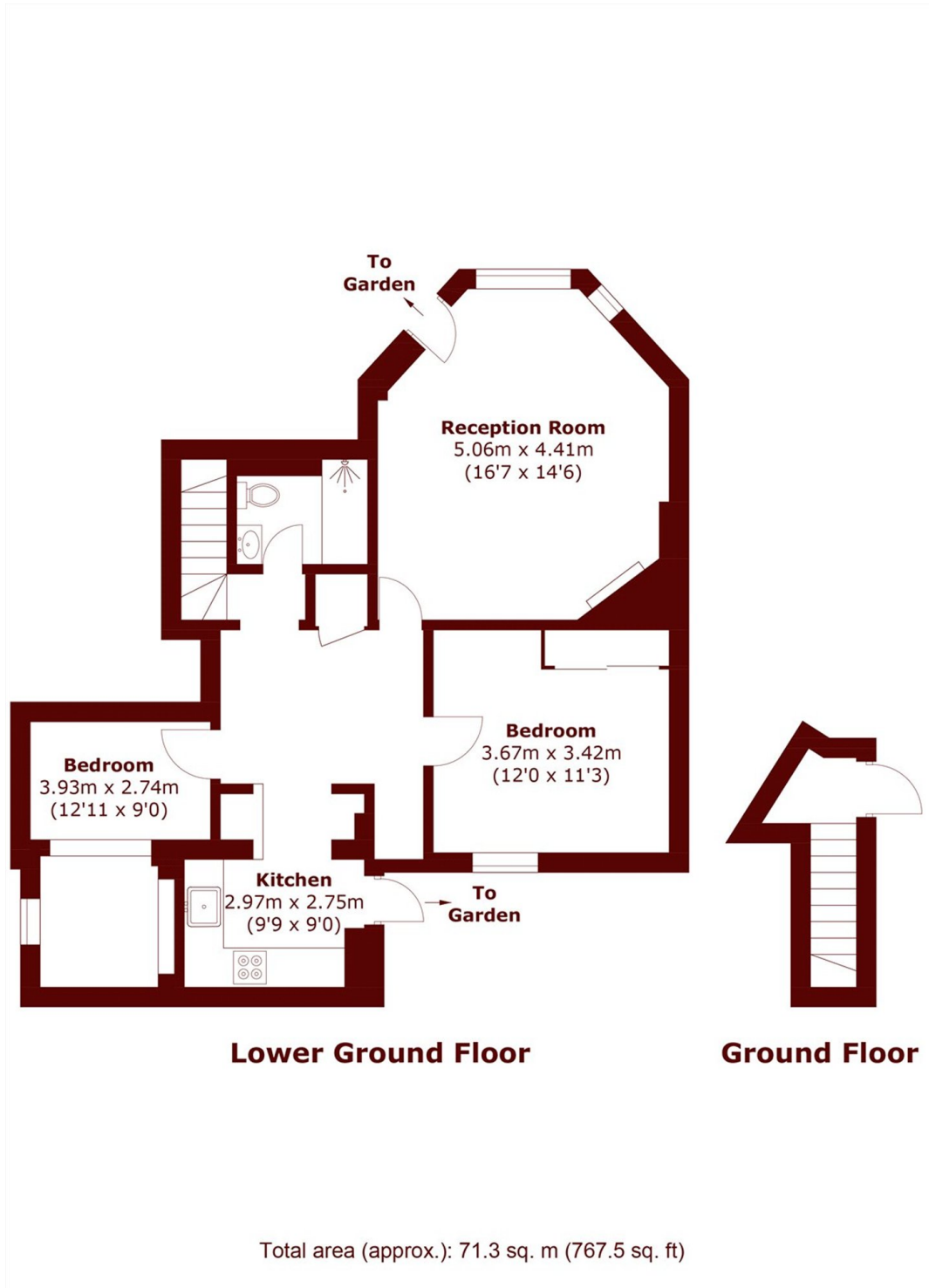
ABOUT THE PROPERTY

A wonderfully spacious two double bedroom apartment on Holland Park Gardens offering practical living space with access to communal gardens at the rear. The apartment offers a lovely bright and airy reception room with wooden floors, modern and fully equipped kitchen, two double bedrooms and a contemporary bathroom.

Holland Park Gardens is a short stroll from the local amenities of Holland Park Avenue, Westfield and Holland Park Tube station.



STEP INSIDE HOLLAND PARK GARDENS



Holland Park
020 7605 6890

Energy Rating: C We aim to make our particulars both accurate and reliable. However, they are not guaranteed; nor do they form part of an offer or contract. If you require clarification on any points then please contact us, especially if you're traveling some distance to view. Please note that appliances and heating systems have not been tested and therefore no warranties can be given as to their good working order

MARSH &
PARSONS