



ALLSOP PLACE MARYLEBONE, NW1

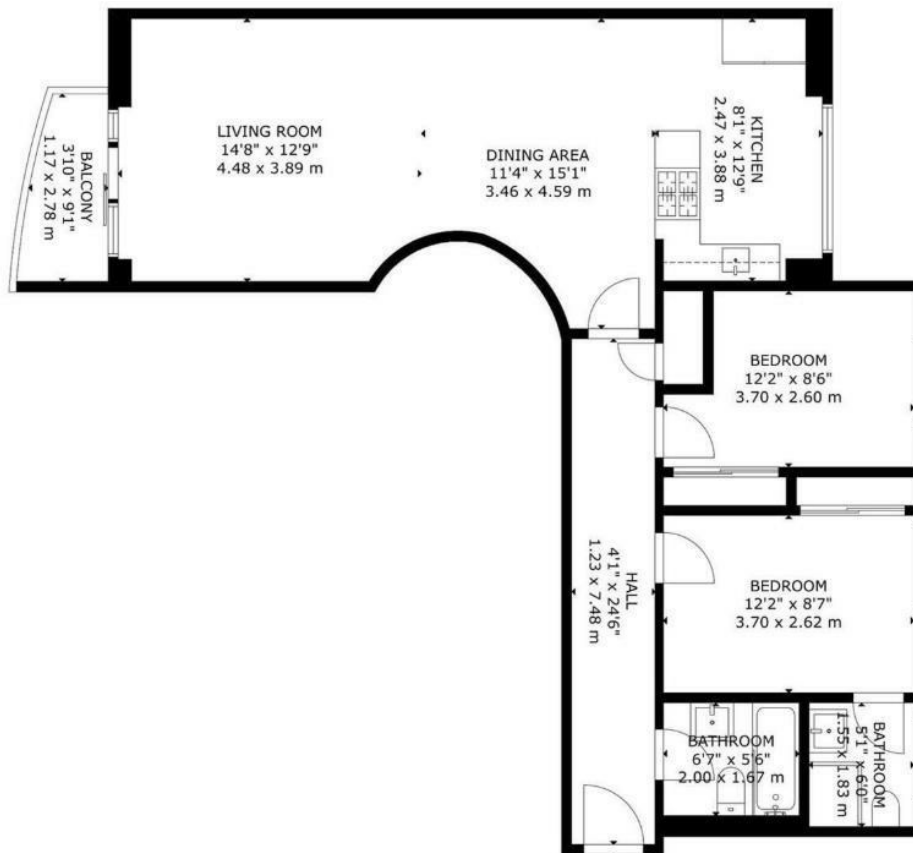
£5,200 PER MONTH

Located in the extremely popular building of Cornwall House, a portered purpose built block located on Allsop Place ideally located within short walking distance to Baker Street Tube Station (Jubilee Line), Baker Street amenities, Chic Marylebone High Road, Oxford Street and various transport links.

The flat is offered in immaculate condition throughout and boasts a spacious reception room, fully fitted kitchen, 2 double bedrooms and 2 bathrooms (one en-suite).

Close to Regents university. Viewings are highly recommended.

PMP | INTERNATIONAL



GROSS INTERNAL AREA
 TOTAL: 80 m²/860 sq.ft
 SECOND FLOOR: 80 m²/860 sq.ft
 EXCLUDED AREAS: BALCONY: 3 m²/34 sq.ft
 SIZE AND DIMENSIONS ARE APPROXIMATE, ACTUAL MAY VARY



Energy Efficiency Rating		
	Current	Potential
Very energy efficient - lower running costs		
(92 plus) A		
(81-91) B		
(69-80) C		
(55-68) D		
(39-54) E		
(21-38) F		
(1-20) G	1	1
Not energy efficient - higher running costs		
England & Wales	EU Directive 2002/91/EC	

Agents Note: Whilst every care has been taken to prepare these particulars, they are for guidance purposes only. All measurements are approximate and are for general guidance purposes only and whilst every care has been taken to ensure their accuracy, they should not be relied upon and potential buyers/tenants are advised to recheck the measurements

London
 PMP International
 94 Belsize Lane
 Belsize Park
 London
 NW3 5BE

020 7701 2878
 info@pmpi.co.uk
 www.pmpi.co.uk

PMP | INTERNATIONAL