
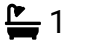



Colmonell, Towyn Road, Conwy, LL22 9ER

Offers In Region Of £220,000

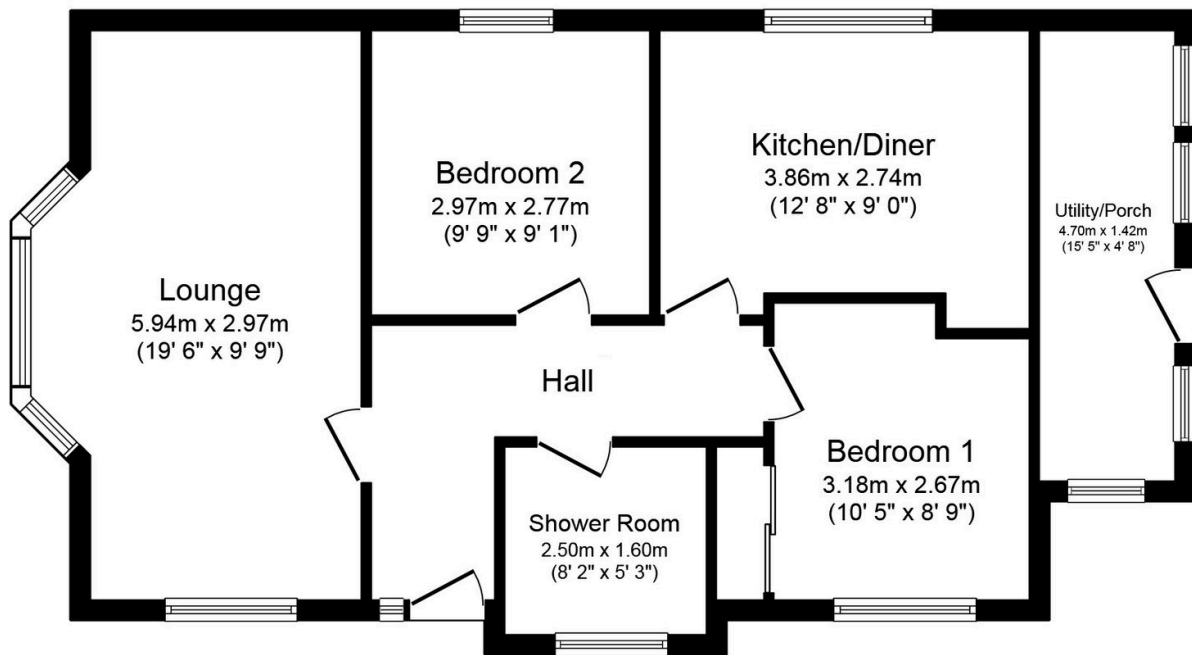
 2
  1
  1



A well presented detached bungalow in the heart of the coastal resort of Towyn, set in a most generous level plot and with so much potential. This property offers spacious accommodation including a large lounge, a well fitted kitchen plus side utility porch, two double bedrooms and a modern shower room. A real feature of this bungalow is the plentiful outside space which is fully enclosed with manicured lawns, flower borders, an outbuilding incorporating a garage and separate workshop together with two block paved driveways which offer a substantial parking area. Viewing is strictly by appointment with the agent and there is no forward chain.

Key Features

- Central resort location
- Regular bus services
- Double glazing
- Large corner plot
- Council Tax band - C
- Close to local shops and the beach
- Gas central heating
- Two bedrooms
- Detached outbuilding
- EPC rating - D



Floor Plan

Total floor area 67.6 m² (727 sq.ft.) approx

This plan is for illustration purposes only and may not be representative of the property. Plan not to scale. Powered by PropertyBox