



Byron Mews

South End Green, NW3

£5,750 per month
(£1,326.92 per week)

A delightful 4 bedroom terraced house over 3 floors with front and rear garden and off street parking in this secure gated development in South End Green. Accommodation comprises a reception room with direct access to the terrace/garden, fully fitted kitchen, guest cloakroom, large master bedroom with en-suite bathroom and a further double bedroom on the first floor leading to the top floor with a further two double bedrooms and bathroom.

CHESTERTONS



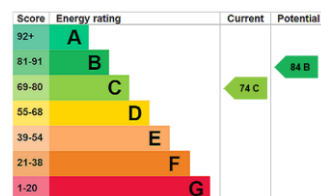
Byron Mews

South End Green, NW3

- Delightful Terraced Family House in Private Gated Development
- 4 Bedrooms, 2 Bathrooms, Reception, Fully Fitted Kitchen
- Garden, Small Terrace, Off Street Parking for 2 Cars
- Situated Close to Amenities of South End Green and Hampstead Heath (Overground,) Walking Distance to Hampstead and Belsize Park (Northern Lines)



Deposit Required: £7,961.54
Local Authority: London Borough Of Camden
Council Tax Band: G
EPC Rating: C
Unfurnished

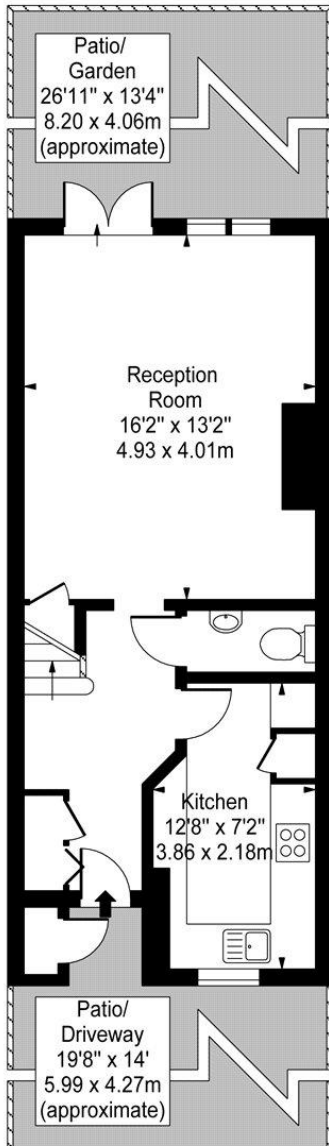
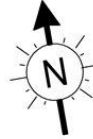


Chestertons Hampstead Lettings

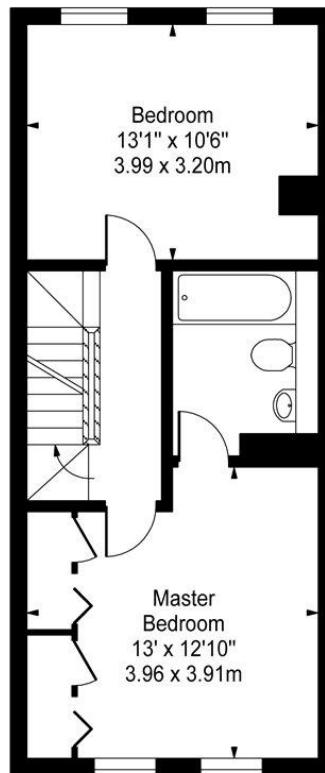
55-56 Hampstead High Street
Hampstead
London
NW3 1QH
hampsteadlettingsusers@chestertons.co.uk
02077941125
chestertons.co.uk

Additional tenant charges apply (fees apply to non-AST tenancies only)
Tenancy Agreement Fee: £300
References per Tenant/Guarantor: £60
Inventory check (approx. £100 – £250 inc. VAT)
[chestertons.co.uk/property-to-rent/applicable-fees](https://www.chestertons.co.uk/property-to-rent/applicable-fees)

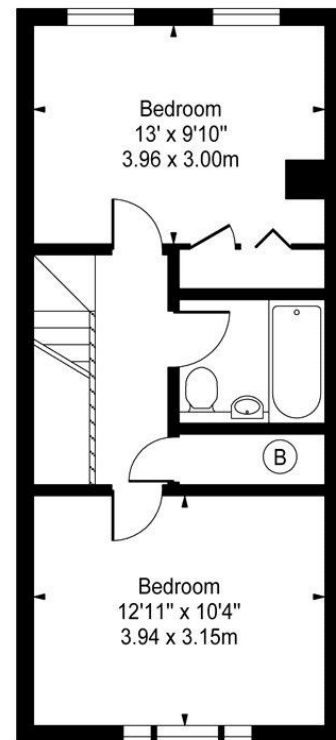
**Byron Mews,
South End Green, NW3**



Ground Floor



First Floor



Second Floor

Approx Gross Internal Area 1240 Sq Ft - 115.20 Sq M

For Illustration Purposes Only - Not To Scale

www.goldlens.co.uk

Ref. No. 011919E

