



Singer Mews, SW4

£375,000

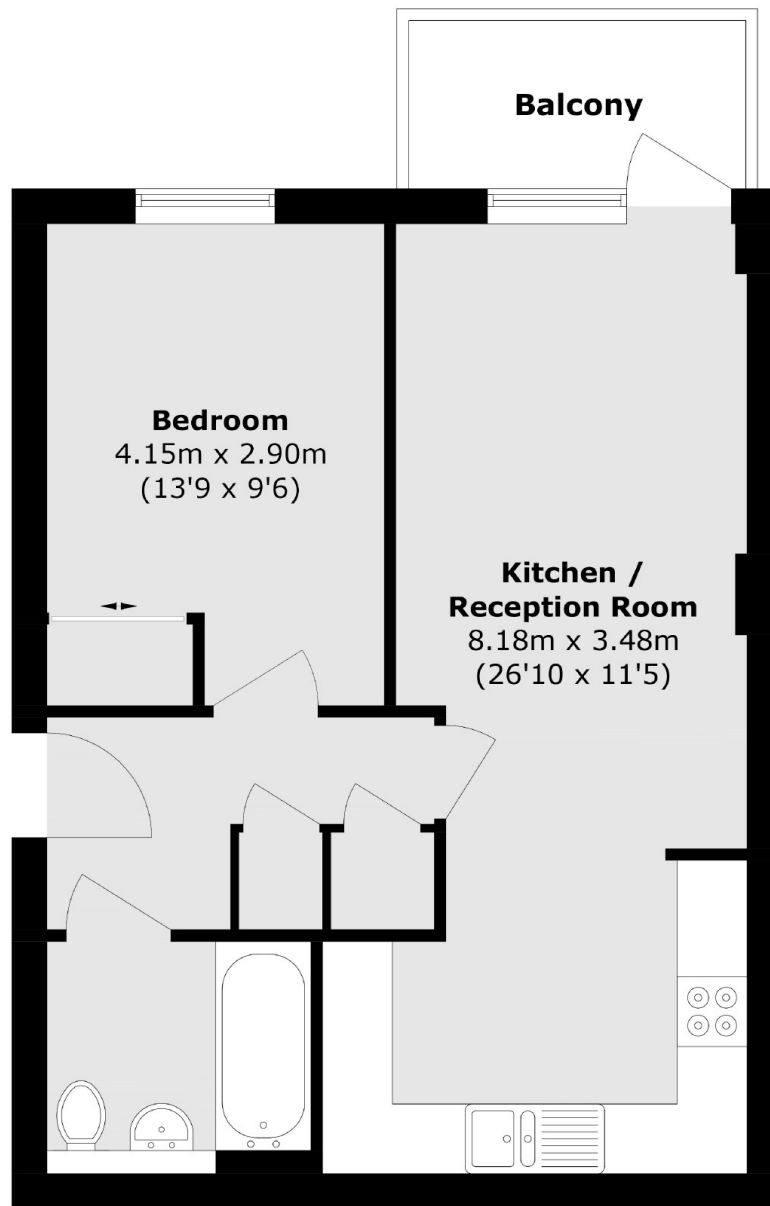
A stylish, purpose built apartment located within a desirable, gated development. Comprising a spacious reception room, a modern kitchen, modern bathroom and double bedroom with storage. The property also includes a large balcony and is EWS1 compliant and includes an allocated parking space.

Singer Mews is situated moments from the many shops, restaurants and cafés of Clapham Old Town & Clapham High Street. Clapham North & Stockwell Underground stations are a very short walk away.

Features

- Private Gated Development
- Reception Room
- Modern Kitchen
- Large Double Bedroom
- Large Balcony
- EWS1 compliant

Singer Mews, London, SW4



Total area (approx.): 49.2 sq. m (529.5 sq. ft)

Balcony area (approx.): 4.2 sq. m (45.2 sq. ft)