



## Cumberland Mansions

Brown Street, Marylebone, W1H 5ZA

£1,500 Per Week

An exceptionally spacious three double bedroom with three en-suites apartment situated on the FIRST FLOOR (with lift) within this smart Mansions building (with renewed common part) close to Marble Arch (underground station), Park Lane, Hyde Park and Oxford Street; also Paddington station.

This property comprises of:- Wide entrance hallway, large fitted kitchen (with door to small balcony) and dining room, excellent reception room with high ceilings and plenty of light, three double bedrooms, each with its own en-suite bathroom/WC and include a guest WC.

This fine property also benefits from having wooden flooring in the main living rooms and kitchen/diner, high ceilings throughout, lift access, secure entry and onsite caretaker.

It is available NOW, furnished for long let, an ideal home for family or sharers.

- Three Double Bedrooms
- Three Bathrooms
- First Floor
- Spacious flat
- Gas Central Heating

### Viewing

Please contact our Messila Residential Office on 020 7586 6699 if you wish to arrange a viewing appointment for this property or require further information.





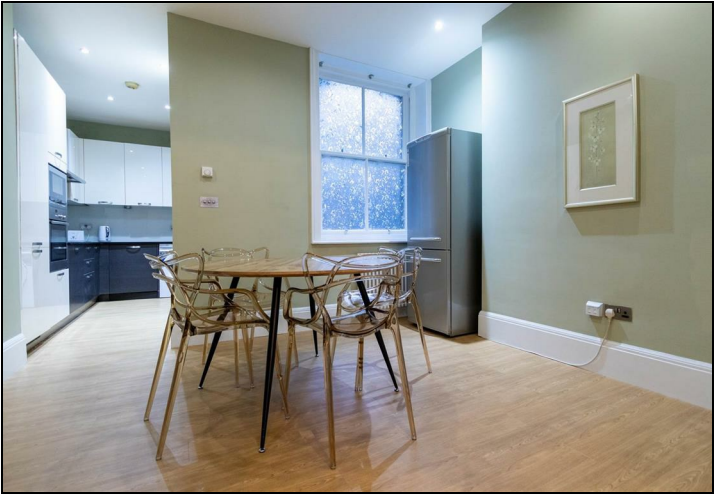
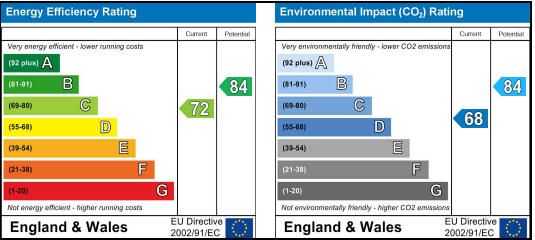
Floor Plan



Area Map



Energy Efficiency Graph



These particulars, whilst believed to be accurate are set out as a general outline only for guidance and do not constitute any part of an offer or contract. Intending purchasers should not rely on them as statements of representation of fact, but must satisfy themselves by inspection or otherwise as to their accuracy. No person in this firms employment has the authority to make or give any representation or warranty in respect of the property.