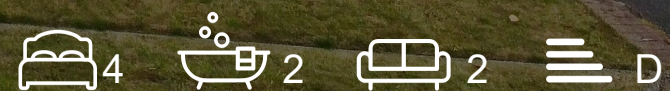


# Location



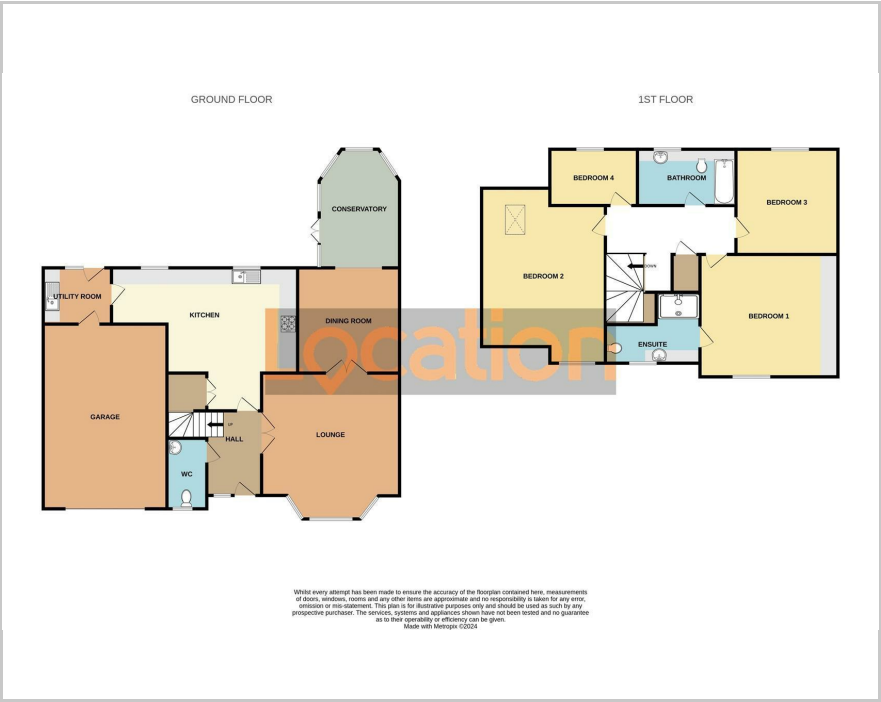
15 Fonton Hall Drive, Sutton-In-Ashfield, NG17 1LD

Offers In The Region Of £425,000





Floor Plan



Area Map



These particulars, whilst believed to be accurate are set out as a general outline only for guidance and do not constitute any part of an offer or contract. Intending purchasers should not rely on them as statements of representation of fact, but must satisfy themselves by inspection or otherwise as to their accuracy. No person in this firms employment has the authority to make or give any representation or warranty in respect of the property.

13-15 Albert Street, Mansfield, NG18 1EA  
Tel: 01623654555 Email: enquires@locationmansfield.co.uk www.locationstateagency.co.uk

Accommodation

- Executive Detached Family Home
- Four Bedrooms, Ensuite and Family Bathroom
- Modern Kitchen with Intregrated Appliances
- Kitchen/Diner, Lounge, Dining, Conservatory, Utility and WC
- Gardens to the Front and Rear, Driveway and Double Garage
- Summer House
- Generously Proportioned Plot
- Viewing Highly Recommended

Viewing

Please contact our Mansfield Sales Office on 01623654555 if you wish to arrange a viewing appointment for this property or require further information.

Energy Efficiency Graph

