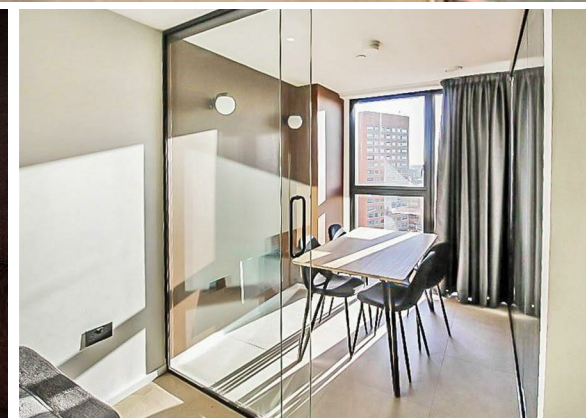
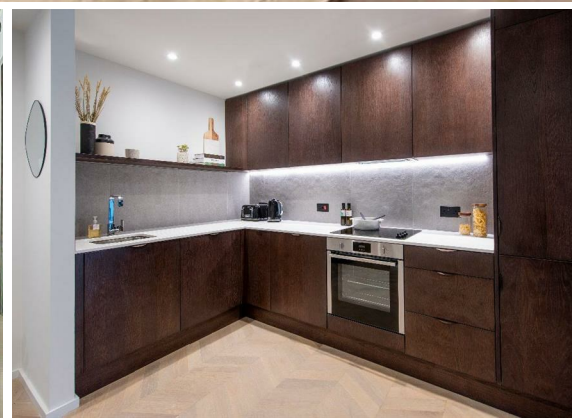




**1 Bed
Apartment
located in 1A
Spinners Way**

£1,150 PCM



 **NPP
RESIDENTIAL**

ST GEORGE'S GARDENS - APARTMENT 1A

TYPICAL LAYOUT



With unrivalled views over the Grade II listed church from which its name is derived, this stunning new Castlefield development offers a luxurious approach to city centre living.

Living/Dining/Kitchen - 5.889m x 3.118m
Winter Garden - 2.500m x 2.103m
Bedroom - 5.086m x 2.537m
Bathroom - 2.398m x 1.457m
Utility - 0.908m x 1.522m

There are some instances where ceiling heights may vary. Please enquire for more information on this.

All measurements taken from the widest point in a room.

ST GEORGE'S GARDENS
 PHASE 4

DIRECTIONS

CONTACT

22 Lloyd Street
 Manchester
 M2 5WA

E: info@nppresidential.co.uk
 T: 0161 639 0059
<https://nppresidential.co.uk/>

www.detrafford.com

DETRAFFORD

EPC Rating: B
Council Tax Band: D

