



9&10 Lower Alma Street, Trowbridge, Wiltshire, BA14 7EY

£1,300 Per Month



- Three bedroom home
- EPC - D
- Long term let
- Council Tax - C

Discover Trowbridge: Wiltshire's County Town with a Rich Heritage and Modern Appeal

As the county town of Wiltshire, Trowbridge combines historic character with a modern lifestyle. Once at the heart of England's woollen cloth industry, the town has evolved into a thriving community with excellent transport links and diverse amenities.

Local Amenities and Lifestyle

Trowbridge offers a bustling town centre featuring both well-known high-street names and independent retailers. Residents enjoy an excellent range of cafes, restaurants, and traditional pubs, along with leisure options such as The Shires Shopping Centre, Trowbridge Town Park, and the Trowbridge Civic Centre, which hosts regular performances, markets, and community events.

THE PROPERTY

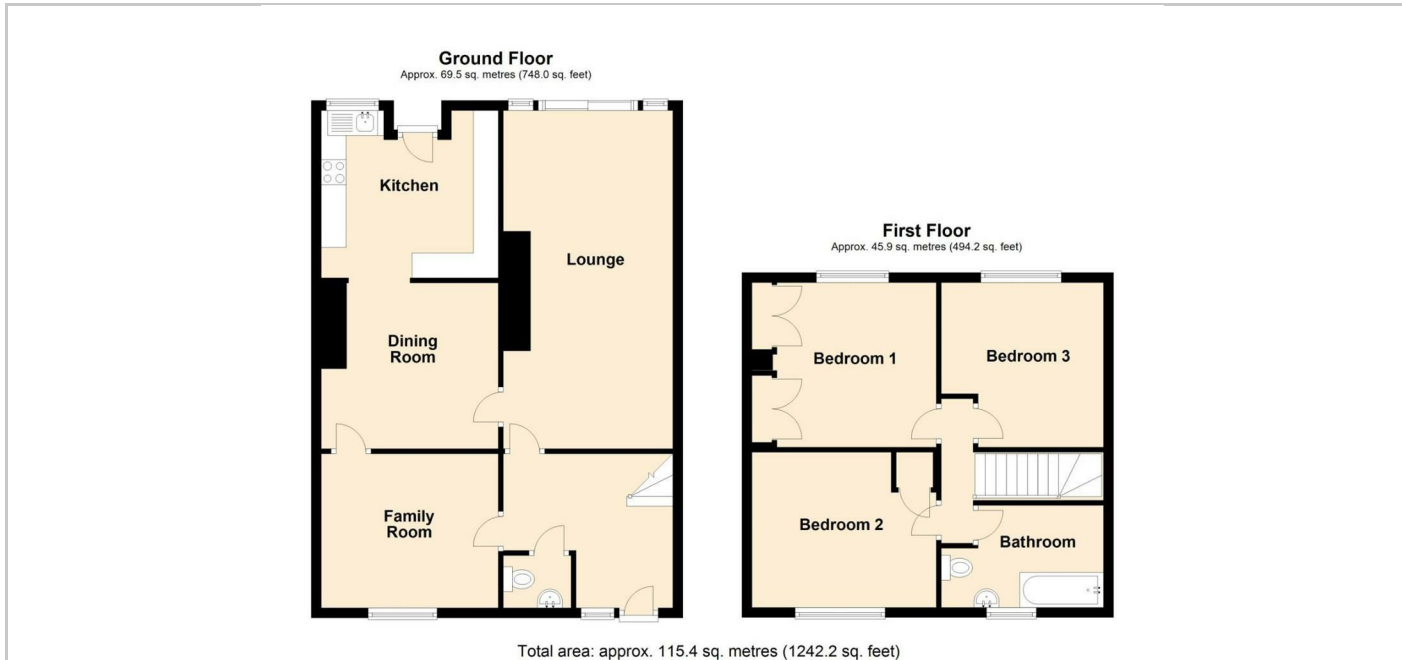
Blueleaf Property are delighted to offer this three bedroom mid terrace home in Lower Alma Street, Trowbridge.

The ground floor accommodation comprises entrance hall, cloakroom, family room, lounge (stepped down from entrance hall), dining room and kitchen on same level as the lounge. The first floor accommodation comprises landing, three double bedroom and a family bathroom.

The property further benefits from gas central heating, upvc double glazing and front and rear gardens. Parking for around 3 vehicles to the rear dependant on size.

The landlord would prefer a longer term let.
The landlord would prefer no pets.

All room measurements are approx;
 Entrance Hall: 3.09m x 1.94m ext 3.40m
 Cloakroom: 1.46m x 1.15m
 Family Room: 3.11m x 3.55m
 Dining Room: 3.32m x 3.55m
 Kitchen: 3.05m x 3.47m
 Lounge: 3.40m x 6.78m
 Bedroom One: 3.53m x 3.31m
 Bedroom Two: 3.53m x 3.14m
 Bedroom Three: 3.47m x 2.38m ext 3.40m
 Bathroom: 2.13m x 3.44m



SITUATION

Directions