



FULHAM PALACE ROAD, SW6

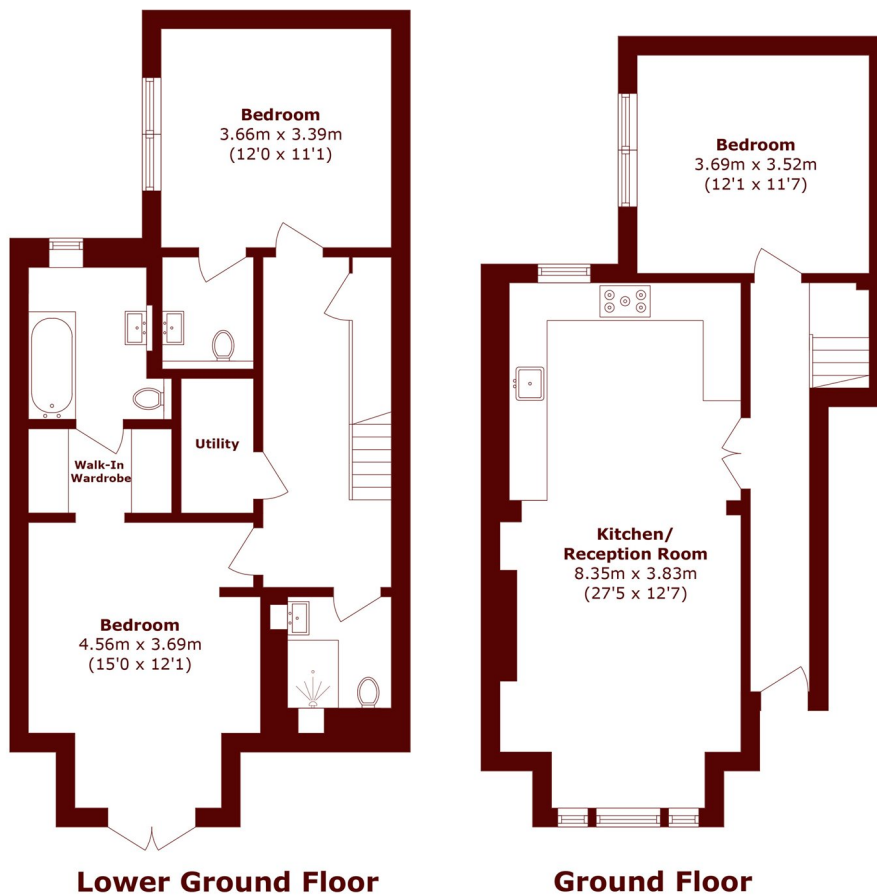
£775,000

This renovated and extended split-level apartment offers over 1200 sq.ft of accommodation and benefits from no onward chain.

Three double bedrooms
New kitchen
Large double reception

Two bathrooms
Excellent transport links
Long lease

STEP INSIDE FULHAM PALACE ROAD



Total area (approx.): 111.8 sq. m (1203.4 sq. ft)

Bishops Park
020 7993 9888

Energy Rating: D We aim to make our particulars both accurate and reliable. However, they are not guaranteed; nor do they form part of an offer or contract. If you require clarification on any points then please contact us, especially if you're traveling some distance to view. Please note that appliances and heating systems have not been tested and therefore no warranties can be given as to their good working order

**MARSH &
PARSONS**