

abbotFox

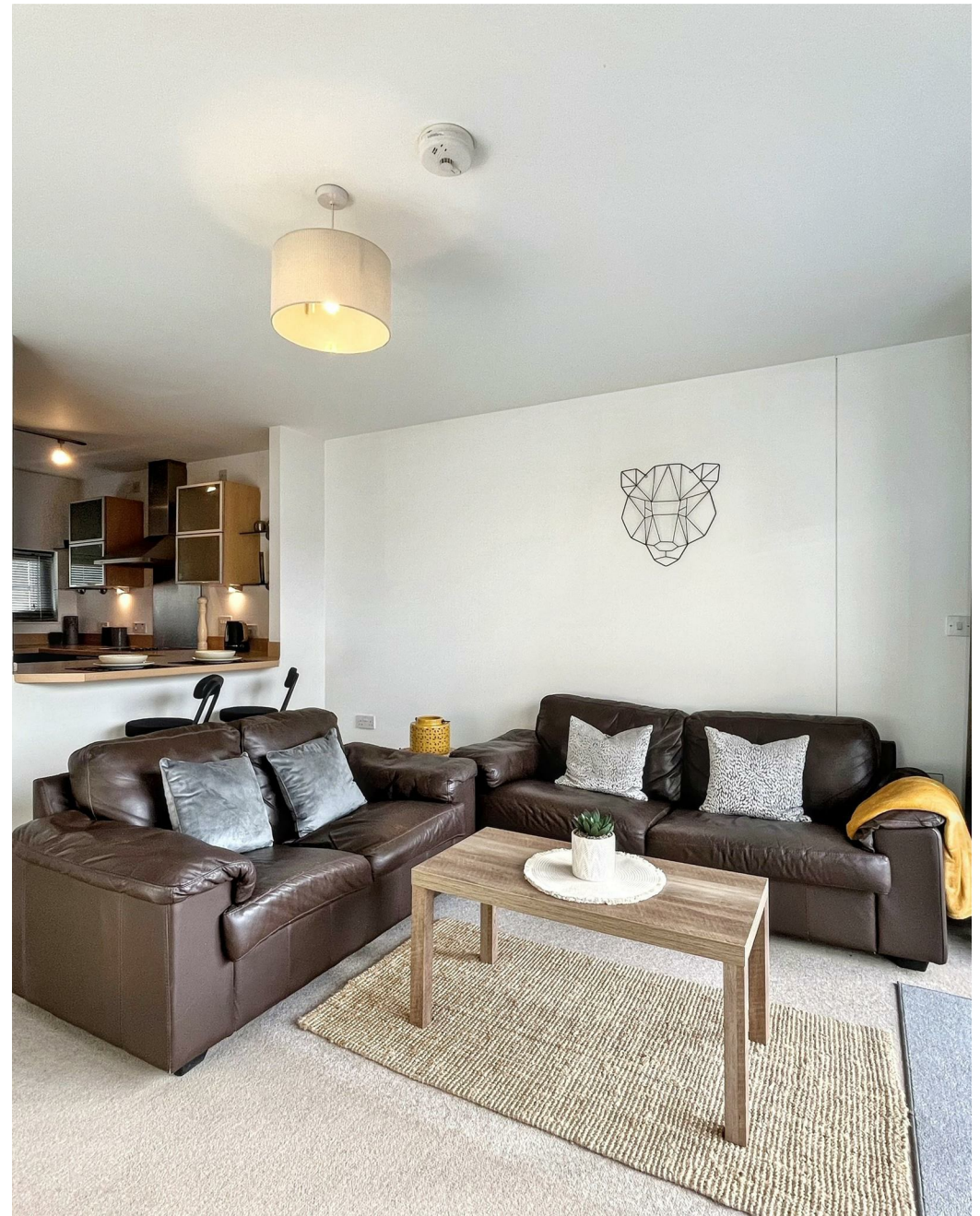


Riverside, NR1
£195,000

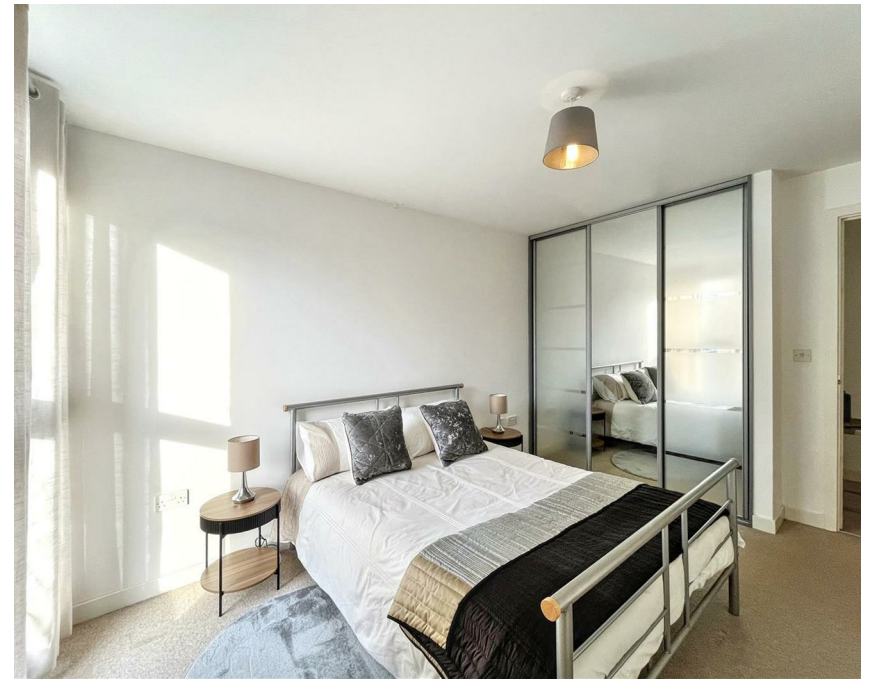
“

We are a team of genuine individuals who hold a deep passion for both property and marketing. Collectively, we bring over 70 years of experience in the property market of Norfolk and Suffolk. Our affection for both counties runs deep, and we are enthusiastic about sharing our passion with you.

Colin McKenzie | **Branch Partner**







THE DETAIL_____

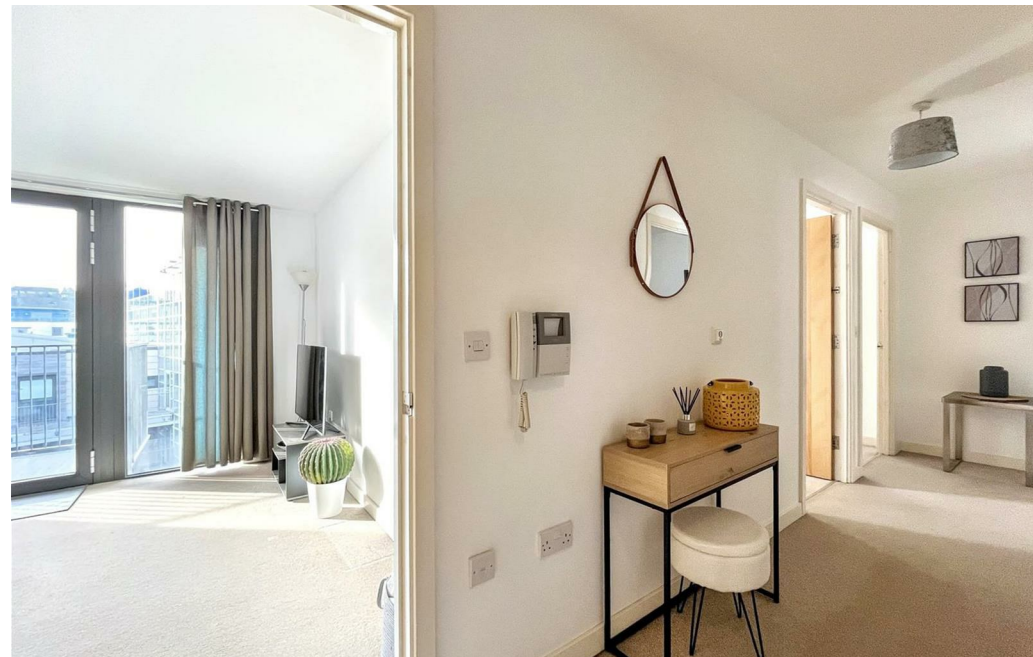
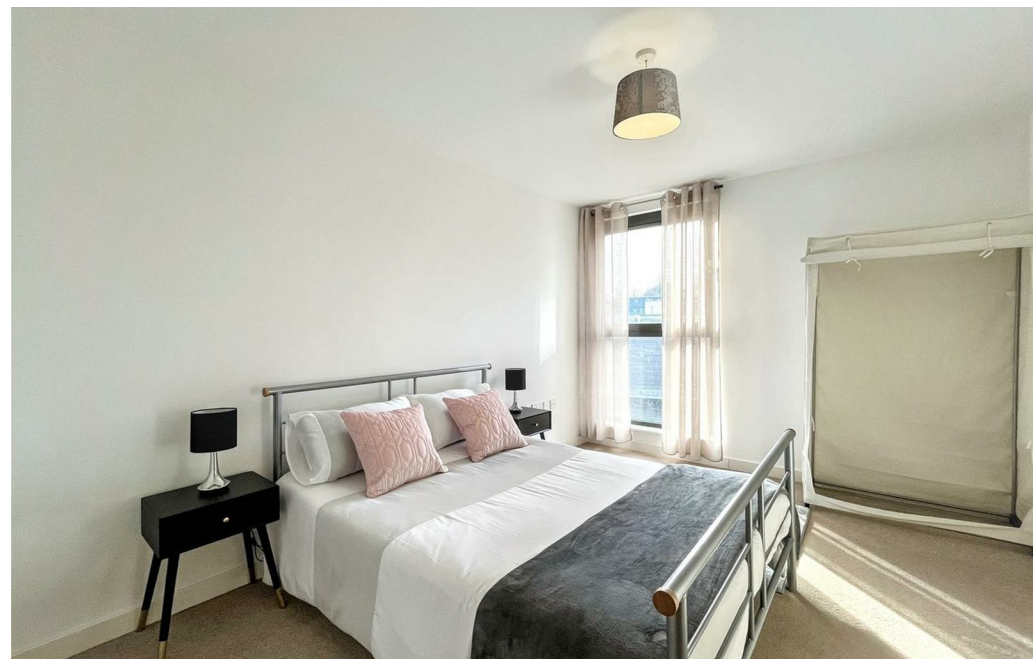
abbotFox presents this stylish two bedroom apartment, perfectly positioned within the popular Ashman Bank development, offering attractive riverside living just moments from Norwich city centre.

The property offers well proportioned accommodation throughout, with a light and spacious open plan living area forming the heart of the home. The sitting and dining space flows into a modern fitted kitchen, creating an ideal environment for both everyday living and entertaining. Access to a private balcony provides a pleasant outlook and an ideal spot to unwind.

Both bedrooms are generous doubles, with the principal bedroom benefitting from fitted storage. A contemporary bathroom completes the accommodation.

Further highlights include secure entry, lift access, allocated parking and well maintained communal areas. The development is ideally located within easy reach of Riverside retail and leisure facilities, Norwich train station and the city centre, making this an excellent opportunity for owner occupiers or investors alike.

An internal viewing is highly recommended to appreciate the location and lifestyle on offer.



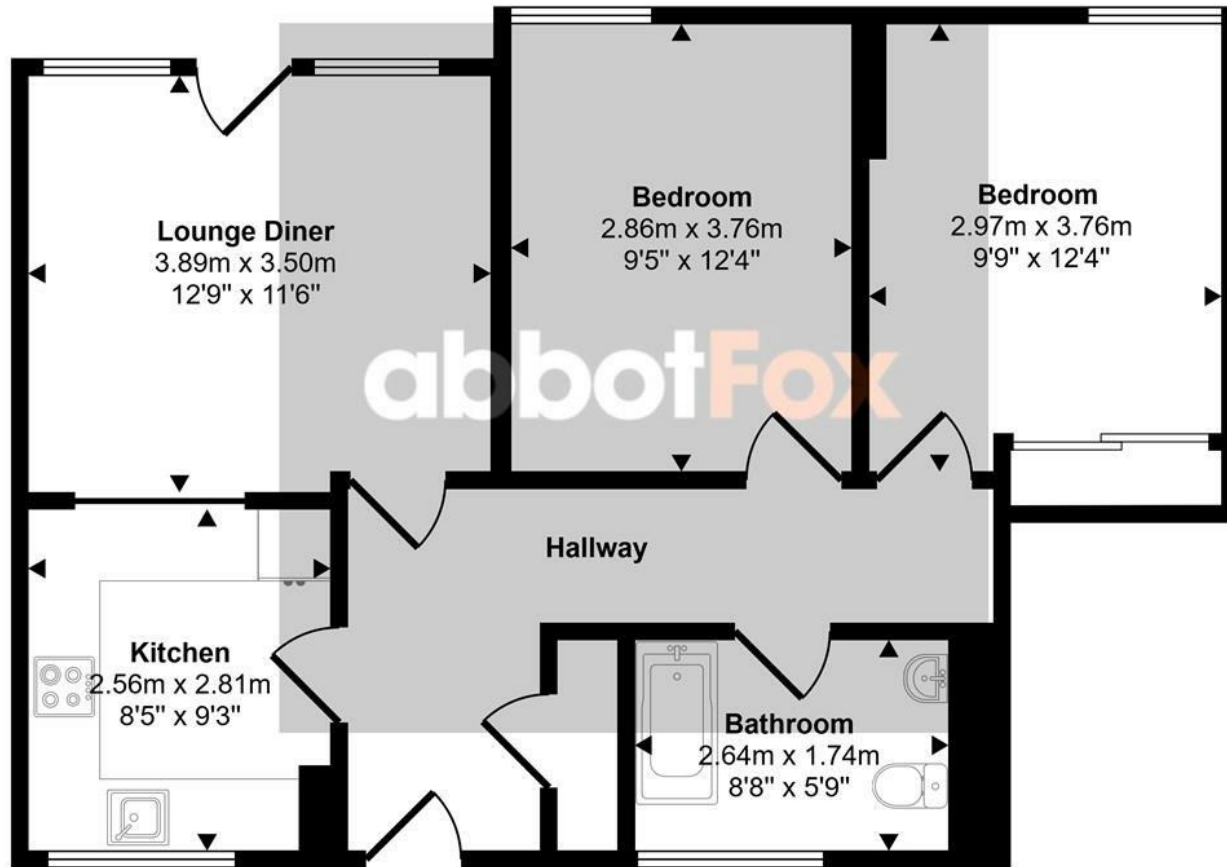




THE HIGHLIGHTS____

- No onward chain
- Stylish apartment
- Two double bedrooms
- Private balcony
- Secure, allocated parking
- Convenient location
- Viewing advised

Approx Gross Internal Area
62 sq m / 671 sq ft



Floorplan

This floorplan is only for illustrative purposes and is not to scale. Measurements of rooms, doors, windows, and any items are approximate and no responsibility is taken for any error, omission or mis-statement. Icons of items such as bathroom suites are representations only and may not look like the real items. Made with Made Snappy 360.

Let's talk

01603 660000

sales@abbotfox.co.uk

@abbotfox

EPC RATING -

Disclaimer – In accordance with the Property Misdescriptions Act, the company abbotFox gives notice that all descriptions, references to condition, necessary permissions for use and other details are given in good faith and believed to be correct, but any purchaser should not rely on them as statements of fact, and must satisfy themselves by inspection or other means, as to their accuracy.