



LAMPTON ROAD, TW3

£1,350 pcm

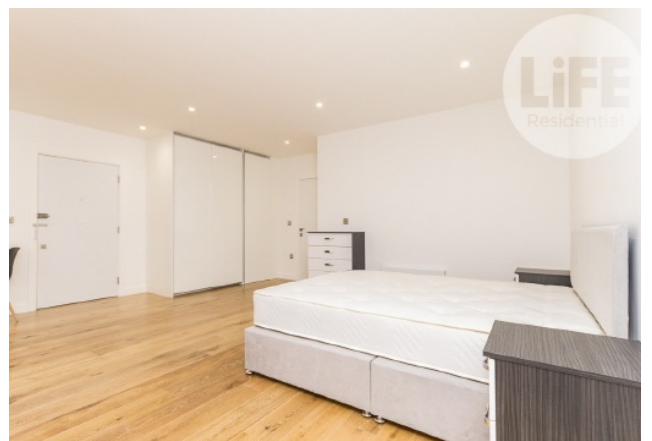
This exceptionally spacious 473 sq/ft third-floor studio apartment features a designer open-plan kitchen and lounge layout. Fully furnished to a modern standard, the property optimises light and space to offer a highly comfortable and sophisticated urban living environment.

- Generous 473 SQFT Layout
- Designer Open-Plan Kitchen
- Third Floor Elevation
- Professional Concierge Service

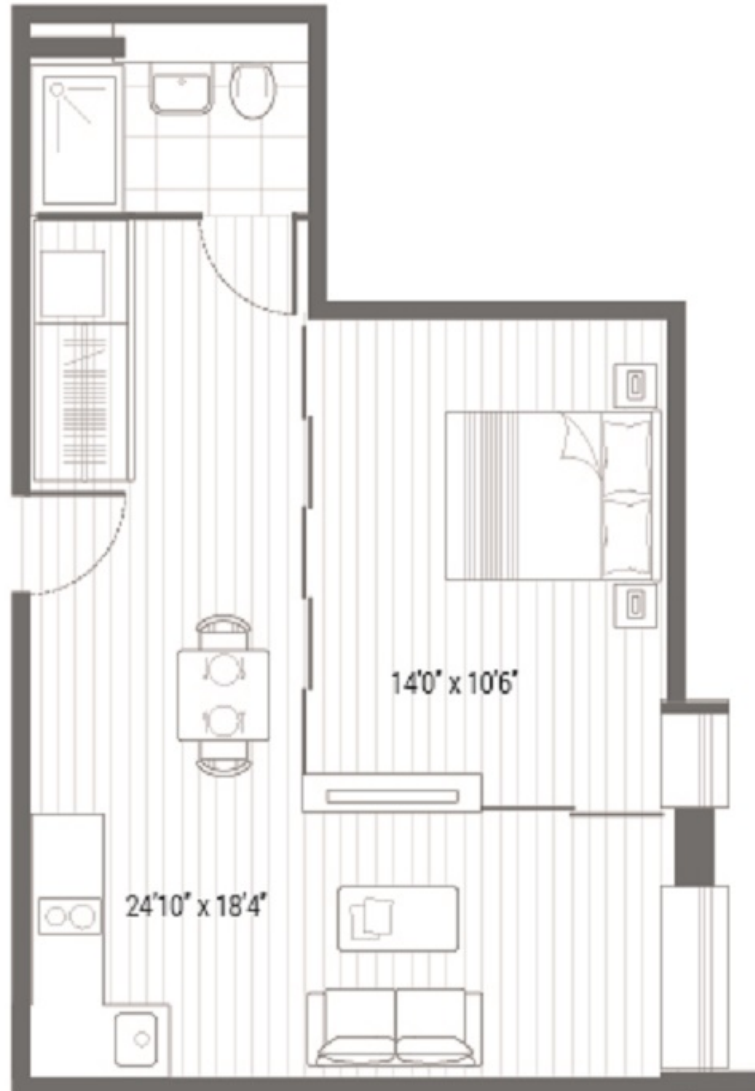


ABOUT THE HOME

Positioned just moments from Hounslow Central Station, this development provides unparalleled access to the Piccadilly Line, making Heathrow Airport just a two-stop journey away. Residents benefit from smooth connections into Central London alongside a dedicated concierge service.







Total area 473 SQ.FT. 43.9 SQ.M.

LiFE RESIDENTIAL

203 Trentham Court, Victoria
Road, London, W3 6BT
Sales: 020 3668 1112
Lettings: 020 3668 1111

Energy Rating: C. We aim to make our particulars both accurate and reliable. However they are not guaranteed; nor do they form part of an offer or contract. If you require clarification on any points then please contact us, especially if you're traveling some distance to view. Please note that appliances and heating systems have not been tested and therefore no warranties can be given as to their good working order.