



**WELL-PRESENTED THREE BEDROOM, TWO BATHROOM TERRACED FAMILY HOME
POSITIONED WITHIN THE SOUGHT AFTER PENN HEIGHTS DEVELOPMENT**

Jordans Road, Mill End, Rickmansworth, Hertfordshire, WD3 8GN

ROBSONS

Jordans Road, Mill End, Rickmansworth,
Hertfordshire, WD3 8GN

**RECEPTION ROOM • KITCHEN • DINING
ROOM • GUEST WC • PRINCIPAL BEDROOM
WITH EN-SUITE • TWO FURTHER BEDROOMS
• FAMILY BATHROOM • REAR GARDEN • TWO
ALLOCATED PARKING SPACES**

Description

A well-presented three-bedroom, two-bathroom terraced family home, ideally positioned within the sought-after Penn Heights development. Offering convenient access to local amenities, reputable schools, and excellent transport links, this property combines comfort with practicality.

The ground floor welcomes you with an entrance hallway featuring a guest WC, leading through to a modern, front-aspect kitchen. To the rear, a spacious lounge area provides an ideal setting for both relaxing and entertaining, flowing seamlessly into a bright and airy dining area that benefits from a new solid roof conversion. French doors open onto the garden, allowing for an abundance of natural light and easy indoor-outdoor living.





On the first floor, there are two well-proportioned bedrooms, with one benefitting from fitted wardrobes, alongside a stylish, newly refurbished family bathroom complete with generous storage. The second floor is dedicated to the principal bedroom, and a contemporary en-suite shower room with two sky lights and under-sink storage.

Externally, the rear garden is mainly laid to lawn with a patio area, perfect for outdoor dining and entertaining. The back gate leads to a picturesque green area that creates a beautiful backdrop to the garden. The property further benefits from two allocated parking spaces immediately in front of the property.

Location

Rickmansworth town centre has a wide range of boutique shops, coffee houses, restaurants and major supermarkets. The Metropolitan and Chiltern line train services connect you to London Baker Street, Marylebone Station and beyond. The area is well served for good quality private and state schools for all ages. Rickmansworth offers a range of activities for the sporting individual.

Additional Information

Tenure: Freehold

Local Authority: Three Rivers District Council

Council Tax Band: D

Energy Efficiency Rating: C

For additional information, please refer to www.robsonswb.com or call us on: 01923 777762.





Approximate Gross Internal Area = 90 sq m / 966 sq ft

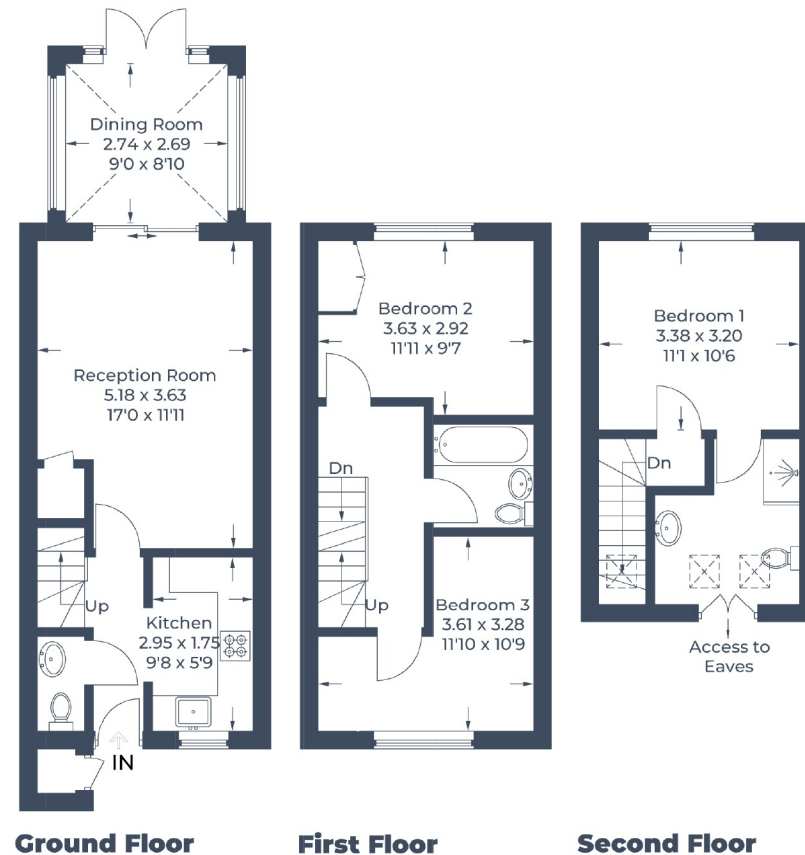


Illustration for identification purposes only,
measurements are approximate, not to scale.
© CJ Property Marketing Produced for Robsons



130 High Street, Rickmansworth WD3 1AB
Tel: 01923 777762 Email: rickmansworth@robsonsweb.com
www.robsonsweb.com



Important notice: Robsons, their clients and any joint agents give notice that 1: They are not authorised to make or give any representations or warranties in relation to the property either here or elsewhere, either on their own behalf or on behalf of their client or otherwise. They assume no responsibility for any statement that may be made in these particulars. These particulars do not form part of any offer or contract and must not be relied upon as statements or representations of fact. 2: Any areas, measurements or distances are approximate. Plot sizes and dimensions are taken from Promap and are approximate. The text, photographs and plans are for guidance only and are not necessarily comprehensive. It should not be assumed that the property has all necessary planning, building regulation or other consents and Robsons have not tested any services, equipment or facilities. Purchasers must satisfy themselves by inspection or otherwise.