

Bellefields Road, Brixton, SW9

2 bedroom maisonette for sale

£600,000

Share of Freehold

Property Details

A striking two double bedroom split-level maisonette with a private roof terrace and its own entrance, set within an attractive Victorian property in the heart of Brixton's sought-after Low Traffic Neighbourhood. Thoughtfully designed to a high standard, this stylish home blends contemporary design with period charm. Stone steps lead to a private raised ground floor entrance, opening into a welcoming hallway. The stairwell ascends gracefully, enhanced by glass balustrades and natural light from multiple landings. The first floor hosts a bright reception with sash windows, high ceilings, and wooden flooring. Glass doors lead into a modern kitchen-diner with colourful tiling and sleek units, enhanced by a stunning glass feature wall. A private roof terrace offers an ideal al-fresco retreat. The top floor comprises two generous double bedrooms with fitted storage and charming views, plus hallway and loft storage. This elegant home offers exceptional light, space, and privacy.

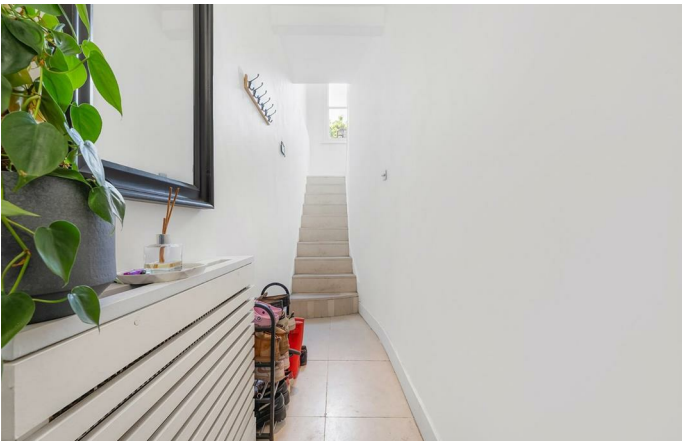
Features

- Two double bedrooms
- Roof terrace
- Victorian maisonette
- Own private entrance
- Stylish split-level flat
- Over 850 square feet
- Sought-after location
- Close to all that vibrant Brixton has to offer
- Victoria line at Brixton tube a four-minute stroll
- Chain-free. Share of freehold.

Council tax band D

EPC rating D (66)

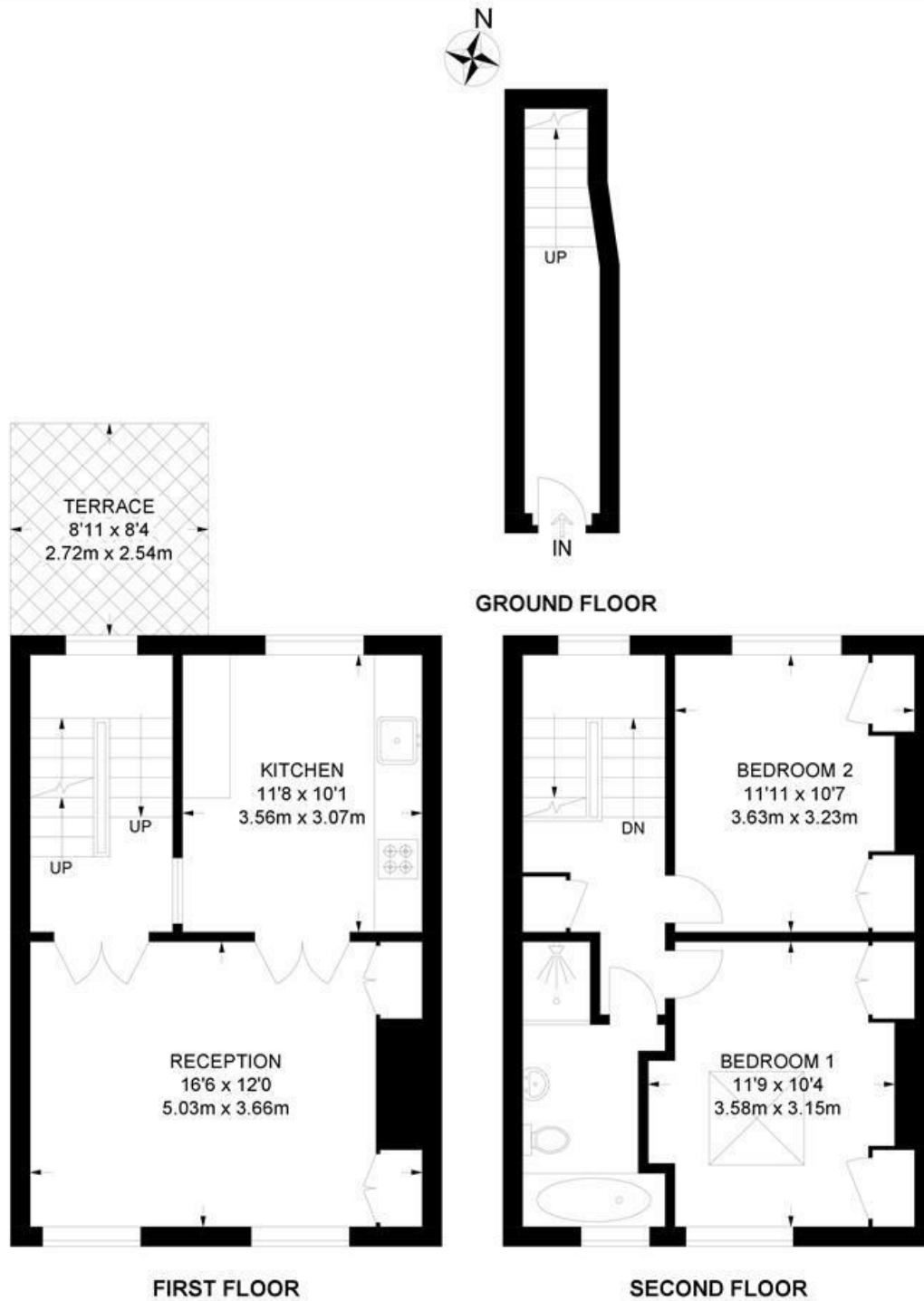




Bellefields Road, Brixton, SW9

Bellefields Road, SW9
2 Bedroom Flat

APPROXIMATE GROSS INTERNAL AREA: **858 SQ FT / 79.7 SQ M**



While we try our very best, floor plans are produced as a guide only and we take no responsibility for the precise accuracy with which any property is represented.

Bellefields Road, Brixton, SW9

