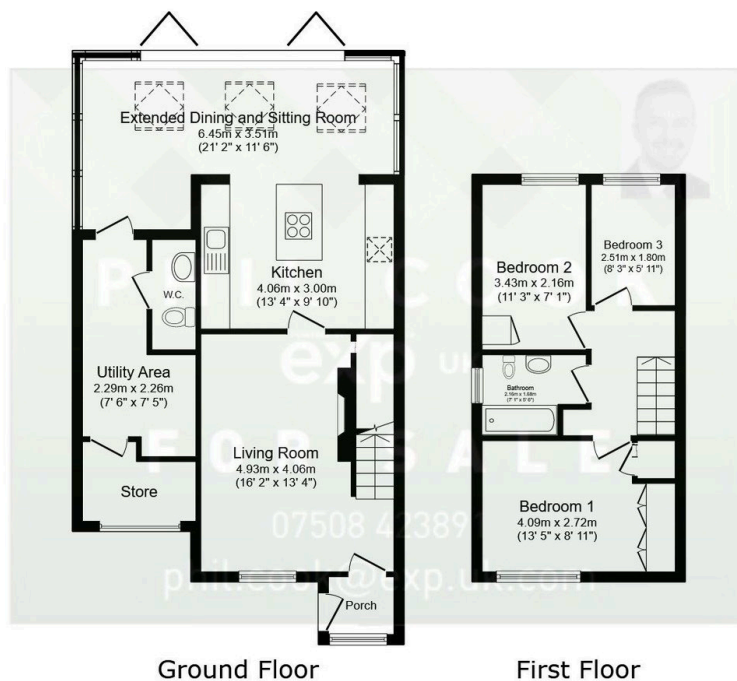


17 Beaulieu Close,
Guide Price £285,000

 3  1  2



- Quote Reference PC0649 Agent - Phil Cook
- A Very Well Presented Three Bedroomed Semi-Detached Family Home
- Popular Marlpool Location
- Cul de Sac Location
- Close to Renowned Local Schools
- Puxton Marsh Nature Reserve to the Rear
- Superb Rear Extension to Give a Large Dining and Sitting Room
- A Must See Property
- Earliest Viewing Advised to Avoid Missing Out
- Hit the 'Request Details' or 'Email Agent' button to secure your viewing now!



Total floor area: 84.2 sq.m. (907 sq.ft.)

This floor plan is for illustrative purposes only. It is not drawn to scale. Any measurements, floor areas (including any total floor area), openings and orientations are approximate. No details are guaranteed, they cannot be relied upon for any purpose and do not form any part of any agreement. No liability is taken for any error, omission or misstatement. A party must rely upon its own inspection(s). Powered by www.Propertybox.io

Quote Reference PC0649, Click CONTACT to book your viewing. Superbly presented three bedroomed extended semi-detached family home with recently re-fitted Kitchen located within the highly sought after location of Marlpool overlooking Puxton Nature Reserve. Situated with easy access to local amenities. Offering canal, river and nature reserve close by, and two parks/play areas on the estate. The property comprises of a Porch entrance, Lounge with feature electric fire and an incredible extended Kitchen/Dining room, Downstairs W.C and utility room to the ground floor. To the first floor there are three good sized bedrooms and a family bathroom.

PHIL COOK



@ phil.cook@exp.uk.com

🌐 philcook.exp.uk.com

☎ 07508 423 891

Garden to the rear with decking and lawn areas. Driveway to the front offering parking for multiple cars. Very well located cul-de-sac property with a rarely available standard of fit and finish. Hit the 'Request Details' or 'Email Agent' button to secure your viewing now!