



Park Gardens, KT2

£475,000

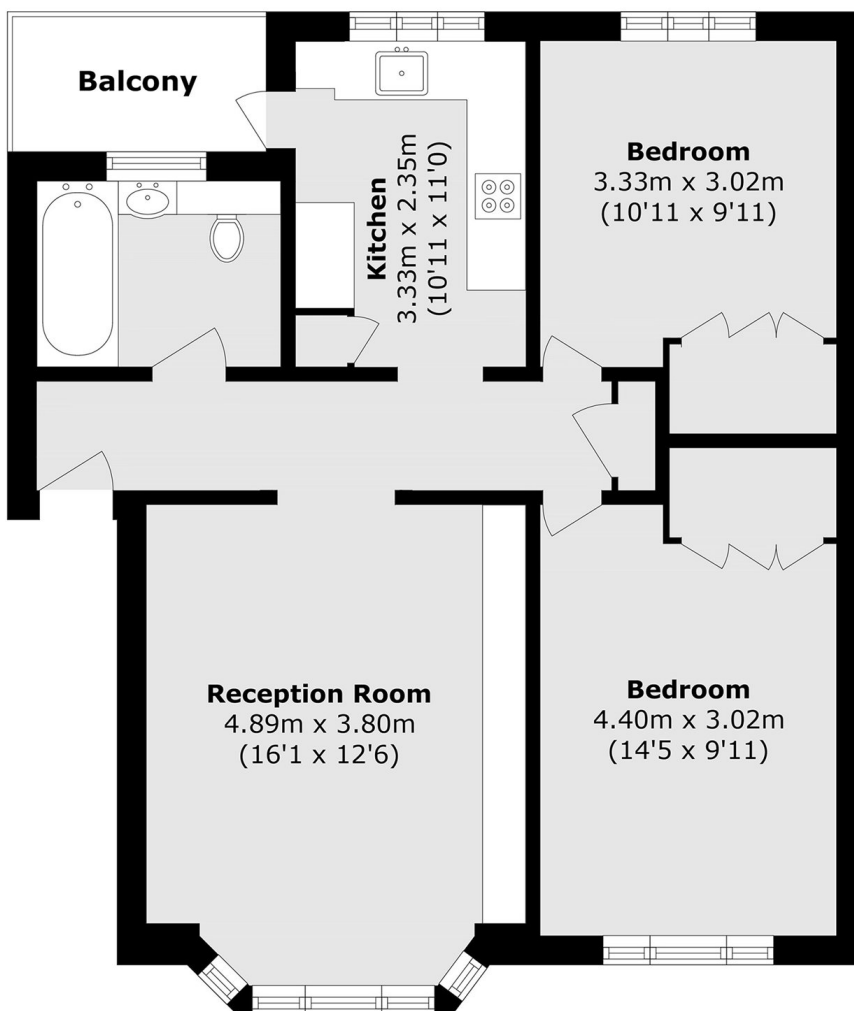
A spacious two double bedroom apartment in beautiful condition throughout. As well as the spacious bedrooms, there is a generous living room, large bathroom and a kitchen with plenty of space for a dining table to enjoy breakfast and dinner overlooking the grounds.

Park Gardens is a quiet, cul de sac that backs onto Richmond Park. Ideally located to access the very best of the area, less than a mile to the River Thames, Ham Parade, local shops, the vibrant Kingston town centre and both Norbiton and Kingston's mainline station.

Features

- Two Double Bedrooms
- Beautiful Condition
- Share of Freehold
- Close To Richmond Park
- Residents Parking
- Great Location

Park Gardens, Kingston Upon Thames, KT2



Total area (approx.): 66.9 sq. m (720.1sq. ft)
Balcony area (approx.): 2.9 sq. m (31.2 sq. ft)