



23 Londinium Tower, 87 Mansell Street, Aldgate

OIEO £450,000 Leasehold



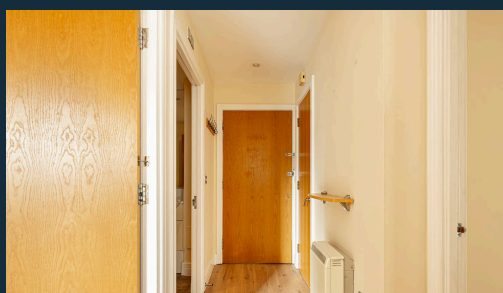
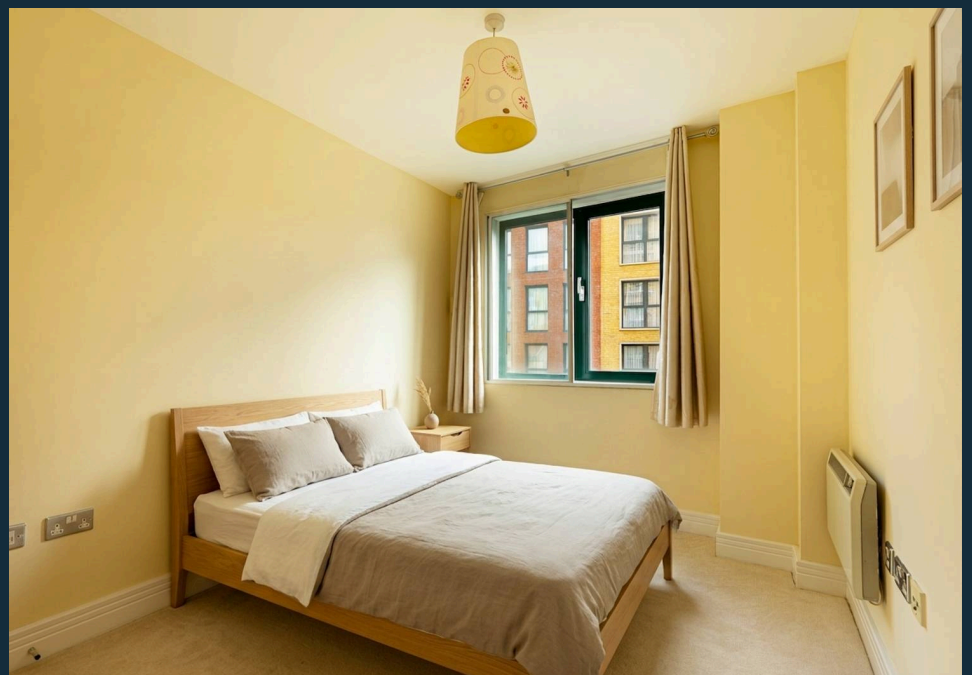
haboodle

Set within Londinium Tower on Mansell Street, this recently refurbished two-bedroom apartment, offered CHAIN FREE, sits right in the heart of E1, moments from Aldgate Station, Aldgate East Station, Tower Hill Station and Tower Gateway DLR Station. It's the kind of location where everything is on your doorstep, whether that's a quick commute into the City or evenings around the Tower of London and the surrounding bars and restaurants. What really sets this one apart, though, is the inclusion of an allocated underground parking space – something genuinely rare for this part of London.

The apartment is on the second floor and has been thoughtfully updated throughout, making it move-in ready. The layout works well, with a bright open-plan living space and a semi-separate kitchen that keeps things practical without losing the sociable feel. The kitchen is fully fitted with integrated appliances including an oven, induction hob, extractor, microwave, dishwasher and fridge-freezer. Both bedrooms are well-proportioned doubles with brand-new carpets, while the hallway and



- › Two Double Bedroom Apartment
- › NO ONWARD CHAIN
- › Recently Refurbished Throughout
- › Open-Plan Living With Semi-Separate Kitchen
- › Fully Integrated Kitchen Appliances
- › Allocated Underground Parking Space (Rare For E1) & Bike Storage Available
- › Large Communal Roof Terrace With City Views
- › Concierge Service & Secure Entry
- › Approximately 971 Years remaining on the leasehold



Londinium Tower, 87 Mansell Street, Aldgate - E1

Approximate Gross Internal Area = 55.1 sq m / 593.1 sq ft

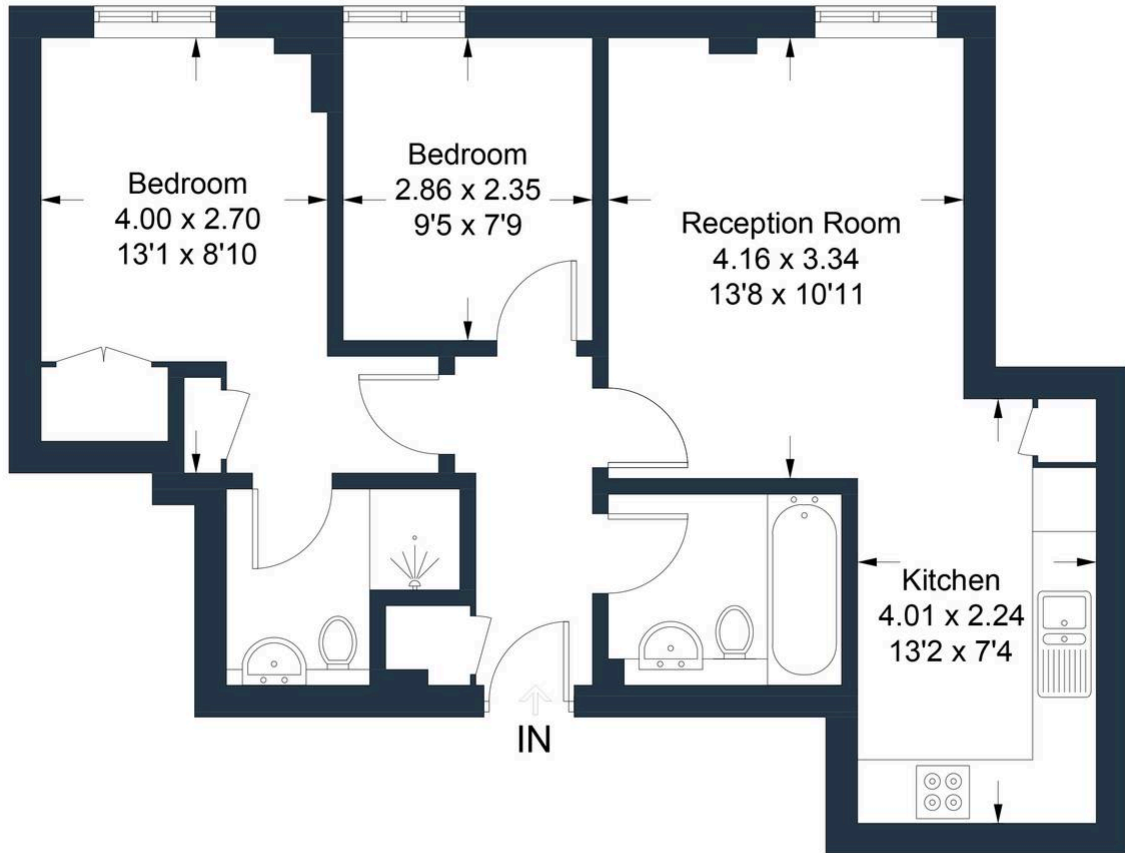


Illustration for identification purposes only, measurements are approximate, not to scale. Produced by Haboodle Estate Agents (ID1292104)



haboodle