



Aldersgate Street, EC1A

£3,250 Per calendar month

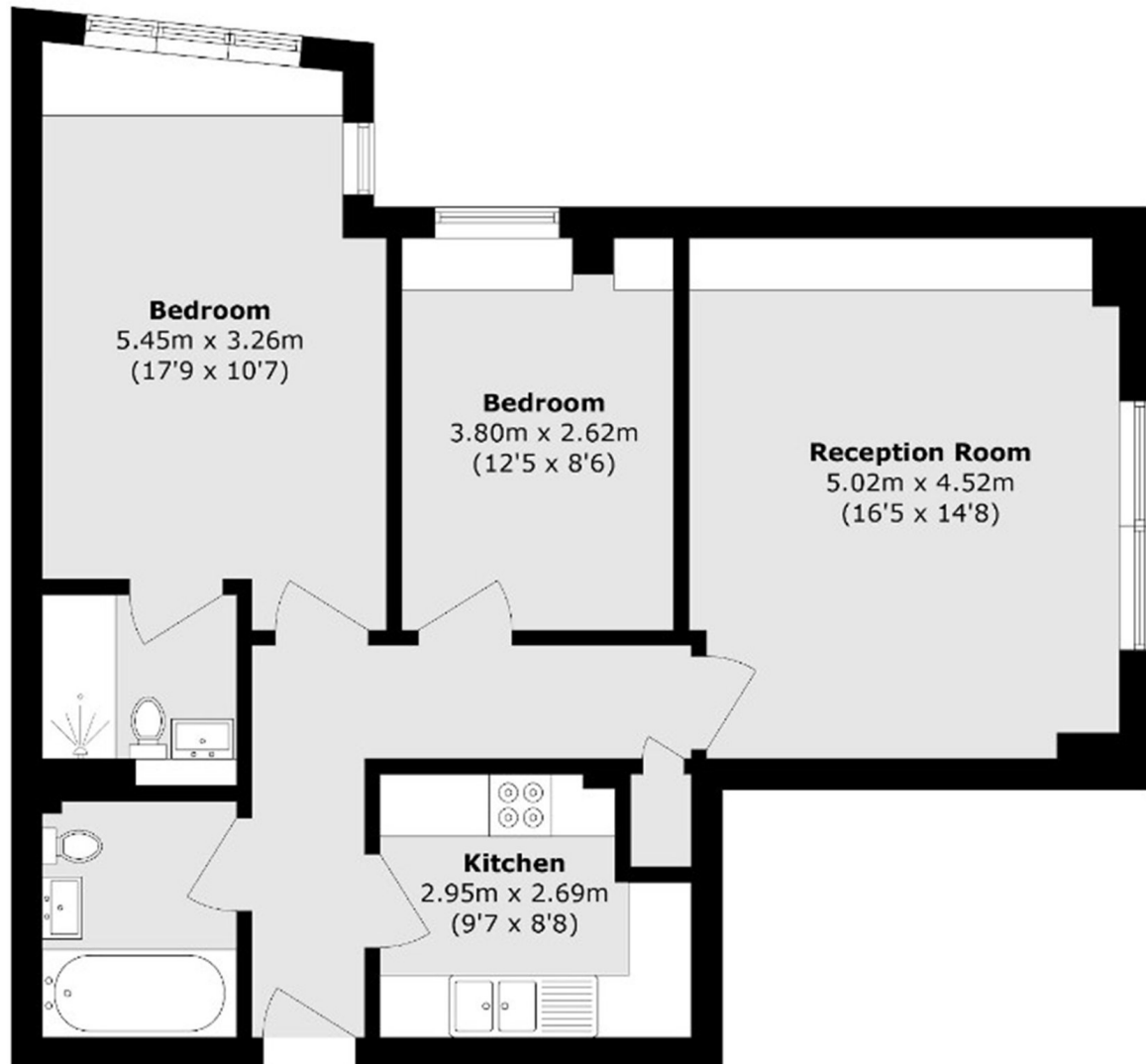
A well-presented two double bedroom apartment offering two bathrooms, a separate fully fitted kitchen and a generously sized living room. The property features wooden-style flooring, integrated appliances and access to a communal roof terrace within the development.

Cathedral Lodge is situated less than quarter of a mile from Barbican Station and is just over half a mile from Old Street underground station giving you links to The City. Whitecross Streets food market, restaurants and bars are located down the road.

Features

- Two Double Bedrooms
- Two Bathrooms
- Concierge
- Wooden Floors
- Modern Kitchen
- Communal Roof Terrace

Aldersgate Street,
London, EC1A



Total area (approx.): 74.2 sq. m (798.7 sq. ft)