

## Cutter Lane, SE10

£475,000

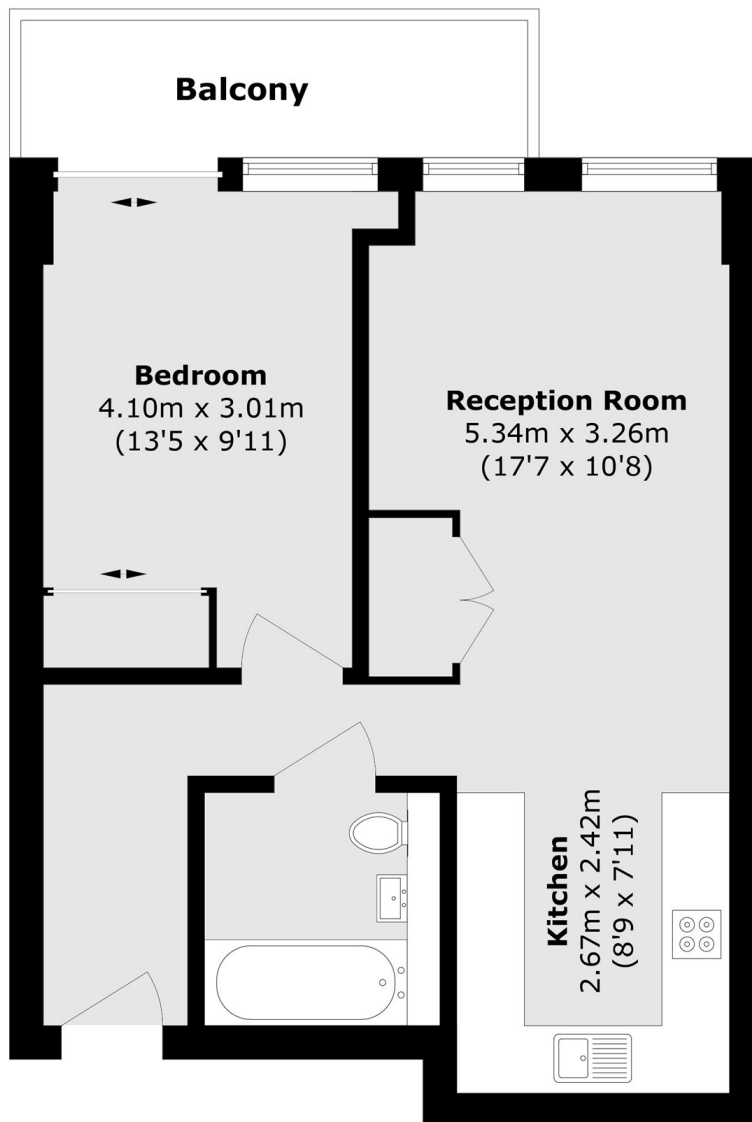
A beautifully presented one double bedroom modern flat with direct river views through and further benefits from a private balcony over looking the river.

Cutter Lane is perfectly located for access into the O2 and all the shops and restaurants on offer. You are also next to the Emirates Light Air and North Greenwich underground.

### Features

- Ideal First Purchase
- River Views
- Private Balcony
- Sought After Location
- No Work Required
- Moments From The Jubilee Line

Cutter Lane,  
London, SE10



Total area (approx.): 46.5 sq. m (500.5 sq. ft)

Balcony area (approx.): 5.4 sq. m (58.1 sq. ft)