



Lily Way, Palmers Green, London, N13  
£510,000 Leasehold

**Anthony Webb**  
ESTATE AGENTS

# Lily Way, Palmers Green, London, N13

A well presented, modern and superbly located three bedroom maisonette, set within a newly built development, offering 1138 sq ft of bright and airy living space across the ground and first floors.

Perfectly located within a short distance from Bounds Green and Arnos Grove Underground Stations (Piccadilly Line) and Bowes Park Rail Station (mainline station to Moorgate) as well as bus routes to Wood Green and Southgate. Green Lanes shops, cafes and restaurants are also a short walk away.

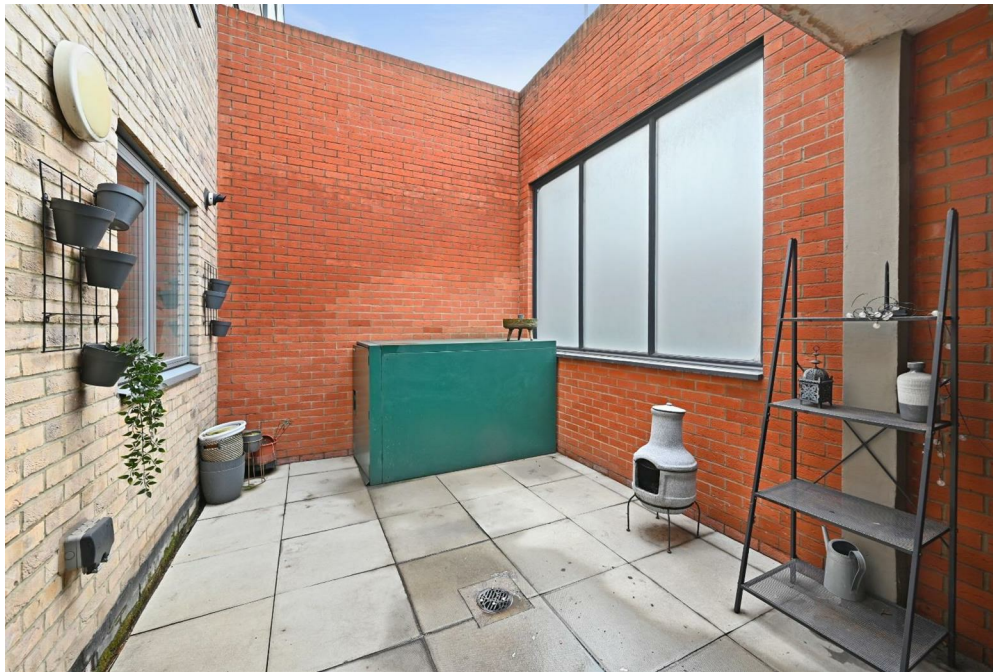
Own front door • Hallway with large storage cupboard • Spacious open plan kitchen/dining room/reception area • Glass doors leading to private paved terrace • Modern fitted kitchen • Ground floor w.c • First floor landing with storage cupboard • Principle bedroom with fitted en-suite shower room and doors leading to a private balcony • Second double bedroom with doors leading to private balcony • Single bedroom • Modern bath/shower room • Designated driveway.

Remaining lease-115 years  
Ground rent-N/A  
Service charge-£1836 p.a  
Enfield council tax band E

- Three bedrooms
- Two storey maisonette
- Open plan living/dining space
- Modern fitted kitchen
- Two bath/shower rooms + guest w.c
- Two balconies + garden terrace
- Triple glazing/gas central heating
- Own designated driveway



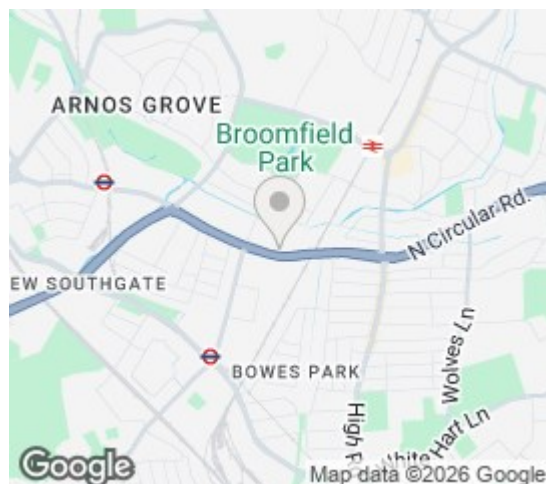




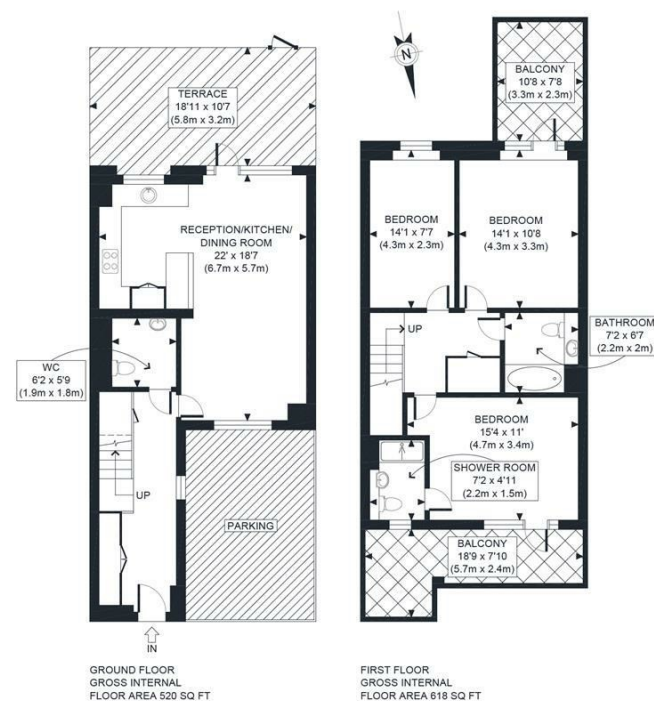


# Lily Way Palmers Green London N13 4EF

Tenure: Leasehold  
Gross Internal Area: 1138.00 sq ft



Energy Efficiency Rating		Current	Potential
Very energy efficient - lower running costs			
(92 plus) A			
(81-91) B		85	86
(69-80) C			
(55-68) D			
(39-54) E			
(17-38) F			
(1-20) G			
Not energy efficient - higher running costs			
England & Wales		EU Directive 2002/91/EC	
Environmental Impact (CO <sub>2</sub> ) Rating		Current	Potential
Very environmentally friendly - lower CO <sub>2</sub> emissions			
(92 plus) A			
(81-91) B			
(69-80) C			
(55-68) D			
(39-54) E			
(17-38) F			
(1-20) G			
Not environmentally friendly - higher CO <sub>2</sub> emissions			
England & Wales		EU Directive 2002/91/EC	



APPROX. GROSS INTERNAL FLOOR AREA 1138 SQ FT / 106 SQM	Lily Way
Disclaimer: Floor plan measurements are approximate and are for illustrative purposes only. While we do not doubt the floor plan accuracy and completeness, you or your advisors should conduct a careful, independent investigation of the property in respect of monetary valuation.	date: 13/02/26 photoplan

Property particulars as supplied by Anthony Webb Estate Agents are set out as a general outline in accordance with the Property Misdescriptions Act (1991) only for the guidance of intending purchasers of lessees, and do not constitute any part of an offer or contract. Details are given without any responsibility, and any intending purchasers, lessees or third parties should not rely on them as inspection or otherwise as to the correctness of each of them. We have not carried out a structural survey and the services, appliances and specific fittings have not been tested. All photographs, measurements, floor plans and distances referred to are given as a guide only and should not be relied upon for the purchase of carpets or any other fixtures statements or representations of fact, but must satisfy themselves by or of fittings, gardens, roof terraces, balconies and communal gardens as well as tenure and lease details cannot have their accuracy guaranteed for intending purchasers. Lease details, service ground rent (where applicable) are given as a guide only and should be checked and confirmed by your solicitor prior to exchange of contracts. no person in the employment of Anthony Webb has any authority to make any representation or warranty whatever in relation to this property.

348 Green Lanes, Palmers Green, London N13 5TJ  
020 8882 7888  
palmersgreen@anthonywebb.co.uk  
anthonywebb.co.uk

**Anthony Webb**  
ESTATE AGENTS