



## 100 GREENINGS COURT

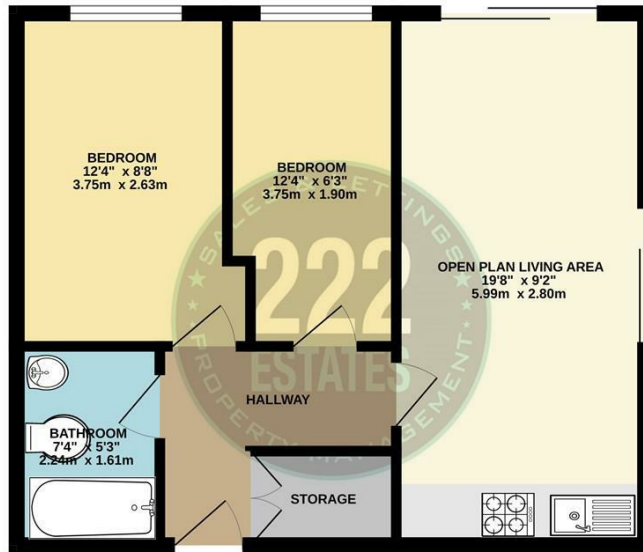
WARRINGTON, WA2 7GH

£115,000  
LEASEHOLD

Welcome to Greenings Court, a modern two-bedroom apartment located in the desirable Carrington Park Development, just a stone's throw from Warrington Town Centre. This third-floor residence offers a blend of contemporary living and convenience, making it an ideal choice for both first-time buyers and those looking to downsize.



GROUND FLOOR  
456 sq.ft. (42.3 sq.m.) approx.



2 BEDROOM APARTMENT  
 TOTAL FLOOR AREA - 456 sq.ft. (42.3 sq.m.) approx.  
Whilst every attempt has been made to ensure the accuracy of the floorplan contained here, measurements of doors, windows, rooms and any other details are approximate and no responsibility is taken for any error, omission or mis-statement. This plan is for illustrative purposes only and should be used as such by any prospective purchaser. The services, systems and appliances shown have not been tested and no guarantee as to their operability or efficiency can be given.  
Made with Mergin 12/2023



| Energy Efficiency Rating                    |                            |           |
|---|----------------------------|-----------|
|   | Current                    | Potential |
| Very energy efficient - lower running costs |                            |           |
| (92 plus) <b>A</b>                          |                            |           |
| (81-91) <b>B</b>                            |                            |           |
| (69-80) <b>C</b>                            |                            |           |
| (55-68) <b>D</b>                            |                            |           |
| (39-54) <b>E</b>                            |                            |           |
| (21-38) <b>F</b>                            |                            |           |
| (1-20) <b>G</b>                             |                            |           |
| Not energy efficient - higher running costs |                            |           |
| <b>England &amp; Wales</b>                  | EU Directive<br>2002/91/EC |           |

Agents Note: Whilst every care has been taken to prepare these particulars, they are for guidance purposes only. All measurements are approximate and are for general guidance purposes only and whilst every care has been taken to ensure their accuracy, they should not be relied upon and potential buyers/tenants are advised to recheck the measurements

222 Estates Lettings and Sales  
 222 Orford Lane Orford  
 Warrington  
 Cheshire  
 WA2 7BB

01925 499599  
 info@222estates.co.uk  
 www.222estates.co.uk

