

Jubilee Walk, WC1X

£5,000 Per calendar month

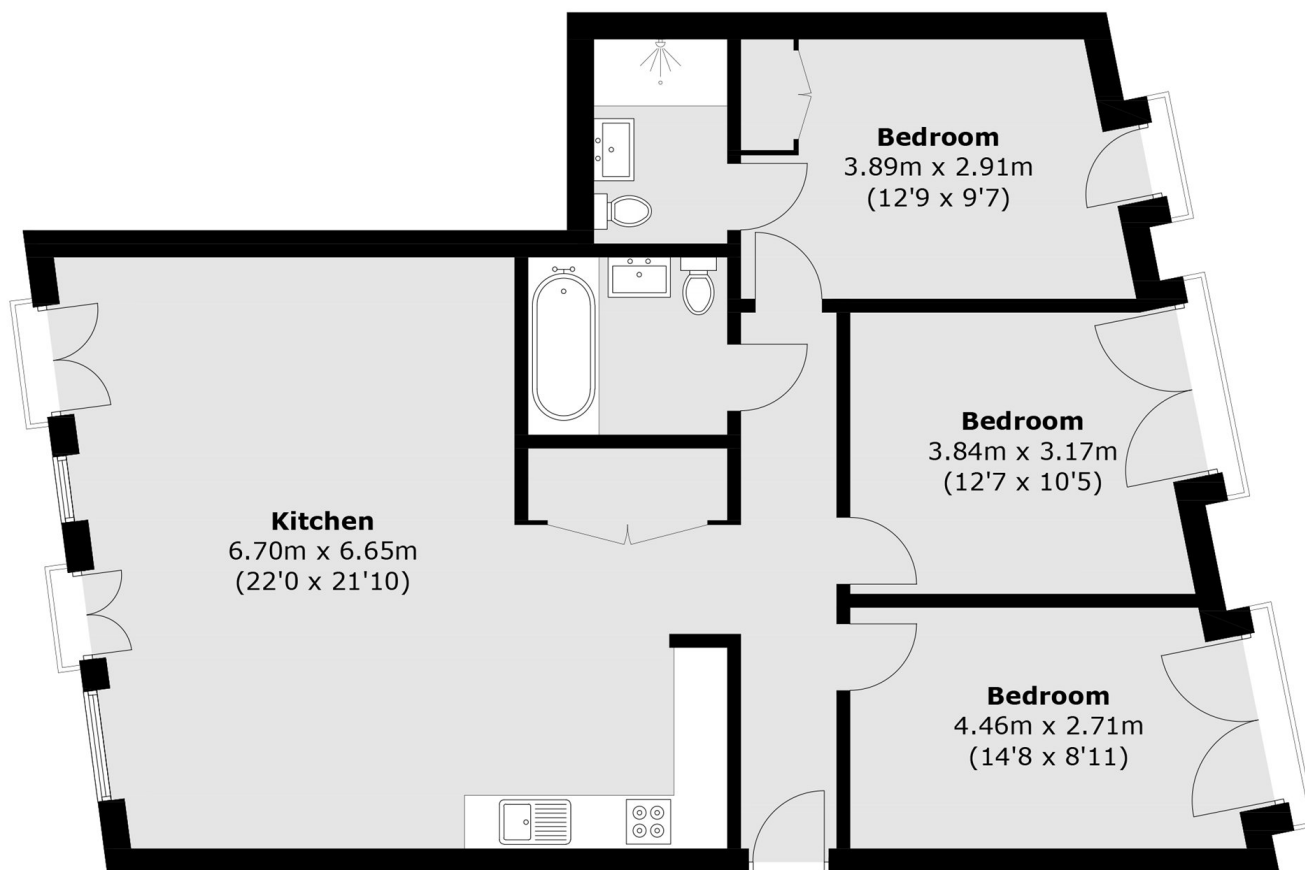
A stunning three double bedroom apartment with five Juliet balconies, modern bathrooms, open plan kitchen and comfort cooling. Residents' facilities include a cinema, rooftop gardens, gym and a function room. Car Parking Available.

The property is well connected for the amenities of King's Cross, Farringdon and Russell Square and it is uniquely placed for easy access into the City and the West End.

Features

- Three Double Bedrooms
- Two Bathrooms
- 1062 sqft / 98.7 sqm
- 24hrs Concierge
- Residents Lounge & Terraces
- Gym with Pool and Spa

Jubilee Walk, LONDON, WC1X



Fifth Floor

Total area (approx.): 98.7 sq. m (1,062.4 sq. ft)