



Flat A, 27 Fawcett Street | Earls Court | London | SW10 9EY

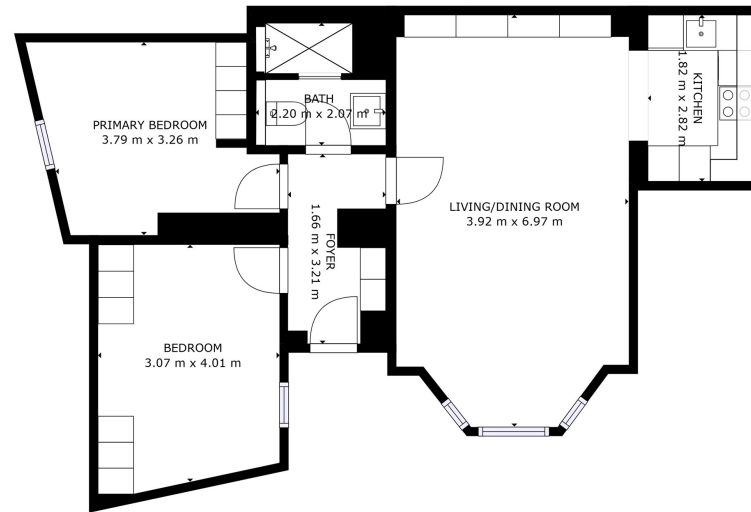
£3,150 Per Month

SÉJOUR

Flat A, 27 Fawcett Street
| Earls Court
London | SW10 9EY

Positioned on the lower ground floor, this stunning two-bedroom apartment combines elegant interiors with a thoughtfully arranged layout to create a stylish and comfortable home.

- Recently renovated two-bedroom apartment
- Stylish open-plan living and dining area
- Two well-proportioned bedrooms
- Lower ground floor position
- Contemporary fitted kitchen
- Bespoke built-in shelving and storage



FLOOR 1

GROSS INTERNAL AREA
FLOOR: 1.68 m²
TOTAL: 68 m²
SIZES AND DIMENSIONS ARE APPROXIMATE, ACTUAL MAY VARY.



Energy Efficiency Rating		Current	Potential
Very energy efficient - lower running costs			
(92 plus)	A		
(81-91)	B		
(69-80)	C		78
(55-68)	D	66	
(39-54)	E		
(21-38)	F		
(1-20)	G		
Not energy efficient - higher running costs			
England & Wales		EU Directive 2002/91/EC	

Council Tax Band F
EPC Rating D

10 Cromwell Pl
South Kensington
London
SW7 2JN
020 3865 0611
lettings@cityrelay.com