

Location:

Perryn Road is in a great location for the green spaces of Acton Park, the amenities of Churchfield Road and the road and conveniently beside Acton Main Line for the Elizabeth Line .

Key points:

- Two bedrooms
- Private rear garden - 62ft +
- 742 sq. ft / 69 sq.m
- Off-street parking and Private garage
- Long lease
- Quite tree-lined road in Acton, W3

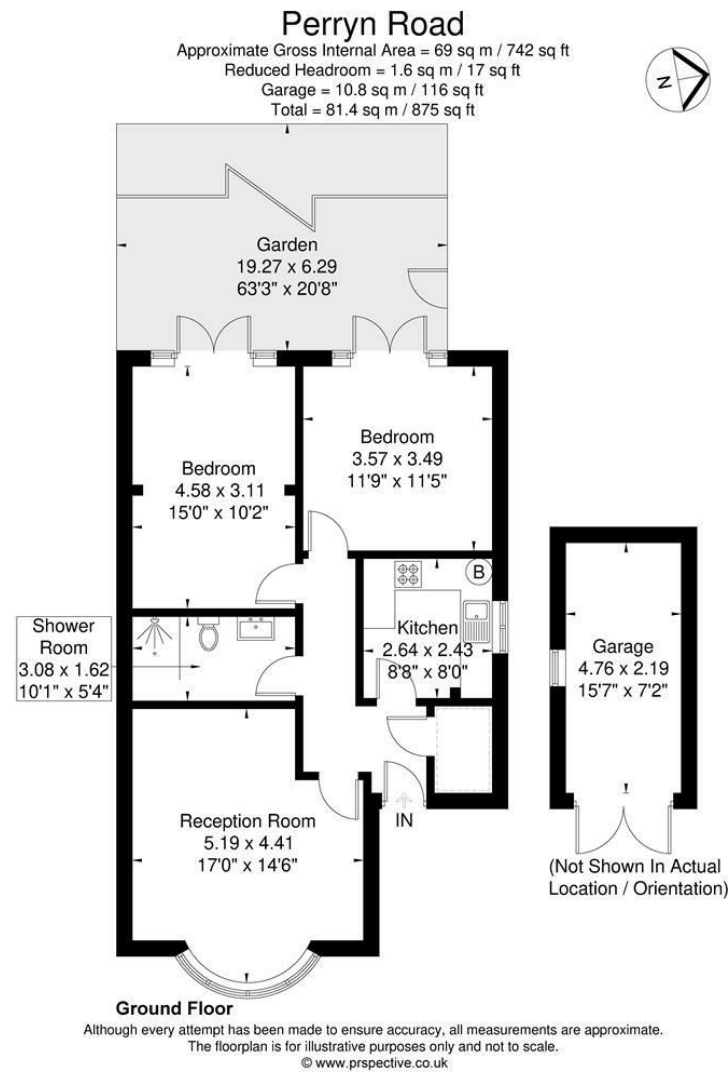
Do Better:

Acton
sales@astonrowe.co.uk

57-59 Churchfield Road,
Acton, London, W3 6AY

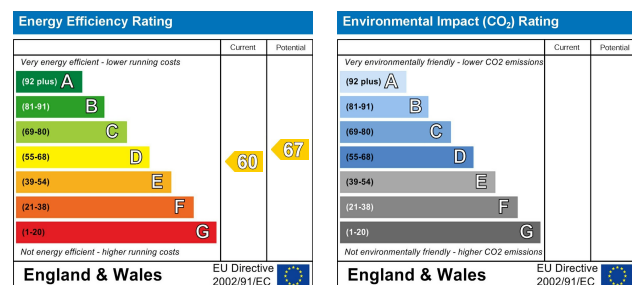
020 8992 3600

Aston Rowe



Offers In Excess Of £550,000

Perryn Road, London W3 7LT



- 1 Reception Rooms
- 2 Bedrooms
- 1 Bathrooms

The current owner says:

The property is in a fantastic location for the local shops, schools, parks and transport links.

A fantastic opportunity to acquire a spacious two-bedroom ground floor garden flat, enviably positioned on one of Acton's most prestigious and sought-after roads.

This well-proportioned home offers two generous double bedrooms, a bright and inviting front reception room ideal for both relaxing and entertaining, a separate fitted kitchen, and a well-appointed family bathroom. The standout feature is the impressive 62ft private rear garden — a wonderful outdoor retreat with ample space for dining, gardening, or future landscaping potential. A further benefit includes a private garage, adding both convenience and long-term value.

Perryn Road is a quiet, tree-lined street set within this prime West London location. Acton Park is moments from your doorstep, while the vibrant cafés, independent boutiques and restaurants of Churchfield Road are just a short stroll away. Fitness enthusiasts will appreciate the nearby David Lloyd Clubs, and commuters benefit from excellent connectivity with the Elizabeth Line close by and Acton Central (London Overground) approximately five minutes' walk away.



What's better:

A fantastic opportunity to acquire a spacious two-bedroom ground floor garden flat, enviably positioned on one of Acton's most prestigious and sought-after roads.

